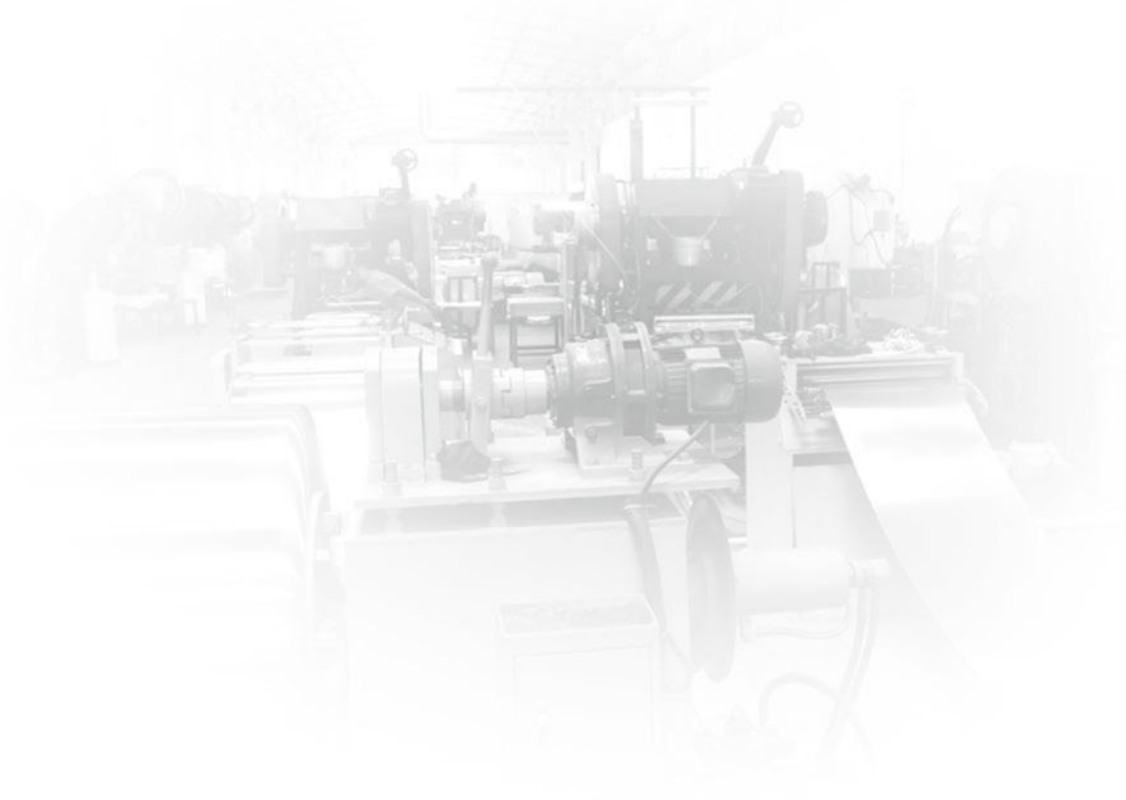




## Products Platform 生产设备

生产技术是对一个企业实力的认证，只有拥有先进的技术力量才会让企业更加壮大。在拥有先进的生产设备的同时，具有不断探索，研发创新的积极性，那么企业也就在不断的向前发展。所以技术改变企业的未来，技术也支撑企业的未来。

The production technology is the strength of an enterprise certification, with advanced technology will make enterprise stronger. With advanced production equipment at the same time, with the continuous exploration, positive innovation, the enterprise is in the continuous development of the. So the technology is changing the future of enterprises, technology is also supporting the future of enterprises.



Products Platform  
生产设备

先进的技术设备  
自动化的生产  
既提高了生产效率，  
也推动了企业的发展。

Advanced technology and equipment,  
automated production,  
improves the production efficiency,  
but also promoted the  
development of enterprises.



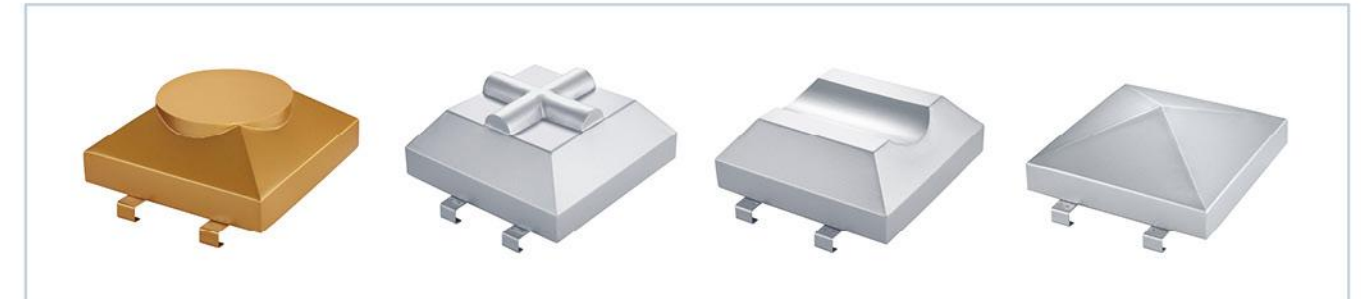


Single Panel of Aluminum Series  
铝单板系列

产品表面颜色可选本厂色号，或来样调色，或可选国际标准色号 RAL 颜色。

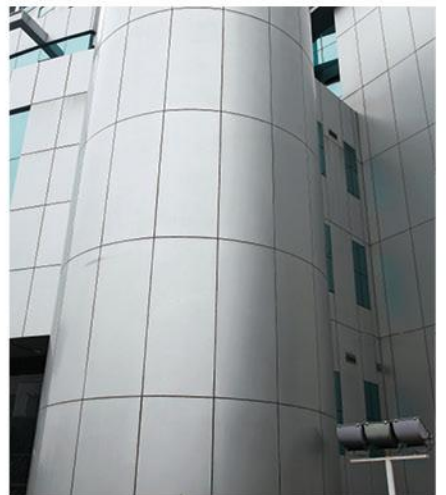
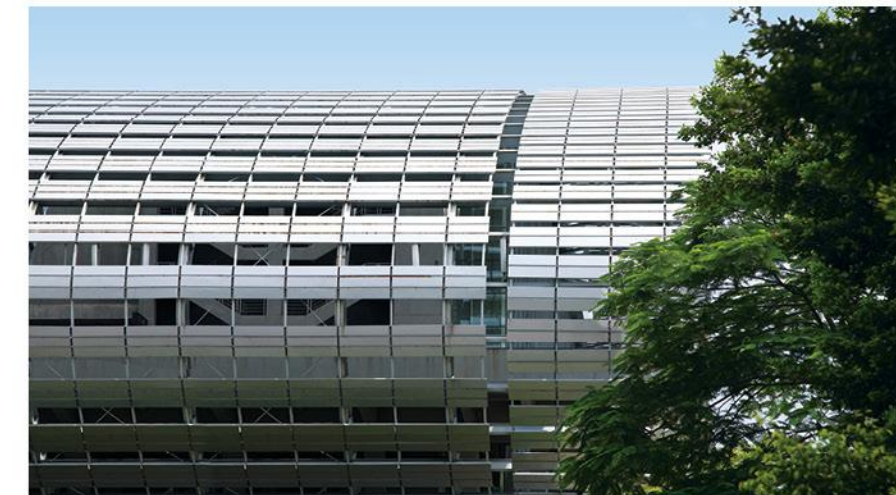
The color number of our factory, RAL international standard color number and the color of the samples are available for the color of product surface.

### 铝单板造型展示 Aluminum Veneer Model Show



铝单板幕墙表面一般经过铬化等前处理后，再采用氟碳喷涂处理。氟碳涂层具有卓越的抗腐蚀性和耐候性，能抗酸雨、盐雾和各种空气污染物，耐冷热性能极好，能抵御强烈紫外线的照射，长期保持不褪色、不粉化，使用寿命长。

Having been chromized firstly, then processed with fluorocarbon spray coating. Fluorine carbon coating has outstanding characteristics of corrosion resistance and weathering resistance, resisting acid rain, salt fog and various kinds of air contaminants. Besides, it has good performance of thermal and cold endurance, meanwhile, it not only can resist strong ultraviolet ray, but also keeping unfading and chalking with long life-time application.





**Outdoor Aluminum  
Wall Panel**

户外幕墙板



**特点:**

户外幕墙采用优质高强度铝合金板材，主要由面板、加强筋和角码组成。角码可直接由面板折弯、冲压成型，也可在面板的折边上铆装角码成型。加强筋与板面后的电焊螺钉联接，使之成为一个牢固的整体，极大增强了铝单板幕墙的强度与韧性，保证了长期使用中的平整度及抗震能力。

**Features:**

Its structure of which is made up of front-plate, reinforced rib, and angle, which is processed by high-intensity aluminum alloy material. The front-plate can be directly bent and stamped to the shape of angle, meanwhile, it is to be made by riveting on the front-plate flanging. The reinforced rib is jointed by the electrical welding bolt at the back of plate, so as to form the whole structure. Therefore, greatly reinforces the characters of intensity and strengthen, guaranteeing evenness and shock resistance ability.

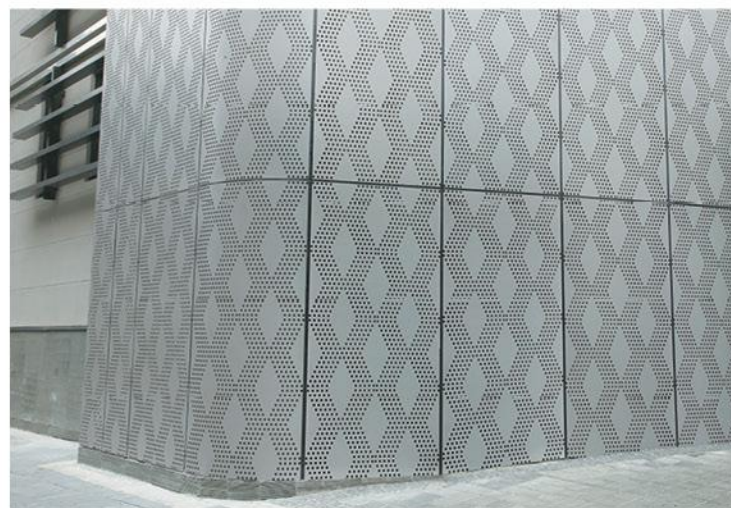
**适用范围:**

建筑幕墙、室外装饰、广告标志牌、仪器外壳、人行天桥、地铁站、海运工具。

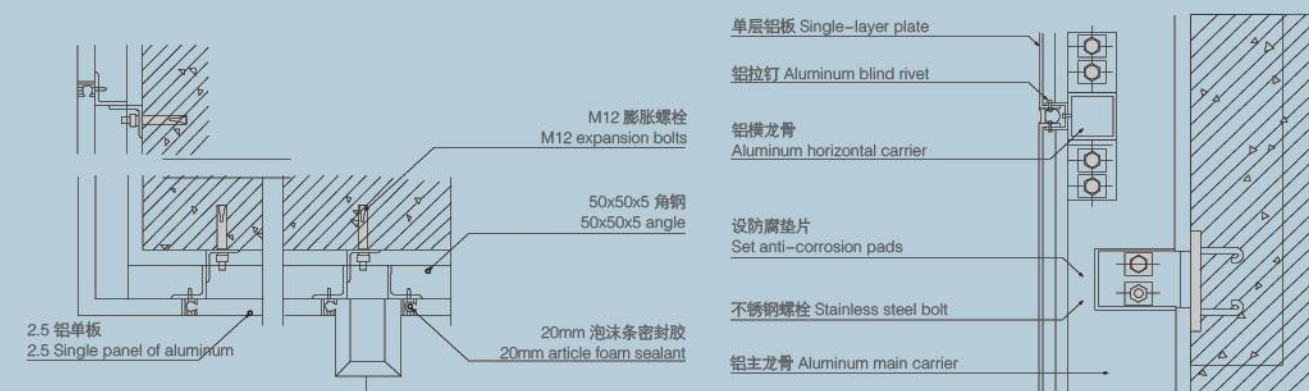
**Scope of application:**

Building walls, outdoor decoration, advertising signs, equipment enclosures, pedestrian bridges, underground, sea tools.

**Outdoor Aluminum Wall Panel**  
户外幕墙板



幕墙墙面转角大样图  
General Graphic of Curtain Wall Corner



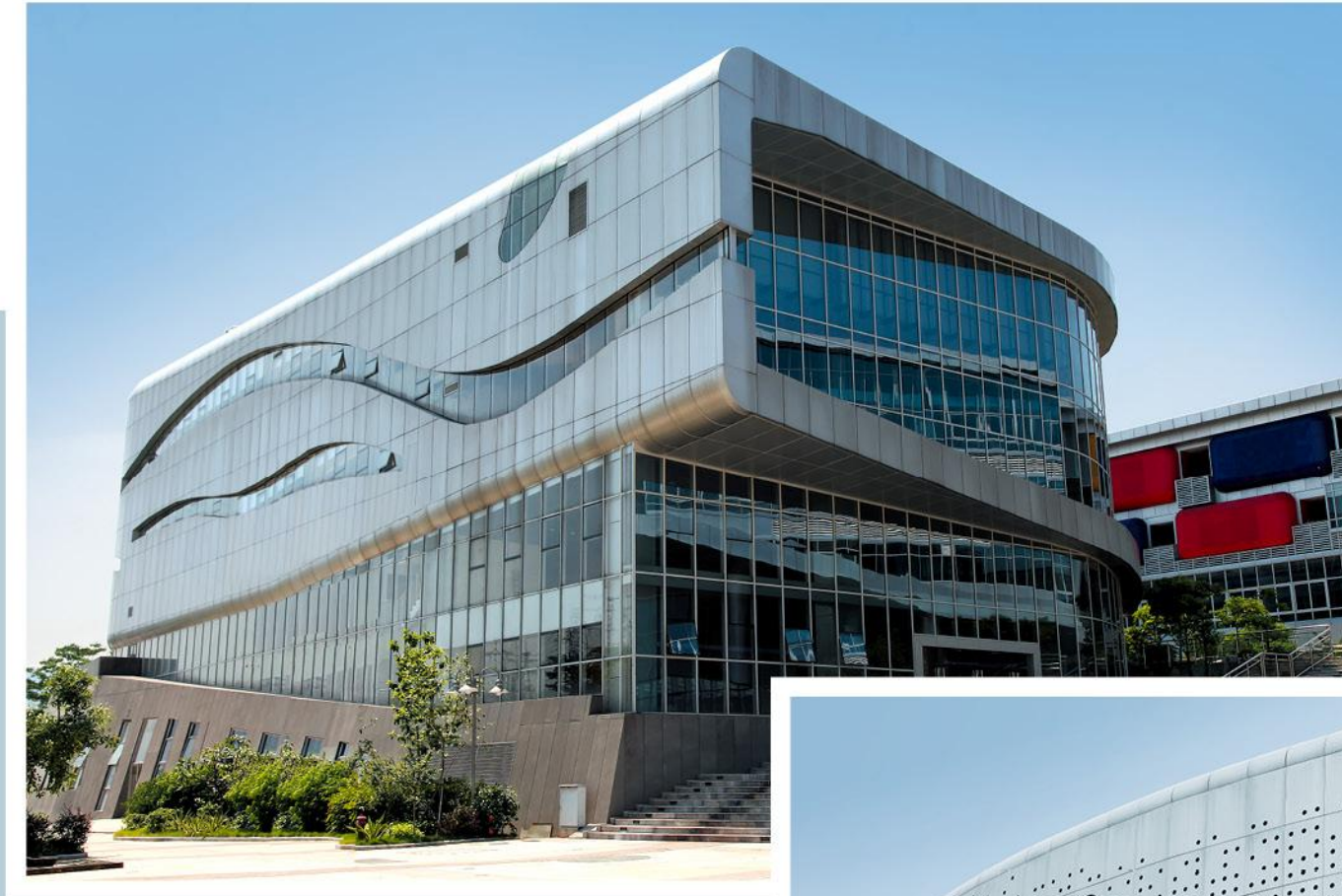
Outdoor Aluminum  
Wall Panel


户外幕墙板



Outdoor Aluminum  
Wall Panel

户外幕墙板





**Indoor Aluminum  
Wall Panel**  
室内幕墙板



**特点:**

室内幕墙采用高强度的优质 AA 级铝合金材料精加工而成，产品经络化前处理后，再采用氟碳喷涂处理，设计掺入现代、时尚等创新元素，让建筑更具现代感。

**Features:**

Indoor aluminum wall panel is taken high-intensity and superb AA grade aluminum alloy material as its original material, having been chromized, then to use fluorine-carbon spray coating to process. It will definitely show its modern and latest element to its design aspect, making its to have more modernized ideas.

**适用范围:**

梁柱、隔板包饰、大堂门面、屋顶平面、室内隔墙、车船内饰及大幅度吊顶等。

**Scope of application:**

Beams, partitions package decoration, lobby facade, flat roof, interior walls, ceiling and other travel and big interior.



# Indoor Aluminum Wall Panel

## 室内幕墙板



### 特点:

室内幕墙采用高强度的优质 AA 级铝合金材料精加工而成，产品经络化前处理后，再采用氟碳喷涂处理，设计掺入现代、时尚等创新元素，让建筑更具现代感。

### Features:

Indoor aluminum wall panel is taken high-intensity and superb AA grade aluminum alloy material as its original material, having been chromized, then to use fluorine-carbon spray coating to process. It will definitely show its modern and latest element to its design aspect, making its to have more modernized ideas.

### 适用范围:

梁柱、隔板包饰、大堂门面、屋顶平面、室内隔墙、车船内饰及大幅度吊顶等。

### Scope of application:

Beams, partitions package decoration, lobby facade, flat roof, interior walls, ceiling and other travel and big interior.



### 铝板包柱安装实例

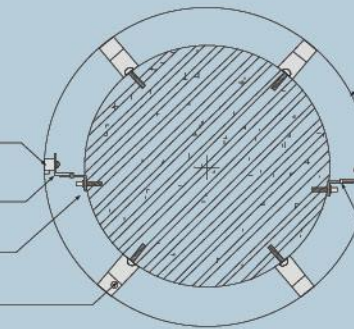
#### Installation Illustration of Aluminum Plate Decoration for Pillars

耐候密封胶 Weather-resistant sealant

自攻螺丝 Self-tapping screw

膨胀螺栓 Expansion bolt

铝方管 Aluminum square tube



铝单板 Single aluminum panel

泡沫条垫衬 Foam bar cushion

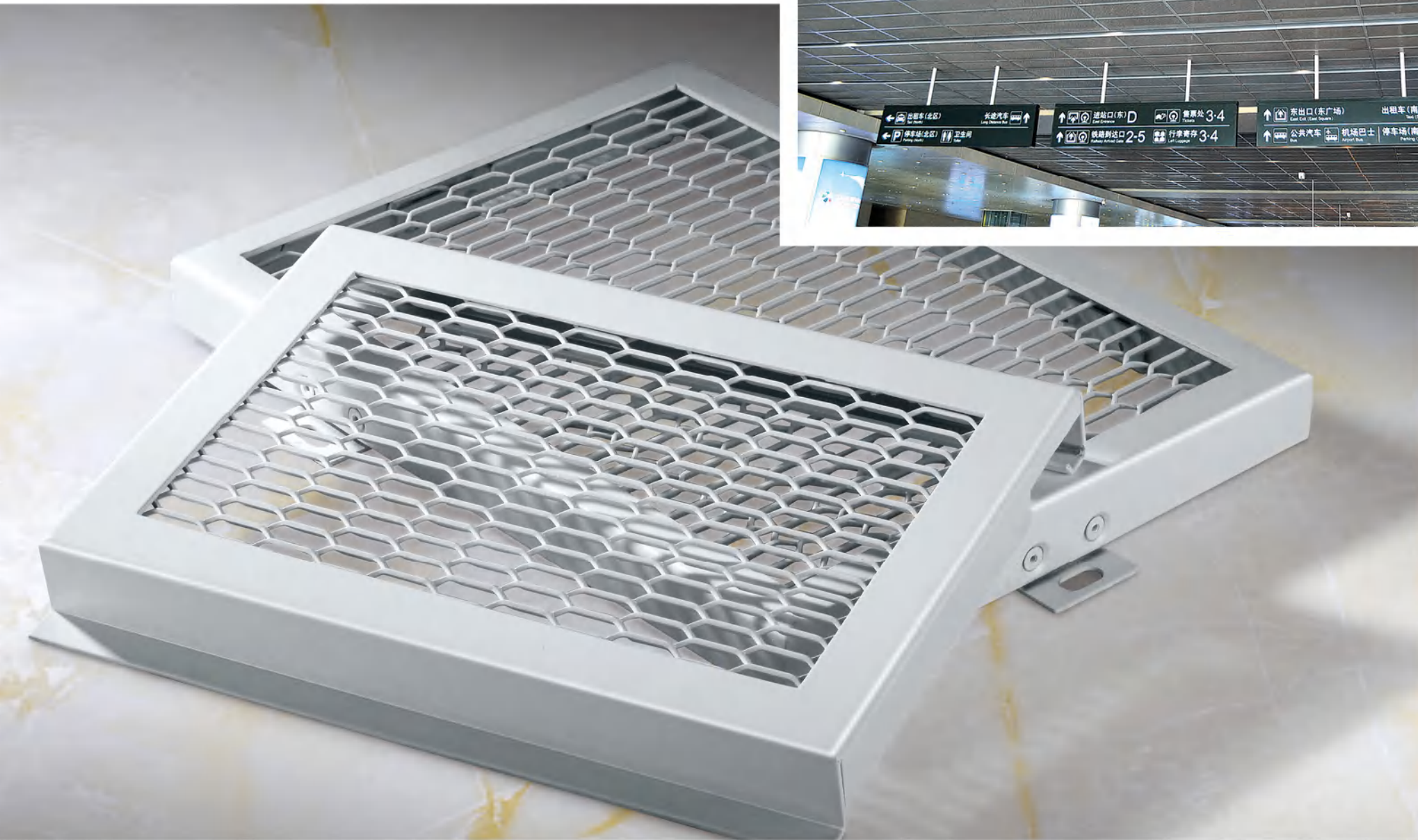
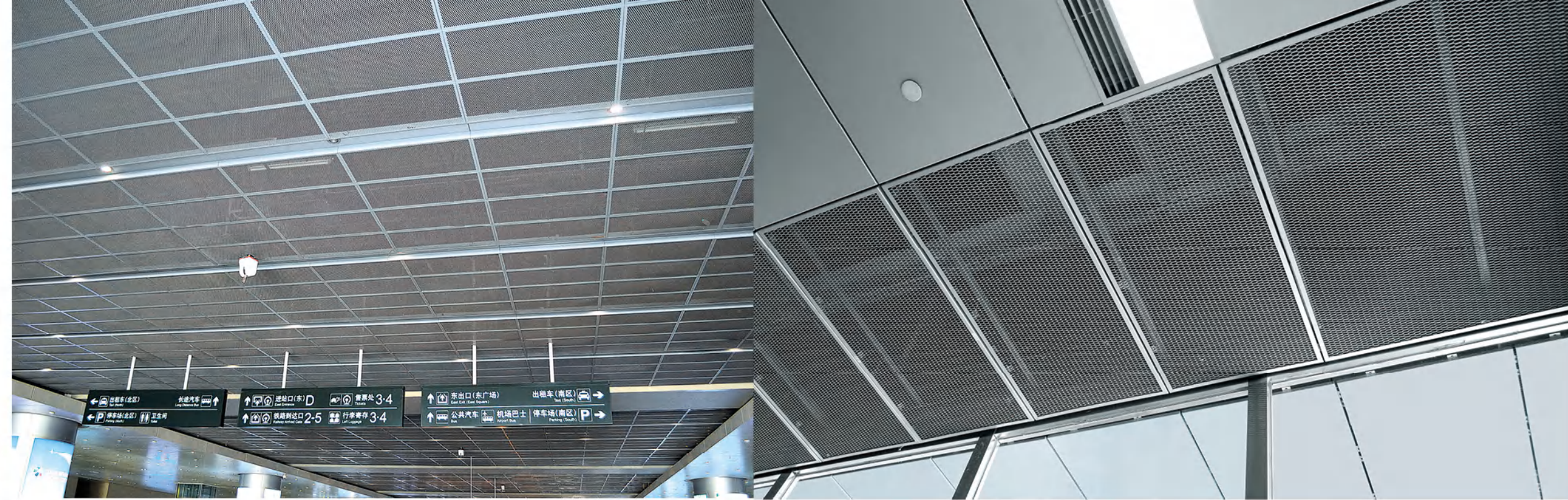
挂耳交错安装 Side notching interlaced installation

角钢调平后焊接并做防锈处理  
The leveling angle after welding and antirust processing

**Indoor Aluminum  
Wall Panel**  
室内幕墙板



**Net Ceiling**  
拉网天花



**特点:**

拉网铝单板是以高等级铝合金为主要材料,按工程现场设计的尺寸、形状和构造形式经过数控折弯等技术成型,确保板材在加工后能平整不变形,并在其表面氟碳喷涂的基础上制作间距比例大小一致网格的一种高档金属装饰材料,使用时不需要再进行裁剪,可直接安装。

**Features:**

Net single aluminum plate with high grade aluminum alloy as the main material, according to the engineering design field size, shape and structure form through fluorine-carbon bending technology molding, to ensure that the plate can be smooth without deformation after machining, a high-grade decorative metal materials and the production of spacing ratio uniform mesh based on the surface fluorocarbon spray., do not need to be cut when in use, can be directly installed.

**适用范围:**

机场、地铁、轻轨、车站、展馆、体育馆、图书馆、行政办公大楼,商业楼等。

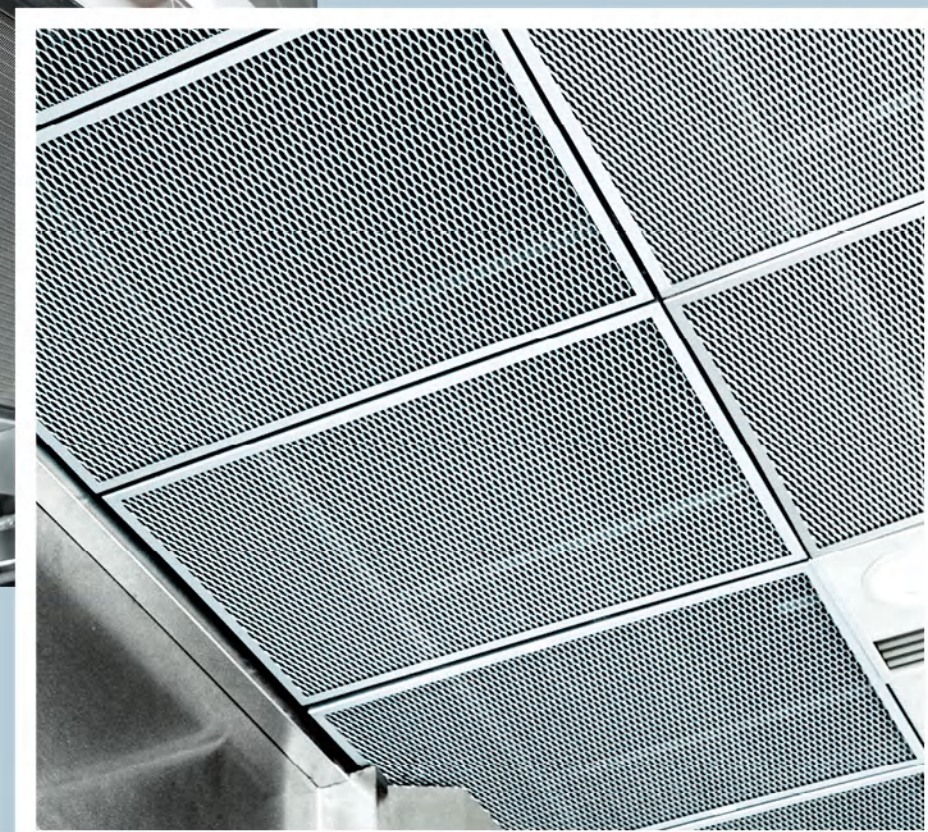
**Scope of application:**

Airport, subway, light rail, the station, exhibition hall, gymnasium, library, office buildings, commercial buildings and so.



**Net Ceiling**

拉网天花





**Corrugated Ceiling**  
瓦楞板

**适用范围:**

被广泛应用于影剧院、音乐厅、展厅、体育馆等大型现代公共建筑中。  
Scope of application:  
Be extensively appropriate for public buildings of large scale, such as movie theater, music hall, exhibition hall and gym.

**特点:**

瓦楞板表层为 1.0-1.2mm 的铝板，背面为瓦楞状的钢板或铝质材料，采用环氧树脂粘剂粘合，最大强度上保证铝板之间的粘结强度并均匀复合。

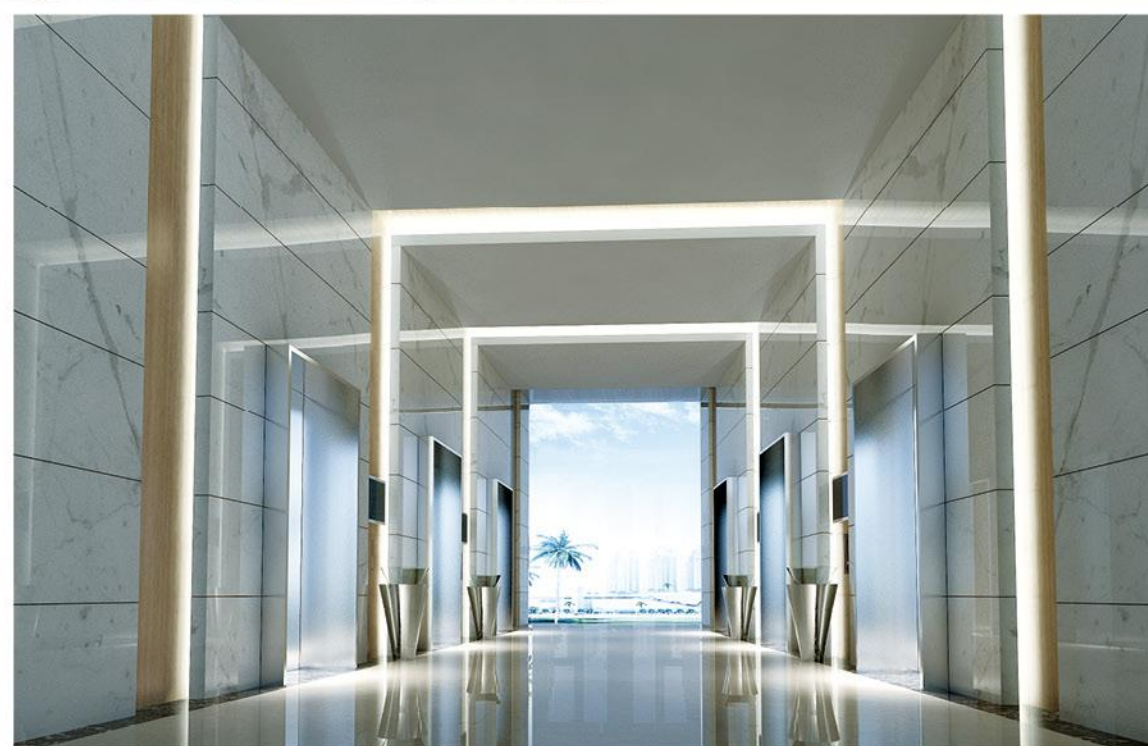
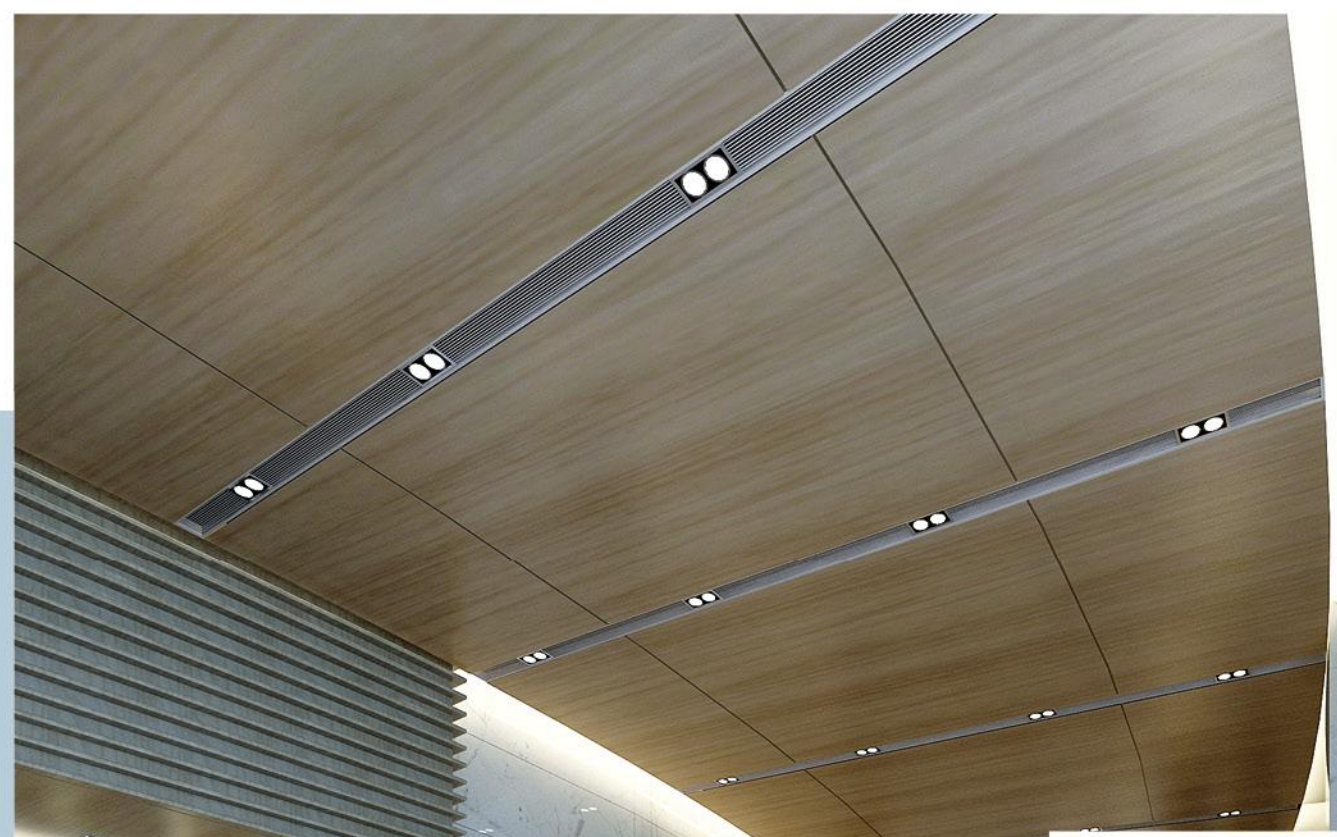
铝表面涂层：采用氟碳树脂涂料，能够有效抵抗酸雨、空气污染及紫外光的侵蚀，具有使用时间长、吸附能力强、光泽度好、耐老化、不变色等特点。

表面平整，可以作为大幅装饰面板而不变形，表面涂层均匀一致，易清洗；色彩丰富，隔音、隔热性能好，具绝佳的防火性能，达到防火 A 级。

Features:  
It's surface covered a layer of aluminum with 1.0 to 1.2mm thickness, and a steel panel or aluminum panel of corrugated shape on back, bonded by epoxy resin binder, guarantee the adhesive strength and uniformly compound.

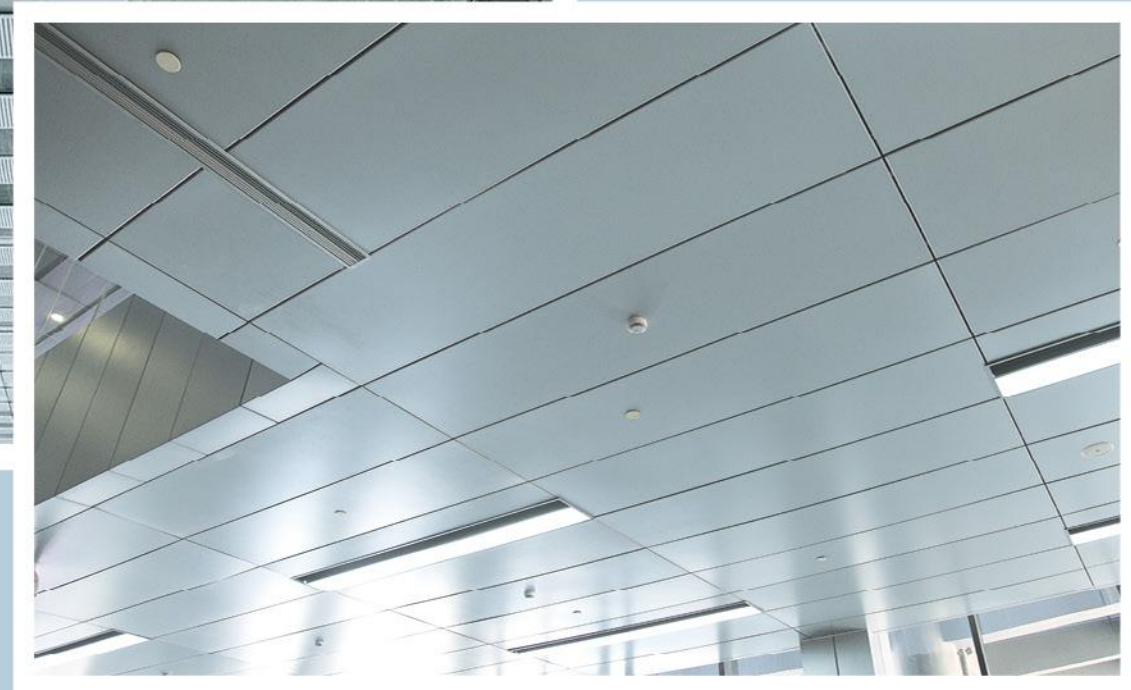
Coating of the aluminum surface: use fluorine carbon coatings to resist acid-rain, air pollutions and UV ray effectively, and durable, strong adsorbability, nice glossiness, non-discoloring.

Own flat surface, able to be applied for big piece of decorating board and won't be out of shape, easy to clean, variety of colors, excellent performances of sound proofing and heat resistance, reach A class of fire-proof.



Corrugated  
Ceiling

瓦楞板



## Honeycomb Panel Series

### 蜂窝板系列

General Honeycomb Panel  
常规蜂窝板



#### 特点:

蜂窝板是由两块较薄的面板，牢固地粘结在一层较厚的蜂窝状芯材两面而制成的板材，亦称蜂窝夹层结构。抗震性能好，具有良好的附着力和耐候性，能长时间保持建筑物外墙颜色鲜艳。

高平整度板面：两层铝板夹以高强度铝蜂窝芯材的板型结构，形成了这种平整度极高且变形极为微小的理想板材。

光滑的板面：铝板光滑的表面处理，良好的板面平整度和最小的接缝间隔使整个吊顶区域呈现极为宽阔平整的外观效果。

简易的挂钩式安装：合成有安装型材的板材使安装、移动或更换工作极为简单快捷。板材搭接部分边缘，只沿长度方向作两边安装。

高质量板材：该系统可为设计提供多种造型与功能，如吸音板、条状板型、方块板型和异形板型均可依客户需求量身订制。结合多种颜色和表面处理技术的运用，充分保证了产品的优良品质和性能。

#### Features:

Honeycomb board is made of two thin panels, firmly bonded in a thick layer of honeycomb core material made of both sides of the plate, also known as honeycomb sandwich structure. Have nice resistance to shock, excellent adhesive force and resistance to weather, keep outer wall of building bright and colorful for a long time.

High planeness of surface: the structure of two layers of aluminum with honeycomb core material create the perfect panel.

Smooth surface: panels with excellent flatness and minimal interval make the whole ceiling system show a nice performance.

Simple hook installation: the special panel make installation, migration and replacement more convenient. The edge of panel installed along the length.

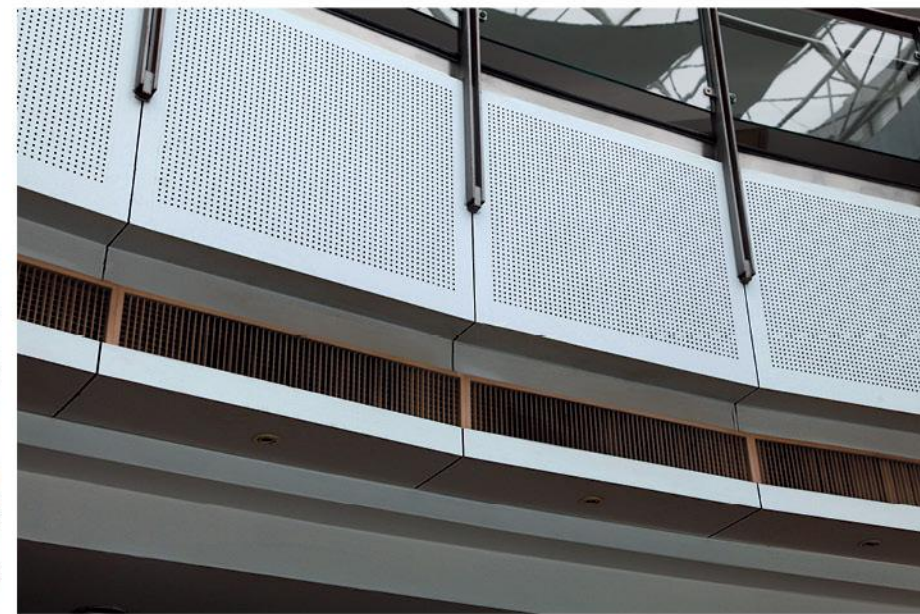
High-quality material: it could be designed to be many kinds of shape and function, panels as sound-absorbing ceiling, strip ceiling, square ceiling and non-standardized ceiling could be custom-made according to customers. Variety of colors and surface treatments guarantee the quality and function of products.

#### 适用范围:

广泛应用于高档 KTV、酒吧、会所、行政楼房，超市等各种公共场所。

#### Scope of application:

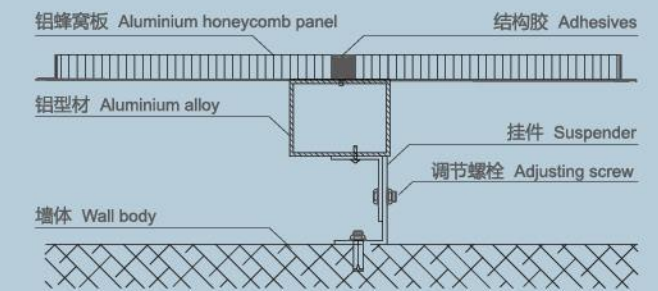
Widely used in high-end KTV, bars, clubs, administrative buildings, supermarkets and other public places.



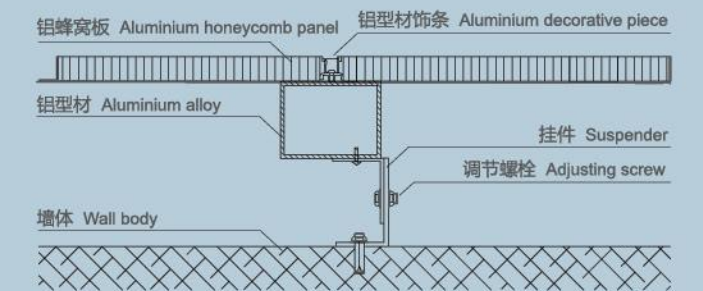
**General Honeycomb Panel**  
常规蜂窝板



蜂窝板墙面安装结构图 HONEYCOMB WALL SURFACE INSTALLATION STRUCTURE



安装方案一



安装方案二

**General  
Honeycomb Panel**  
常规蜂窝板



# Marble Honeycomb Panel

## 大理石蜂窝板

### 特点:

**强度提高:** 大理石与铝蜂窝板复合后, 其抗弯、抗折、抗剪切的强度明显得到提高, 大大降低了运输、安装、使用过程中的破损率。且保持了天然石材的主要性能指标, 耐用年限长。

**抗污染能力提高:** 复合板因其底板更加坚硬致密, 同时还有一层薄薄的胶层, 可避免大理石表面可能出现的各种不同的变色和污渍。

**重量轻:** 大理石蜂窝板非常轻盈, 重量只有大理石通体板的 1/5 至 1/10, 要想用石材装饰天花板非它莫属。

**隔音防潮, 节能降耗:** 用铝蜂窝板与大理石做成的复合板, 因其用等边六边形做成的中空铝蜂芯而拥有隔音、防潮、隔热、防寒的性能。在室内外安装后可较大降低电能和热能的消耗。

### Features:

**Intensity:** it's made of marble and aluminum honeycomb panel, that strengthen the intensity of resistance of bending, breaking and cutting, reduce damaged probability when transport, install and use. It also keep the main function of natural marble, could be use for long.

**Enhance contamination resistance:** the panel become more hard, the thin glue line is able to avoid besmirch or color-change on the surface of marble.

**Light weight:** the panels are light enough, as weight as one fifth to one tenth of marble, it's the suitable ceiling among ceilings made of stone material.

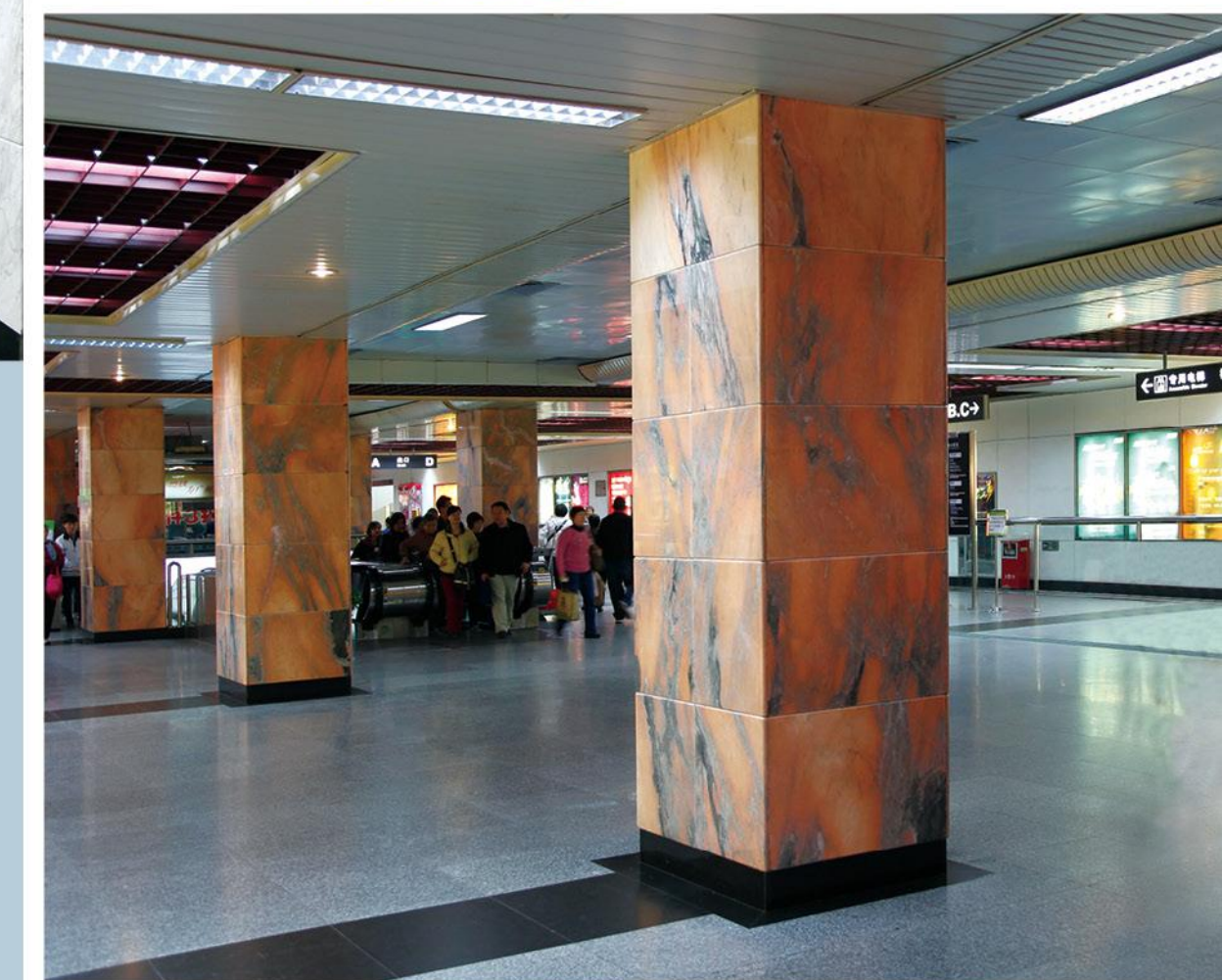
**Sound-absorbing and energy conservation:** because of the hollow honeycomb core, the panel owns characteristics of sound-absorbing, damp-proof, heat insulation and cold-proof, and it's able to save energy when used.

### 适用范围:

各类场所的内外墙、地面、窗台、门廊、桌面装饰等。

### Scope of application:

Various places of wall, ground, windows, porch, desktop decoration, etc.



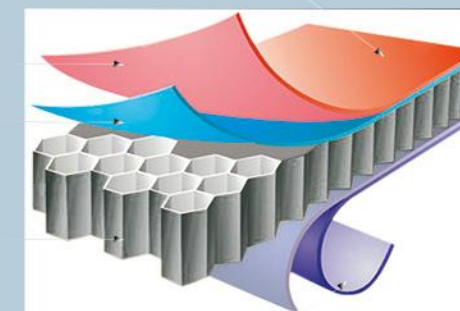
PVDF 氟碳树脂涂层  
PVDF fluorocarbon resin coating

铝合金板  
Aluminium alloy plate

航空粘合剂  
Air adhesives

铝质蜂窝芯  
Aluminium honeycomb core

保护性背涂  
Protective back coating



## Art Of Carving Digital Piercing Series

### 艺术雕刻、数码冲孔系列

#### 特点:

冲孔天花是采用电脑数控冲压设备, 精选优质的金属材料, 以不同规格或花款的冲孔工艺来美化金属板面, 能舒缓由于封闭式所造成的压抑感, 若隐若现, 开阔视野空间感官性。

其外观优雅, 优异的抗腐蚀性能, 防火防潮, 经久耐用, 不受正负压影响, 有利于通风口或其它设备的散热和透光照明。

#### Features:

Punched ceiling is the use of computer numerical control punch press equipment, selected high-quality materials, with different specifications or punching process to beautify the of metal sheets, and alleviate depression caused by the sense of closed-end, indeed, the sense of space to broaden our horizons.

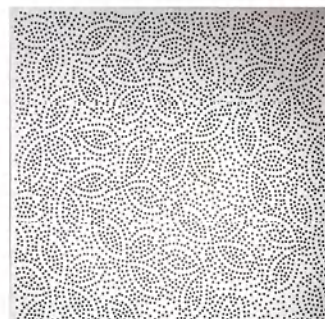
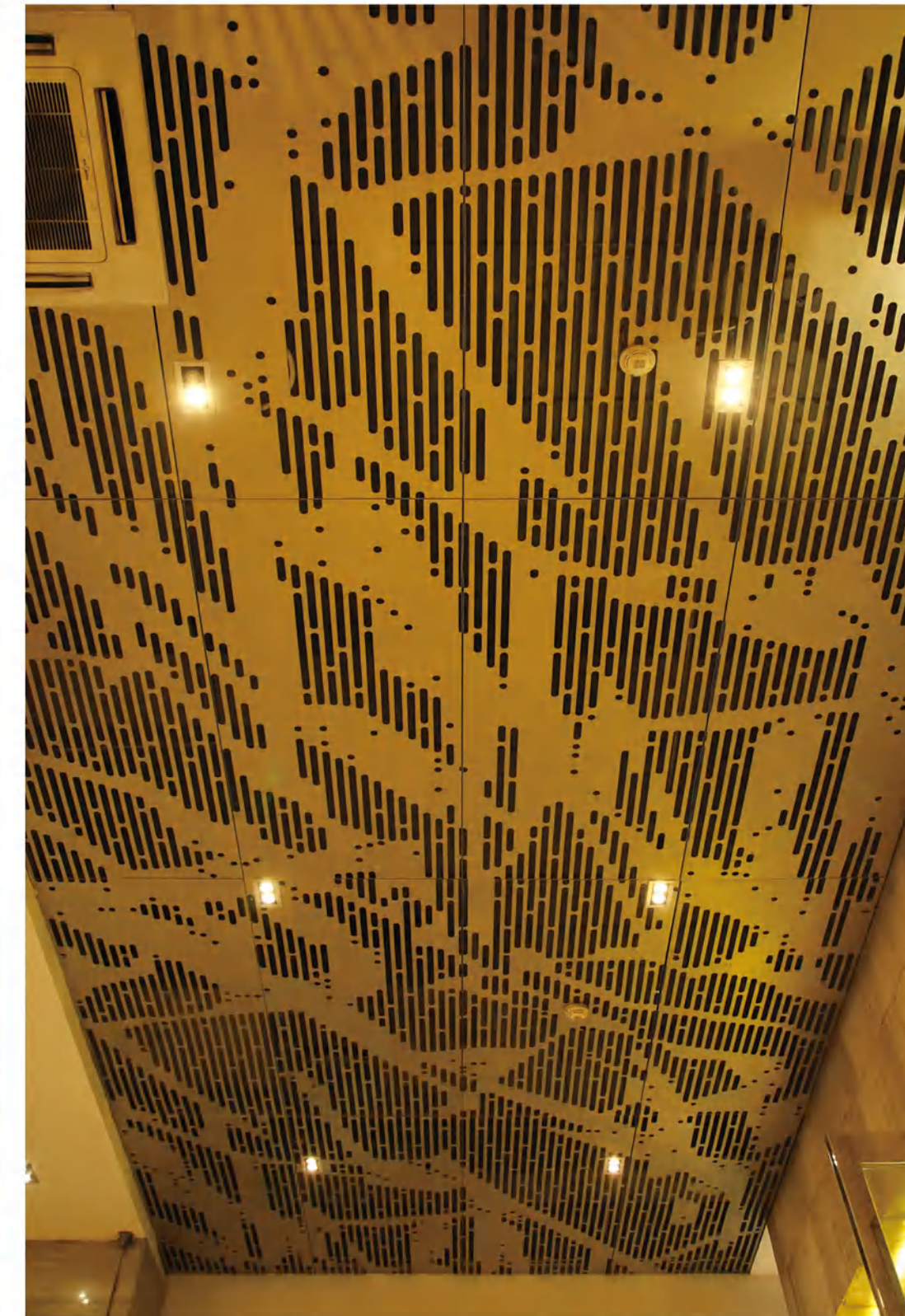
It's elegant appearance, fire proof, durable, free from positive and negative pressure effects, conducive to the heat vents or other equipment, and light illumination.

#### 适用范围:

适用于建筑物的天花板、内外墙、高速公路、铁路、地铁站机场等设施中的环保噪声治理屏障, 发电机房、工厂及其他需要降噪的场所。

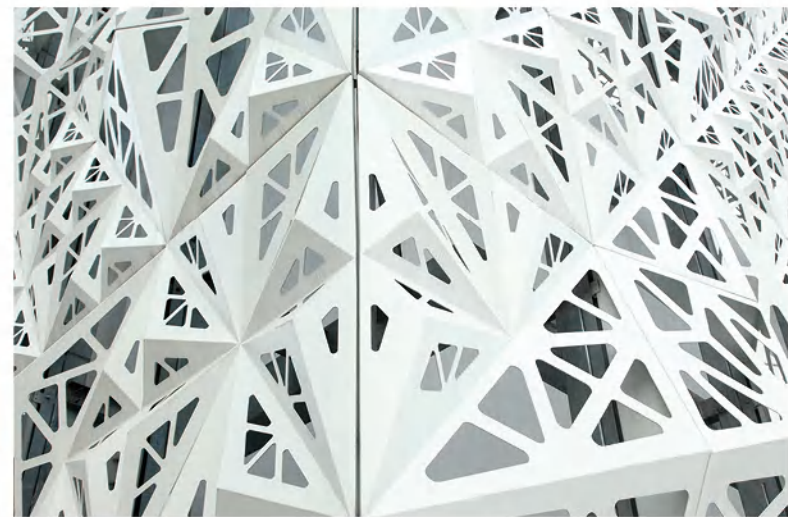
#### Scope of application:

Apply to the building ceiling, interior and exterior wall, highway, railway, subway and airport facilities, environmental noise control barriers, generator room, factories and other places require to reduce noise.



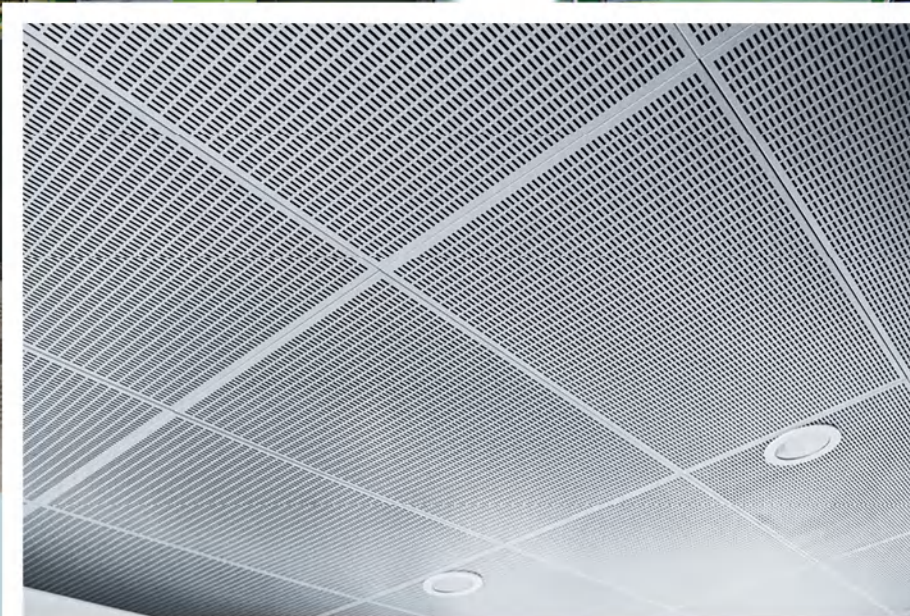
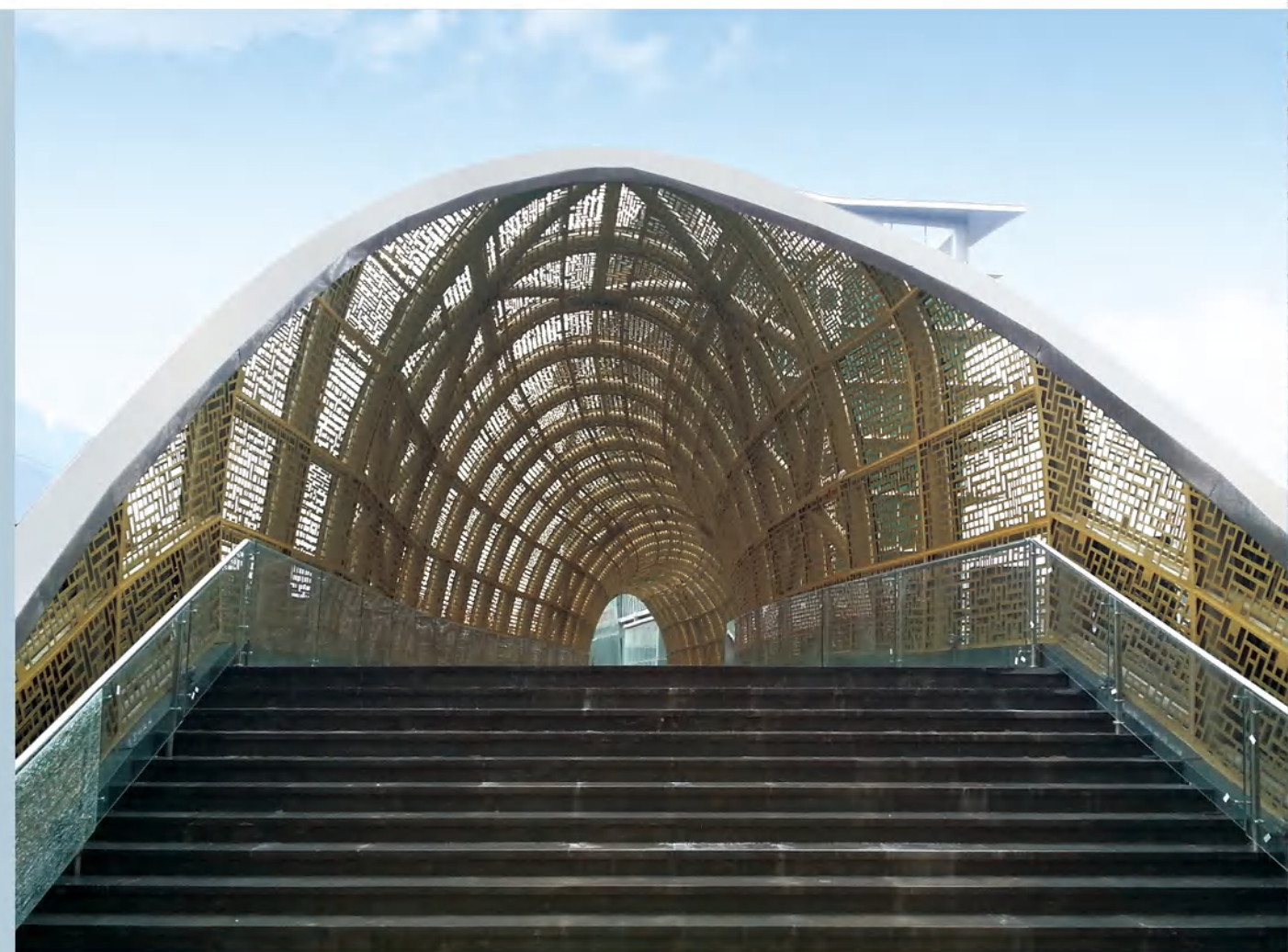
**Art Of Carving Digital  
Piercing Series**

艺术雕刻、数码冲孔系列

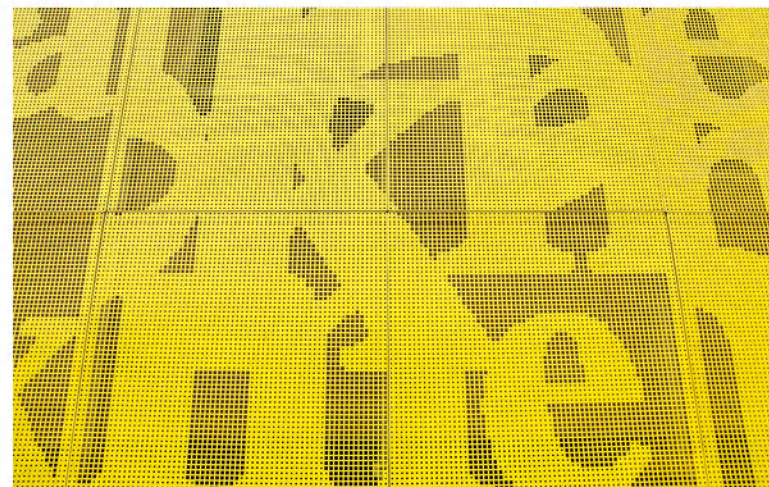
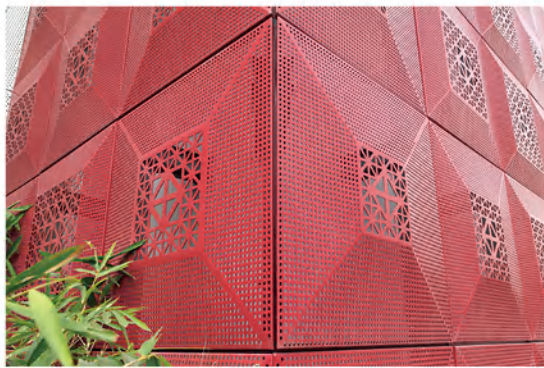
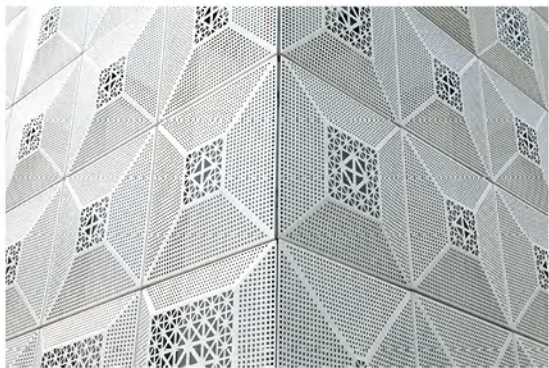
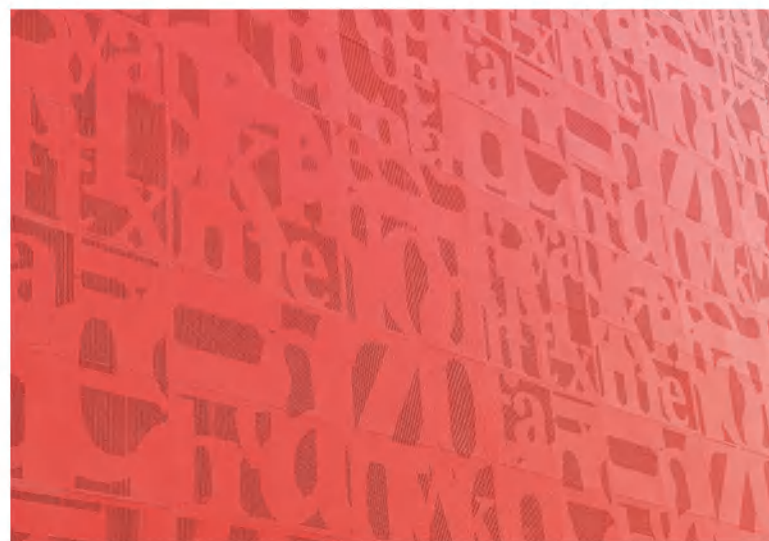
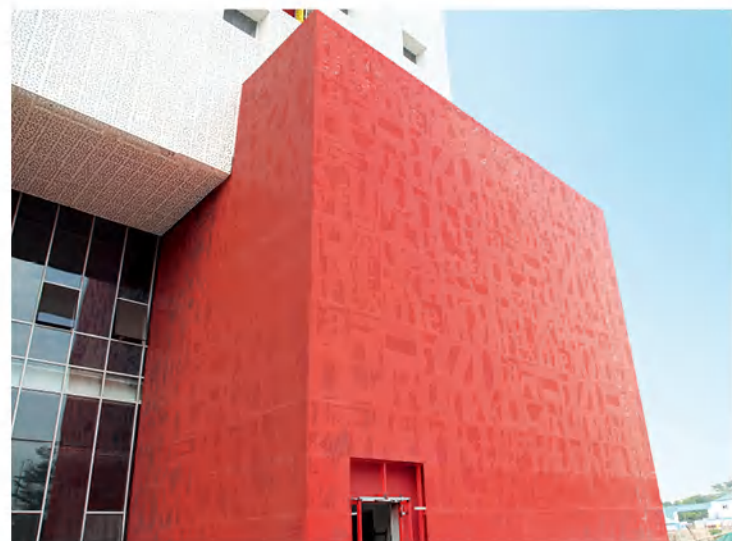


Art Of Carving Digital Piercing Series

艺术雕刻、数码冲孔系列



Art Of Carving Digital Piercing Series  
艺术雕刻、数码冲孔系列



## Modeling Panel Series

### 造型板系列

#### 特点:

造型天花板的出现弥补了传统标准天花造型单一的不足,其设计独特创新,能根据空间的位置不同设计不同的装饰风格,充满现代的时尚气息,展现了空间强烈的立体感。优质的材料与生产工艺确保了产品的平整度,色泽新颖,不易褪色。

#### Features:

Modeling the ceiling overcomes the shortcoming of the traditional standard smallpox modeling single, its unique innovative design, according to the space position of different decorative style, full of modern flavor of fashion, show the strong sense of three-dimensional space. High quality materials and production process to ensure the smoothness, the color of the product is novel, not easy to fade.



#### 适用范围:

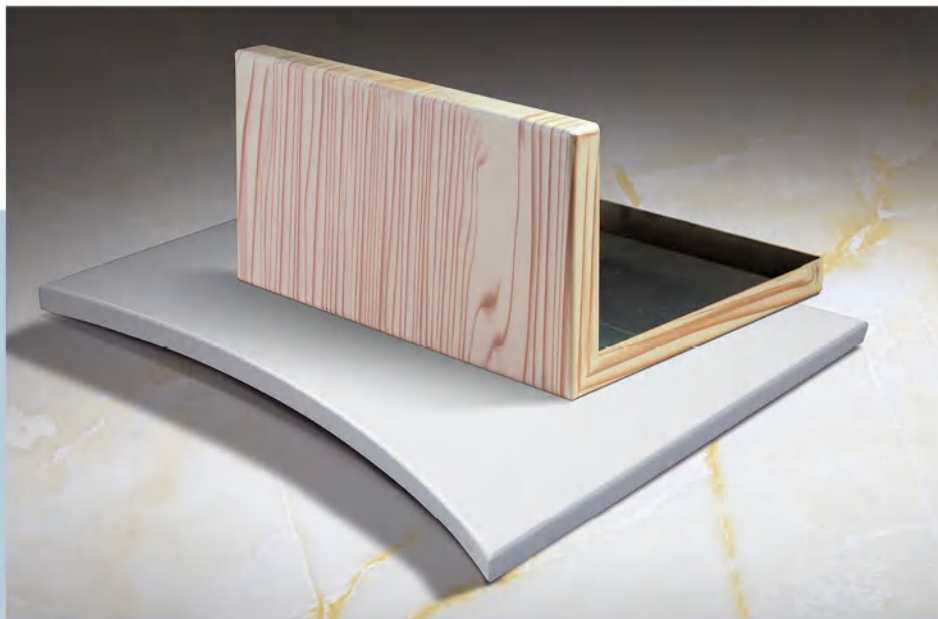
酒店, 商场, 商业建筑, 行政楼房, 超市等各种公共场所。

#### Scope of application:

Hotels, shopping malls, commercial buildings, administrative buildings, supermarkets and other public places.



Modeling  
Panel Series  
造型板系列



**Modeling  
Panel Series**  
造型板系列



## Hook-on plate Series

### 勾搭板系列

#### 特点:

异型勾搭板光华流畅的平面体现时尚触觉, 带动现代设计灵感。精致的天花片平整而稳固, 可徒手装卸, 无须利用任何工具, 极为轻易; 并可设置隔音棉, 缔造完美的吸音功能。

结构简单: 此结构为单向平行龙骨勾搭式结构。

密拼性强: 板与板之间的拼接是通过龙骨有次序搭折在一起的, 板边独特的勾搭设计, 能很好地控制板与板之间的活动性, 从而确保了板与板之间的缝隙更严密平整。

便于维修: 此结构针对维修保养配套有独特的检修口设计, 而不影响外观, 确保天花的整体统一美观。

用材灵活: 与暗骨式方板结构相比, 此结构板材的厚度为 1.2 至 3.0mm, 尺寸规格可根据现场设计作选择, 大大弥补了暗骨式结构的局限性。

冲孔样式灵活: 可提供任意孔径、孔距进行自由设计。

防风性强, 安全性高: 每块板都设计安装有防风卡码, 适合户外装饰。

#### Features:

It's smooth surface show sense of fashion, bring about inspiration of modern designing. The delicate ceiling is flat and stable, could be installed and unloaded, it's easily finish it without any tool. On the other hand, it could be insert sound insulation cotton to create perfect sound-absorbing function.

Simple structure: it's hooking structure of one-way parallel to carrier.

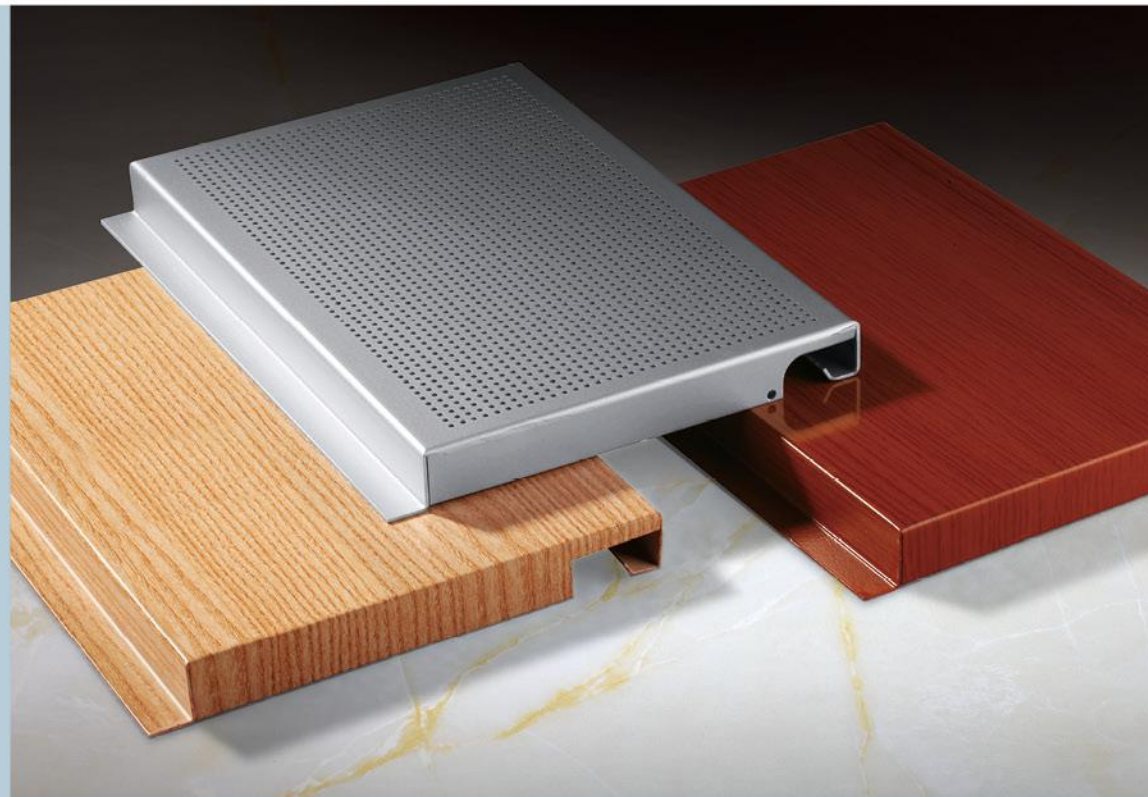
Strong tightness: carriers splices panels together ordered, the unique designing of edge of panels well control activity among panels, so as to make sure gaps more tight and flat between panel and panel.

Convenient to maintain: there is design of unique access port aim at maintain, but does not affect the appearance.

Flexible in material adoption: compared to clip-in structure, it's thickness change from 1.2mm to 3.0mm, the size could be chosen by field design, which make up shortage of clip-in structure.

Flexible punching patterns: design according to any size of bore diameter and pitch of holes.

Strong function of windproof and safe: there are windproof card code on every panel, suitable to use in outdoor decoration.



#### 适用范围:

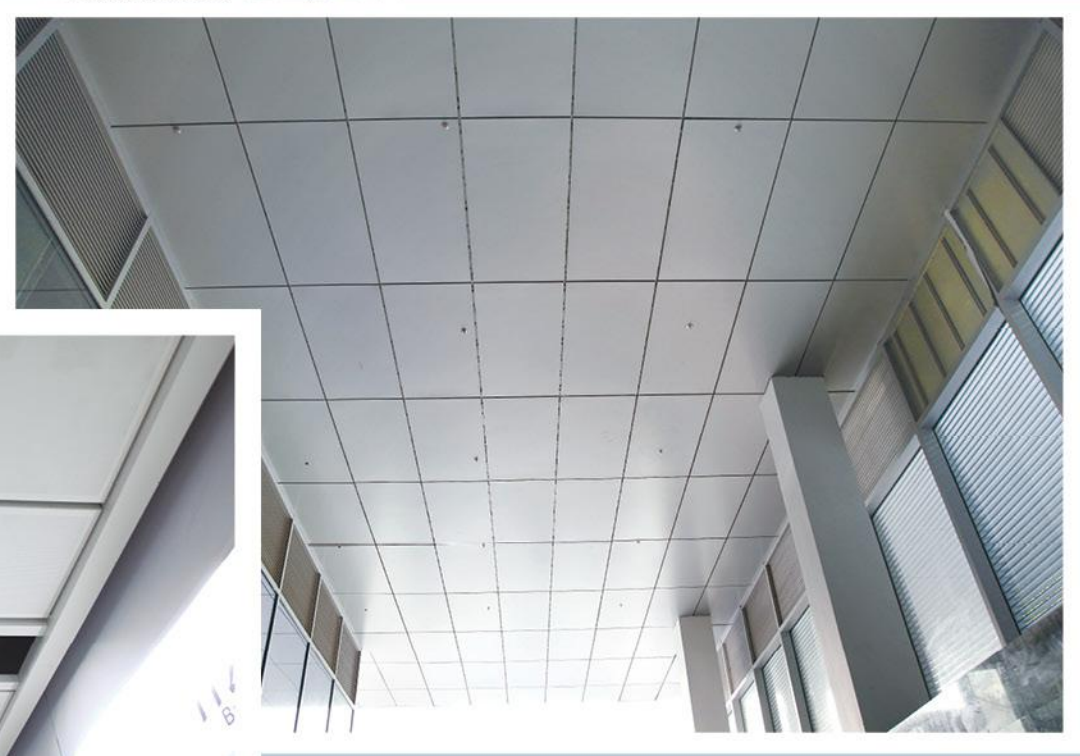
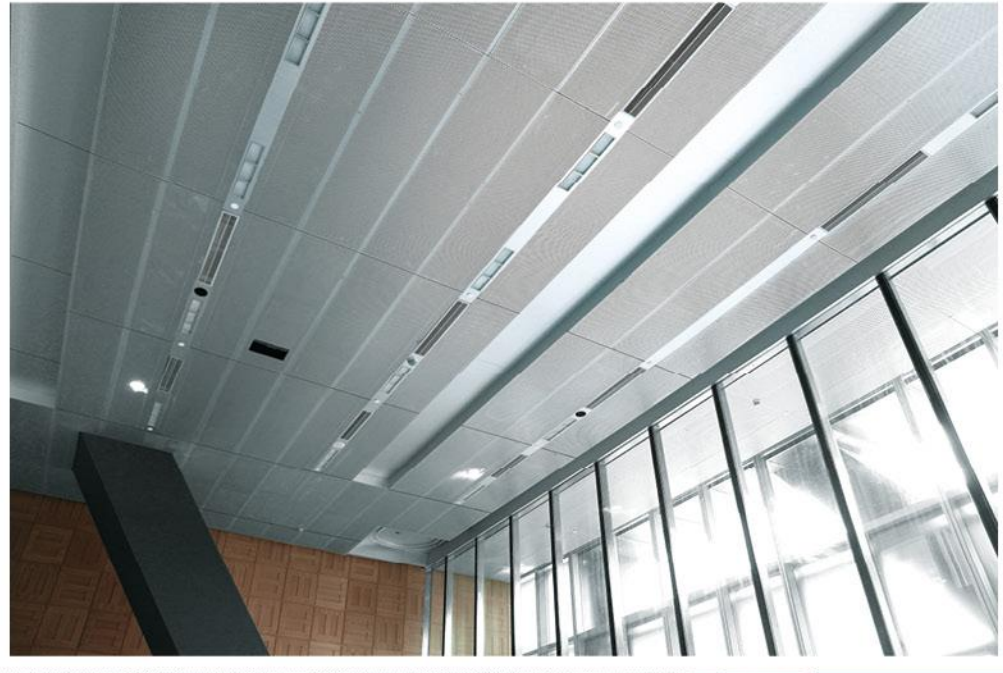
各大小型机场、地铁站、停车场、餐馆、学校、办公室等不同场所装饰。

#### Scope of application:

For various small airports, subways, car parks, restaurants, schools, offices and other different places decoration.



**Hook-on  
plate Series**  
勾搭板系列



## Single、Double Modeling Plate Series

### 单、双曲造型板系列

双曲铝单板造型展示 Hyperbolic Aluminum Veneer Model Show



#### 特点:

采用优质高强度铝合金板材，主要由面板、加强筋和角码组成。加强筋与板面后的电焊螺钉连接，使之成为一个牢固的整体，极大地增强铝单板幕墙的强度与韧性，保证了长期使用中的平整度及抗震能力。

板材使用氟碳漆喷涂，因涂料膜具有非粘着性，使表面很难附着污染物，更具有良好的自洁性能。具有卓越的抗腐蚀与耐候性，耐冷热性能好，能抵御强烈的紫外线照射，能保持不褪色、不粉化，使用寿命长。

曲线改变了以往铝板直线条的造型规则，不一样的弧度展现不一样的造型。采用特殊的工艺成型，克服了造型技术上的难题。款式多样，颜色丰富亮丽，营造了独具现代艺术的时尚珍品。

#### Features:

Made of high strength aluminum alloy plate, is mainly composed of a panel, stiffener and a bracket. Strengthen the welding screw bar and plate after the connection, make it become a solid whole, enhance the strength and toughness of the aluminum veneer curtain wall greatly, ensures the flatness and the seismic capacity during long-term use.

Plate using fluorocarbon paint spraying, the coating film with non adhesive, the surface is very difficult to adhere to pollution, but has a good self-cleaning performance. Anti corrosion and superior resistance, hot and cold resistant performance is good, can withstand the strong ultraviolet radiation, can maintain not fade, not powder, long service life.

Curve changed shape rules the aluminum straight line, not the same radian does not show the same shape. The process of forming a special, overcomes the problem of modeling technology. Diverse styles, colors bright, with modern art treasures to create fashion.

#### 适用范围:

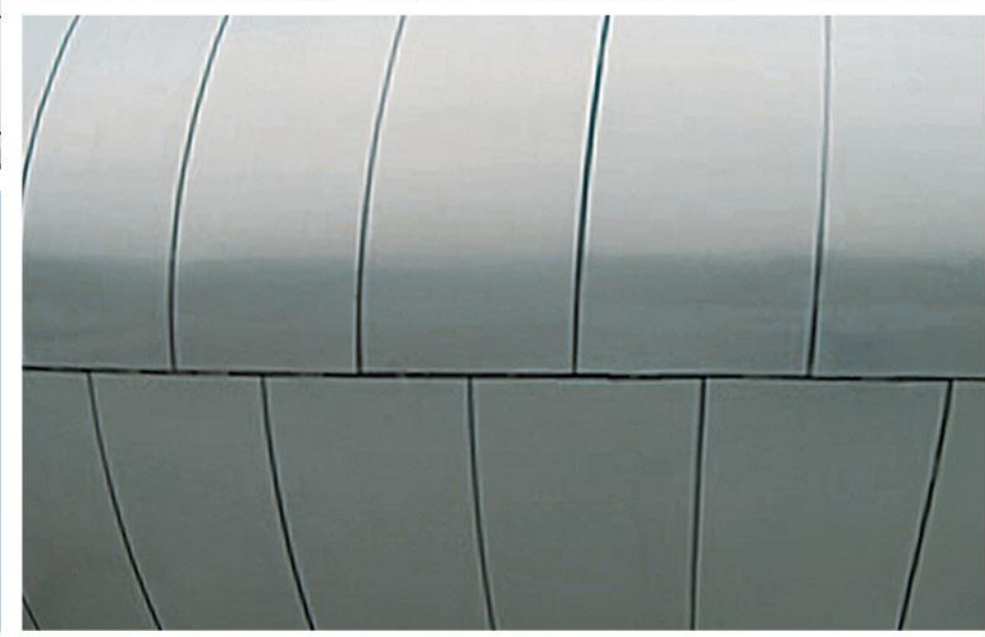
建筑支柱、室外装饰、人行天桥、地铁站、海运工具、室内异形吊顶等。

#### Scope of application:

Building curtain wall, outdoor decoration, advertising signs, instrument shell, pedestrian bridge, subway stations, shipping tool, indoor shaped ceiling.



**Single、Double  
Modeling Plate Series**  
单、双曲造型板系列



# Sun Visor Series

## 遮阳百叶系列

### 特点:

遮阳通风, 保温隔热: 遮阳系统的铝合金叶片在  $0^{\circ}$  -  $105^{\circ}$  之间可调, 具遮阳、调光、通风、防雨、防风、防尘作用, 可水平或垂直安装, 关闭后可以实现完全封闭, 具保温、隔热、降噪、部分防盗作用。

节能环保, 抗紫外线: 户外遮阳系统的运用, 使整栋建筑既节能又环保, 空调可节能 40%; 保持了室内空气的流通; 有效阻挡紫外线, 遮阳的同时保证室内光线充足, 不影响室外景物的观赏。

集功能性和装饰性于一体: 精巧的结构设计、高品位的产品品质、多变的外形和鲜明柔和的色彩, 使得系统大气华美, 与建筑物外立面风格相配合, 既能提高建筑物整体形象, 又能够保证高效的遮阳效果。

### Features:

Sunshade and heat preservation : the aluminum alloy panels are adjustable between angle of 0 to 105, sunshade, light adjusting, ventilate, rain, wind and dust proofing. It can be install in both of horizontal and vertical ways, own heat preservation, noise reduction, play a role of anti-theft when close.

Environmental, anti-UV ray : the application of the sun visor system make the whole building energy-saving and environmental, keep air transport and fresh, anti-UV ray, guarantee there is enough sunshine in the room, but not affect on appreciating scenery outside the window.

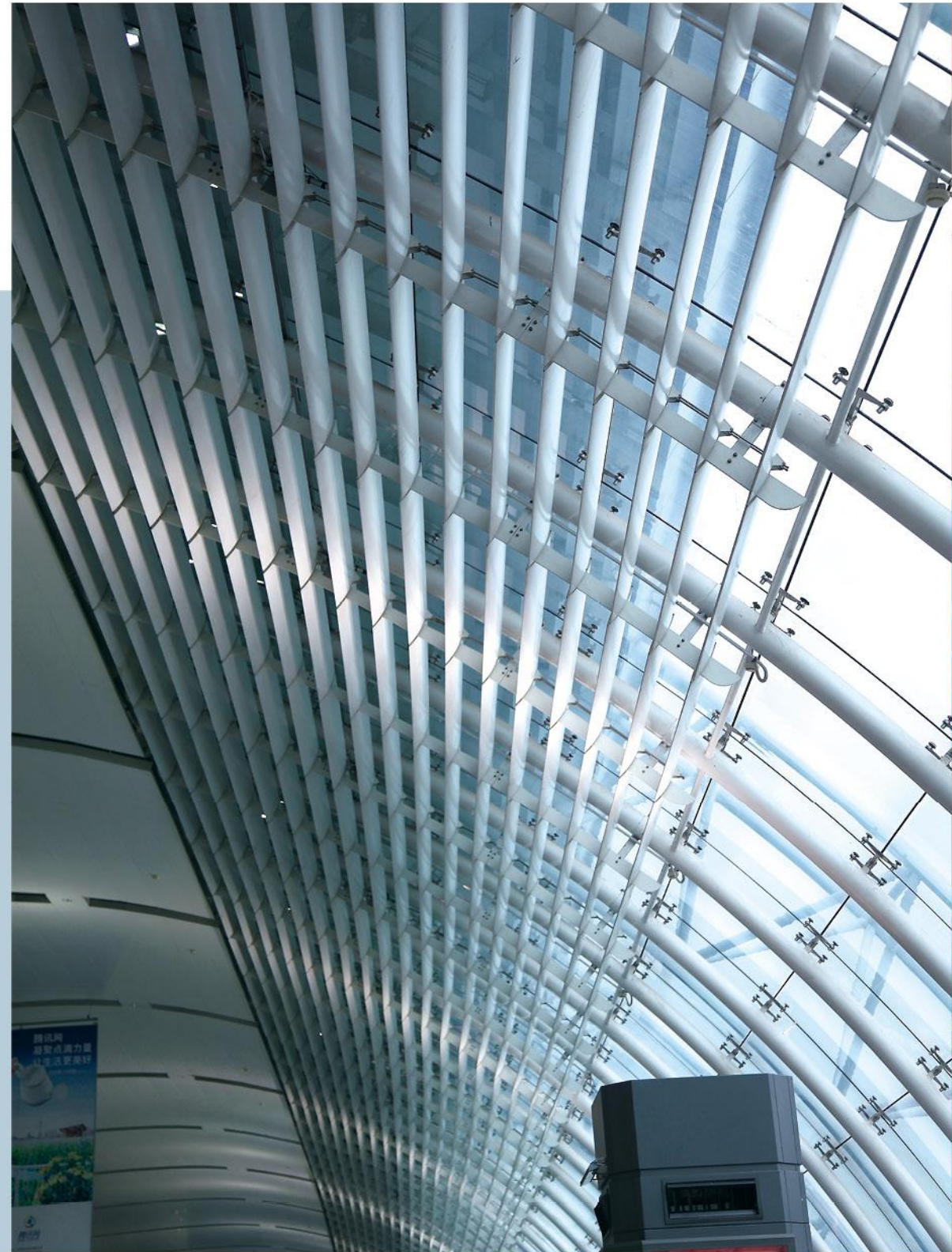
Functional and decorated : the refine design, high quality, flexible shapes and bright colors make the system luxurious, which is appropriate match the style of the building, that enhance the image of the building, on the same time have sunshade effect.

### 范围:

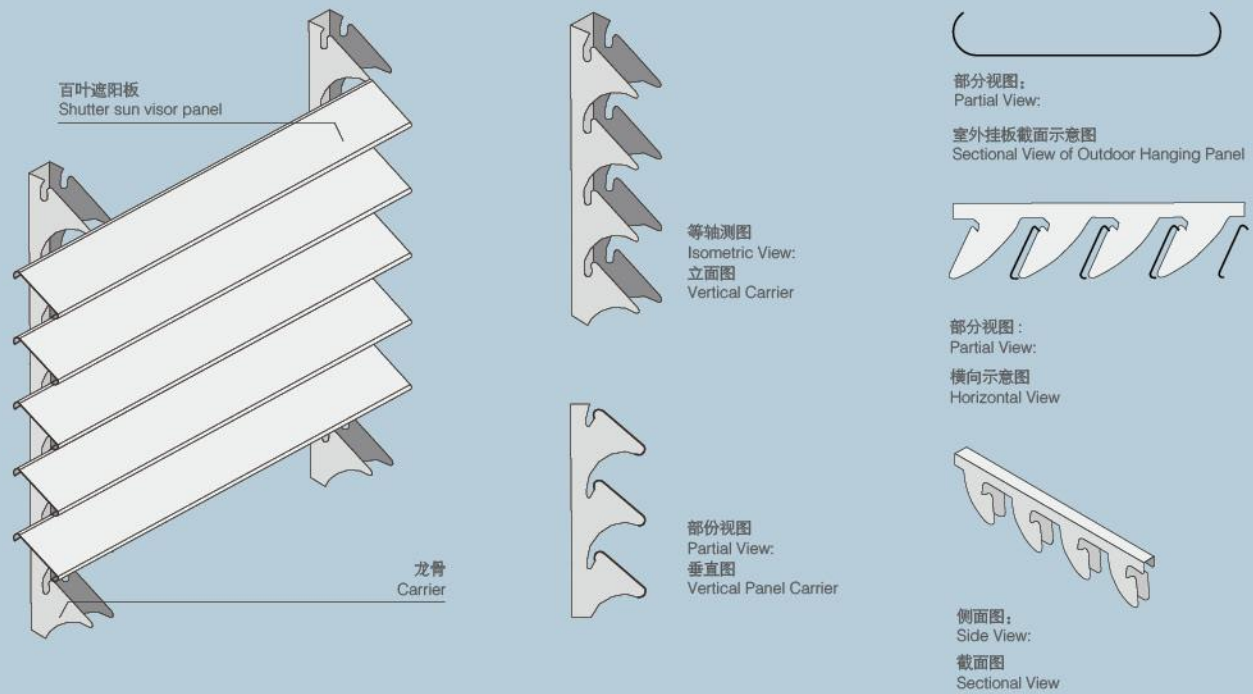
广泛应用于大型商场、展览馆、车场、地铁站等场所的立面或顶面遮阳。

### Scope of application:

Widely used in shopping malls, exhibition halls, stations, subway stations and other places of the facade or top surface shading.



### 百叶遮阳板系统结构图 Structure Diagram of Shutter Sun Visor Panel



## Acoustic Panel Series

### 吸音板系列

#### 特点:

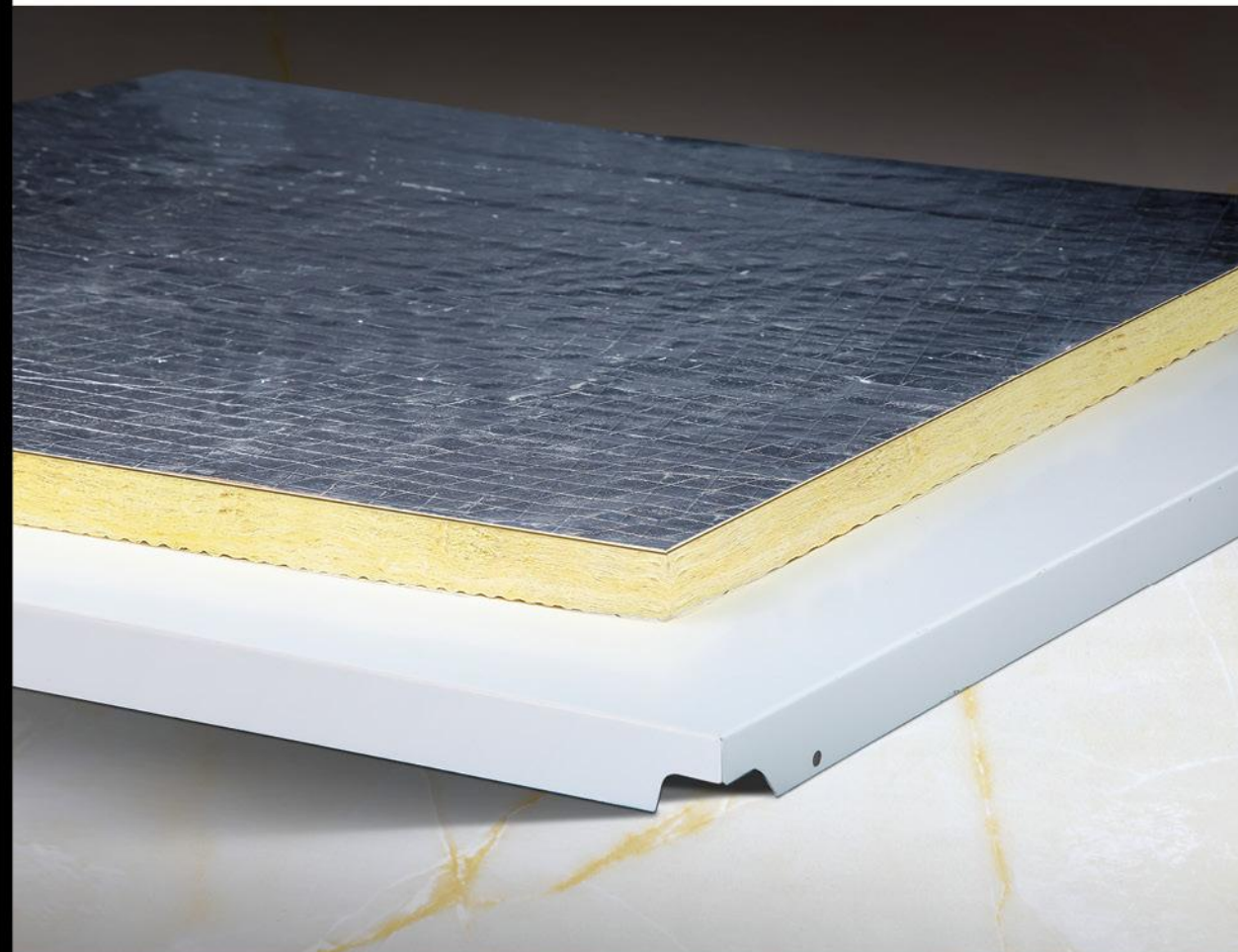
纳米饰面天花吸音系列是专为既有声学要求,又有美观要求的吊顶系统而设计的。在天花板和墙壁板本身的优点之上兼备了出色的吸音功能,每孔的大小尺寸及孔间距离均经过声学理论精密计算后加工而成,更具吸引力,为传统的吸音材料市场增添了一种全新的选择。

吸声频谱高,对低、中、高频的噪声均有较佳的吸声效果。具有难燃防火、无粉尘污染、装饰性强、施工简单等特点。

#### Features:

Nano ceiling is designed for ceiling system asks for artistic and sound-absorbing. Except the advantage of ceiling and wall, it also have excellent sound absorbing function. Every detail made by precise design, full of attraction, offer a new choice.

It have excellent effect on absorption of low, middle and high noisy, resistant to fire, powder pollution, strong in decoration, simple construction.

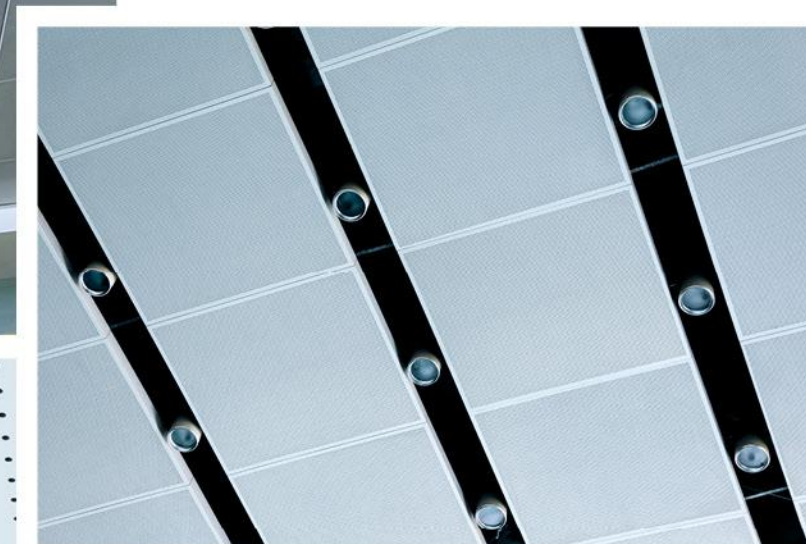


#### 适用范围:

广泛应用于会议室、电视台、演播室、影剧院、视听间、歌剧院、休闲娱乐城、酒店、多功能厅、音乐厅、酒吧、餐厅、商场、学校、大礼堂、体育馆、KTV等。

#### Scope of application:

Widely used in meeting room, TV station, studio, theater, opera house, entertainment center, hotel, multifunctional hall, music hall, bar, restaurant, shopping mall, school, assembly hall, gym and KTV.

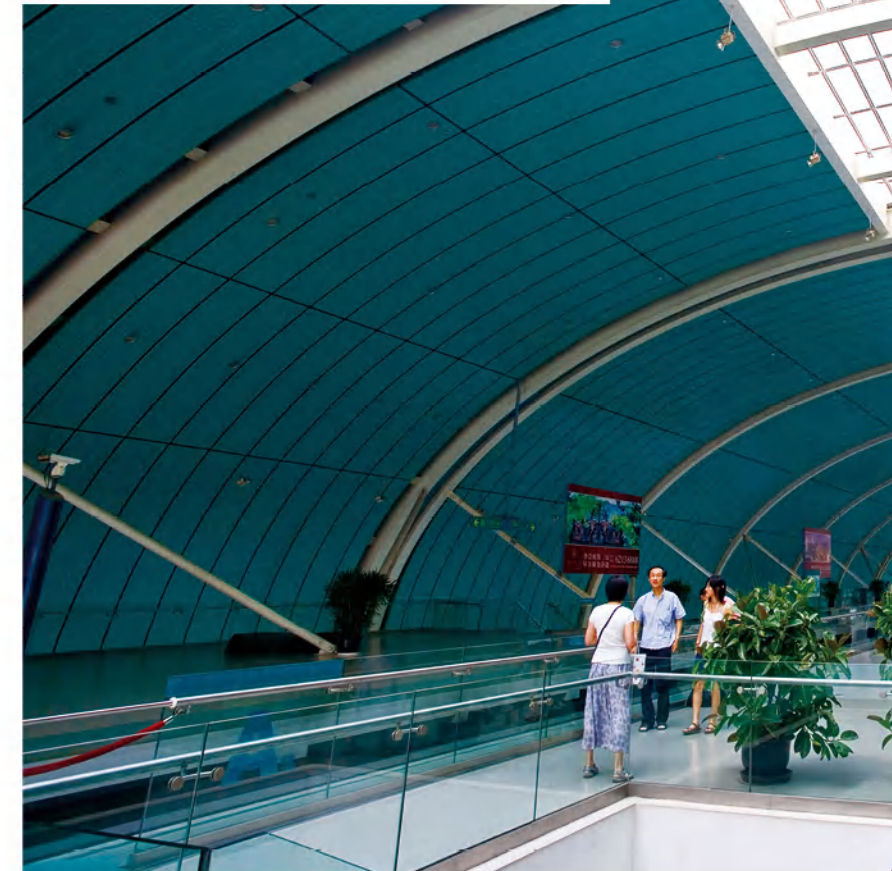


Project Case  
Showing  
工程案例展示

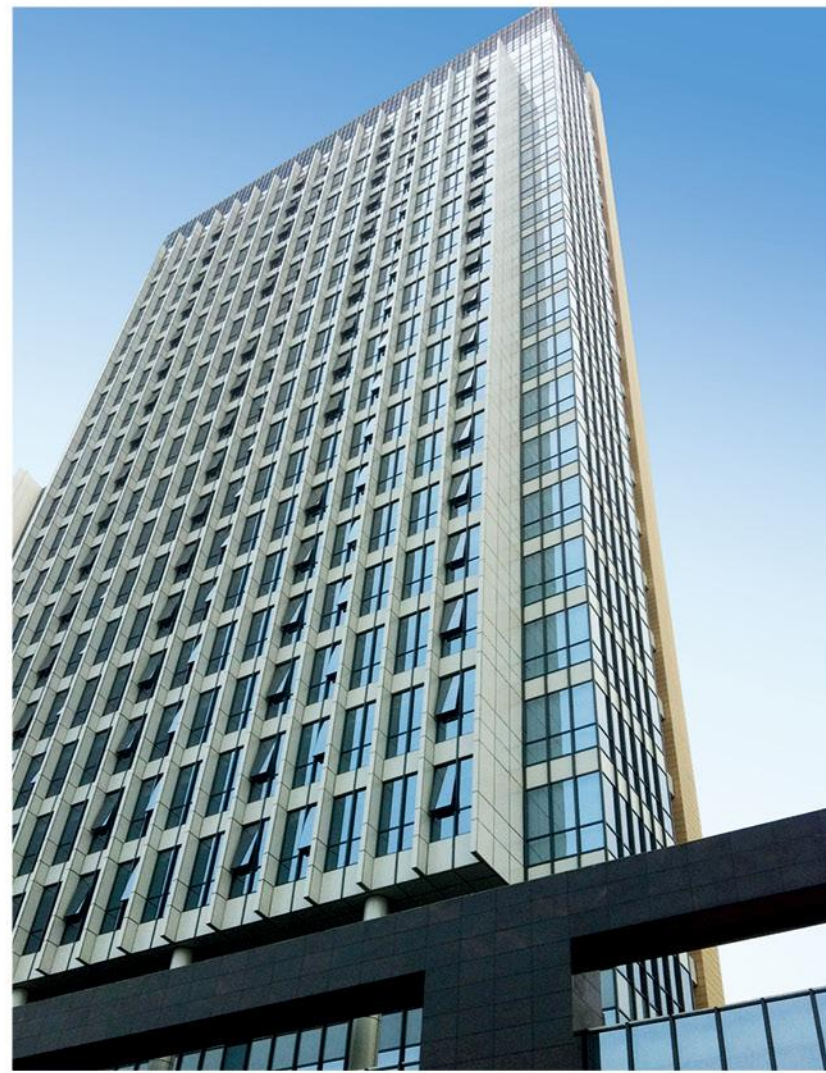


Project Case  
Showing

工程案例展示



**Project Case Showing**  
工程案例展示



Project Case  
Showing

工程案例展示



Project Case  
Showing

工程案例展示



**Project Case Showing**  
工程案例展示



**Section Project Directory**  
部分工程名录

梧州高铁  
宿州中医院  
全椒政务中心  
藤县高铁  
安徽司法厅  
明光市龙山路公安局  
淮南工商局  
宜昌船厂  
广西审委会  
江苏盐城供电局  
江苏盐城质监局  
山东东营儿童医院  
秦皇岛金财大厦  
南京尼桑 4S 店  
成都广汽本田  
南京民政局  
长沙文化广场  
含山县人民医院  
桂林英山远程法院  
国贸嘉和儿童体校  
金海马家居广场  
新世界广场  
南宁物价局  
广州军医院  
北辰洲际酒店  
慈溪环球中心  
北京西单赛特购物中心  
北京海淀剧院  
北京西城区检察院  
王府井外文书店

国家信息中心  
上海金山大学城  
上海体育馆  
南京金鹰国际购物中心  
沈阳辽沈战役纪念馆  
北京电力医院  
济南市中心医院  
胜利油田总局  
南京八一医院  
山东将军集团烟厂  
禹城市东方大厦  
徐州市鼓楼区法院  
徐州市古建陈列馆  
中国矿业大学  
郑州市地税大厦  
郑州市图书馆  
昆明市嘉华大酒店  
珠海市长江实业花园  
南昌烟草大厦  
浙江平湖人民医院  
宁波汽车站  
厦门太古机场  
厦门会计学院  
泉州国贸大厦  
常州天安数码城  
常州供电局  
河北邢台龙泉山庄度假村  
安徽大学  
合肥炮兵学院  
合肥客运总站  
合肥市黄金广场电脑城  
湖南大学  
长沙电力局  
国际科技大学  
驻马店中心医院  
长沙附二附三医院  
呼和浩特地税局办公大楼  
长沙市农行网点  
上海南江大学  
上海师范大学  
南京东南大学  
蚌埠电力公司

无锡火车站  
贵阳百货大楼  
杭州涌金广场  
南京电力公司  
青岛海洋大学  
北京丰台饭店  
北京玉泉大厦  
北京八一中学  
武警总部  
上海浦东国际机场  
上海长途汽车站  
南京喜来登大酒店  
南京师范大学  
河南电视台大楼  
济南遥墙机场  
南京红太阳装饰城  
山东师范大学  
山东徽山邮电局  
山东建工集团  
禹城市第一中学  
徐州发电厂  
徐州一中体育馆  
泉山区法院  
郑州银基商贸城  
昆明机场  
珠海市海怡湾畔  
江西省八二八宾馆  
贵阳百货大楼  
杭州临安外贸公司  
宁波鄞州汽车站  
福建炼油乙烯分析实验楼  
厦门集美理工学院  
晋江燃气发电厂  
常州天宁法院  
常州广化桥建行总行  
合肥国资委  
合肥商业学院  
淮南矿二院  
合肥交警中心  
合淮阜高建公司服务站  
长沙邮政局  
长沙市建行网点

三一重工  
湘乡中学  
南京三江学院  
呼和浩特新华书店  
杭州影剧院  
上海国际赛车场（部分）  
上海浦东张江高科技园区  
南京中央商场  
安徽省经贸委经营楼  
无锡地区人民医院  
杭州邮电大学  
浙江余姚服装市场  
广西电信局  
常州第一人民医院  
北京富顿商务中心  
北京中山公园  
中关村电子科贸枢纽中心  
呼和浩特市政府驻京办事处  
上海虹桥国际机场  
上海火车站  
南京希尔顿大酒店  
南京建邺区人民政府大楼  
沙泽市南华广场  
济南市法官培训学校  
济宁人民医院  
山东铁路局  
山东省房地产开发总公司  
山东恒信发展公司龙口重点工程  
徐州市三中教学楼  
徐州师范大学工学院  
徐州中国人民解放军 73061 部队装备部  
江苏省睢宁财政局  
安徽省淮北行政办公大楼  
昆明市天恒大酒店  
四川中国移动分公司  
江西省第一附属医院  
贵阳东风大厦  
宁波市国家安全局  
厦门大学  
厦门金海湾花园  
常州人才市场  
常州湖塘中行