

STANDARD INFORMATIONIZE WARD SPACE

Modern hospital construction	Informatization、 intelligentize、 automation
Bidirectional call and speaking、 nurse positioning 、 call forwarding、 Information Issuing、 data analysis	Reduce pressure、 promote efficiency、 improve experience



When nurse operate the door extension, the system can tell and record her position and prepare to gang control



When the call rings, the host/the extension of the room where the nurse stay/ the mobile device will response in the same time



By operating the multiple extensions, nurses can request backup in urgency situations



The system can inform the most proper nurse to handle at the first time the patient calls. Nurse can request backup in emergency



By pressing the 'drip alarm' button in the patient's bed extensions, the nurses can tell the needs exactly and handle them directly without answer



When the drip finished, the system will send the alarm to the nurse station while stuck the infusion tube immediately



By using the phone or host multimedia, the nurse can speak or broadcast to all/parts of the nursing unit



People can speak to each other by host station and bed/duty room/door extension



When patients rang, the 26-color doorlights can give a timely reminder to show the nurse degree, and to help people know where the nurses are



Different colors of LED lights or color areas show different conditions of patients, update automatically





To remind the patients kinds of messages, e.g: oxygen uptake reminder/fee reminder/medicine reminder



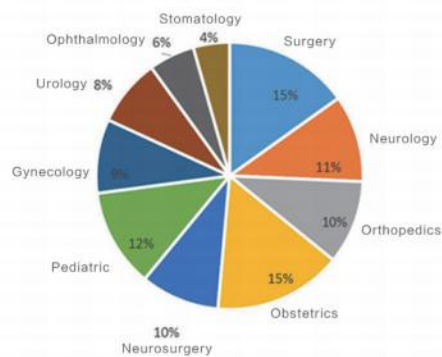
Connect to the HIS ,fetch the information in need, and publish the information to the devises that cover the nurse area



Save/upload/count/analyze/export the records of the nurses behavior



Help the managers make better decision with the statistics support



We can offer flexible custom-made solutions for different users



High band width 2-bus line, bring 50% installation efficiency improved



Device self-tests, journal output, automatic measurement, multiple electric protection

DEVICES

Nurse station



YH-927 medical care host
Connect to HIS server, manage the information in system and handle the calling and speaking

The door of the patients' room



YH-6227 gate extension
speaking + information publishing + nurse positioning +26 colors light Various size and two fit craft to choose

Ward bed



YH-6207 bed extension



YH-6257 bed extension

Bidirectional calling and speaking + information publishing + nurse marks Various size and two fit craft to choose

Toilet



YH-6277T toilet extension
Fix in 86box, waterproof IPX8, easy to trigger

Duty room



YH-6217 Duty room extension
Voice calls can be made to patients in the duty room

Corridor



YH-D208SA corridor display
Show the time/kindly remind/nurse position in the corridor, need strong electricity

Weak electrical well



Information interactive host
Power source of the two bus network system, information management

Other components



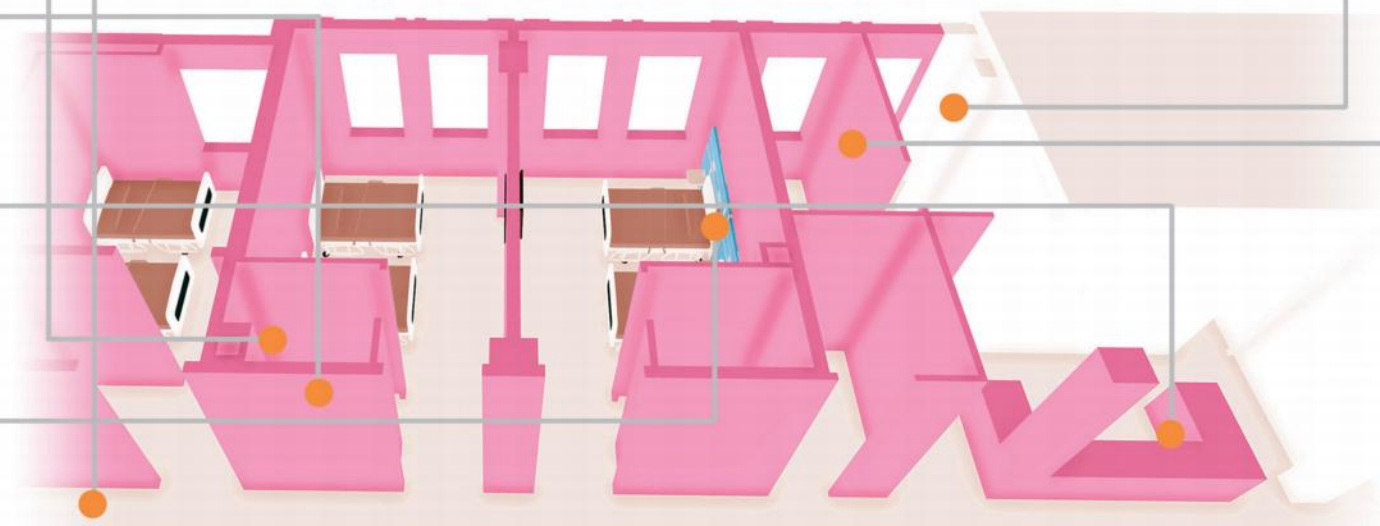
Information screen



Servers



Nurse station computer



SOFTWARE ARCHITECTURE

Presentation layer

Information publish platform NIS-RP

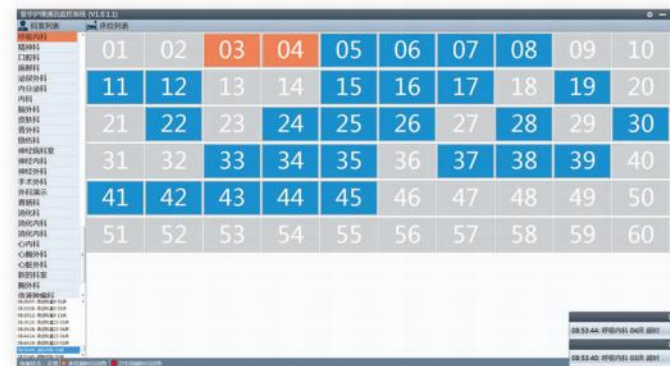
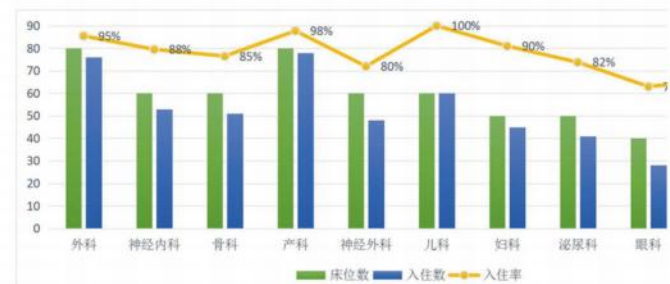
Publish the information that fetched from HIS to devices in different nurse areas



Applied layer

Real time monitoring platform NIS-RM
Data analysis platform NIS-SA

Monitor the nurse call handling performance gather the operation data in the nurse area and show the analysis result to the managers' accounts, to help them make better decisions



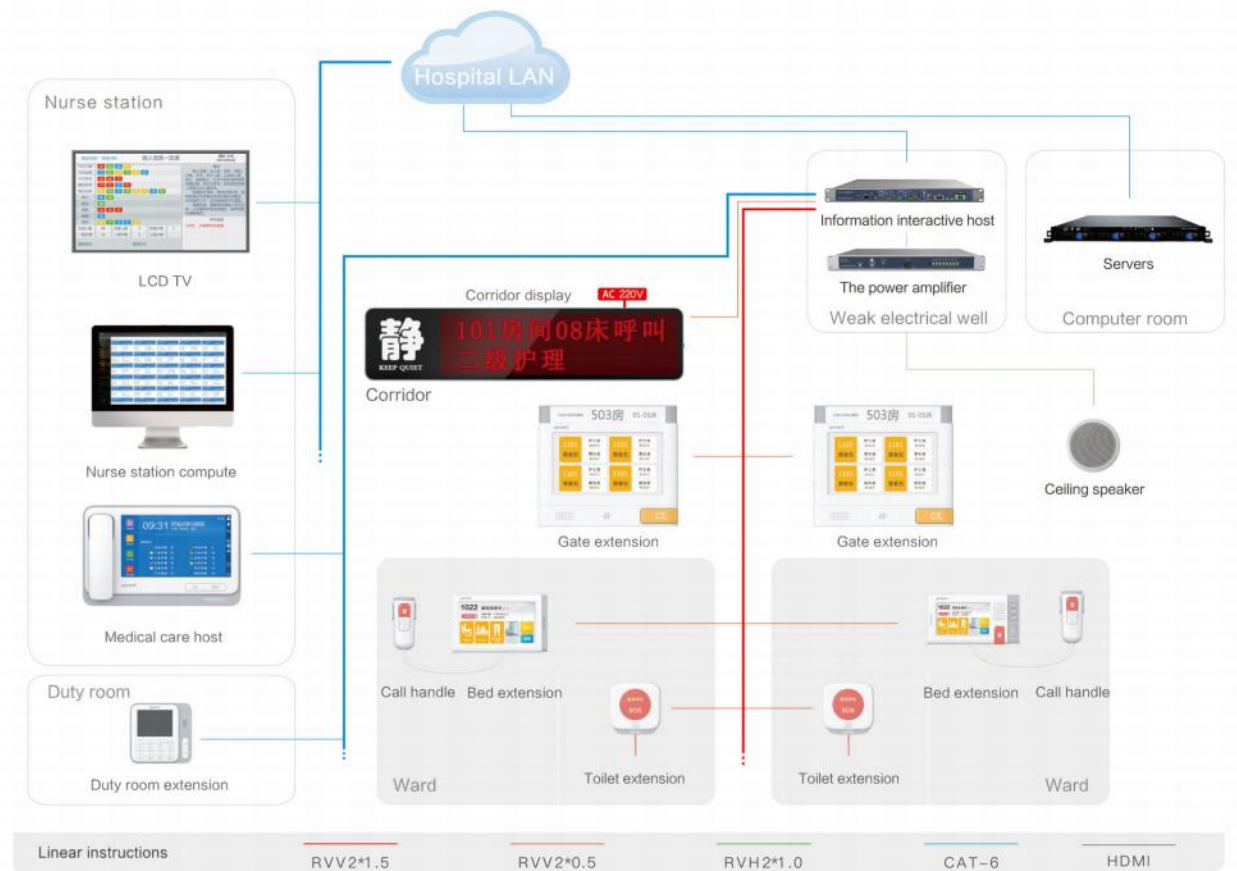
Data layer

Data interface server platform NIS-SP

Connect to HIS server, offer different interfaces



NETWORK DIAGRAM



MAIN IDEA



All covered communication



Intelligent information operation



Automated data management



Customize program optimize

FEATURE

Best solution for the ward

Quality extension & easy networking

B/S structure software

Both advanced in technique and stability

TO INSTALL LIVE

Standard informationize ward space

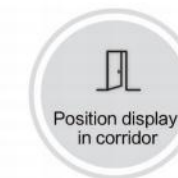


CLASSICAL SOLUTION

- Classical solution as a fundamental electric system in the ward
- Very easy to deploy and operate



People can speak to each other by host station and bed/duty room/door extension



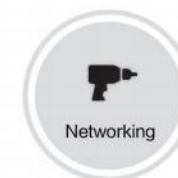
The display shows the bed who is calling when the phone rung, meanwhile the doorlights blinks (up to five colors)



When emergency happens, patients in the toilet can strike the extension to raise alarm, which possess waterproof IPX8



By using the phone or host multimedia, the nurse can speak or broadcast to all/parts of the nursing unit



High band width 2-bus line, bring 50% installation efficiency improved

DEVICES

Nurse station

Standard configuration capacity: 40/50/60
custom-made capacity: 72/84/98/112/128

YH-938K host YH-968K host YH-998K host

Patients' beds

Three way to choose : Half embed/ embed/ external installation

YH-EG99 bed extension YH-669 bed extension YH-6399 bed extension

The door of the patients' room

YH-M730 door lamp
Display call status, tricolor display care level

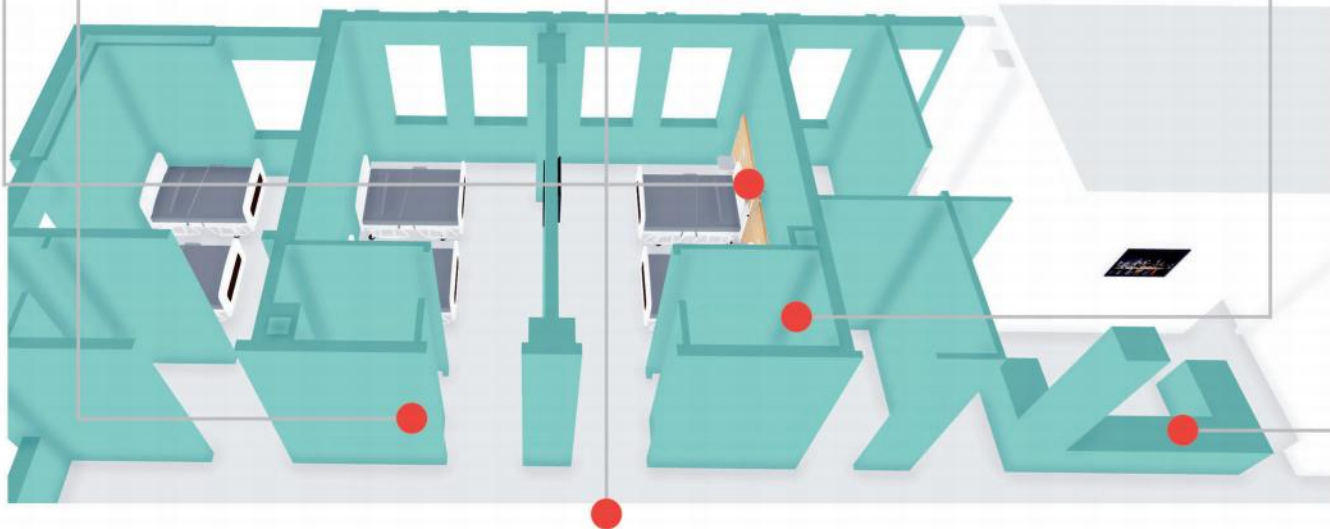
Toilet

YH-6089 toilet extension
86-box installation, waterproof, anti-salt spray corrosion

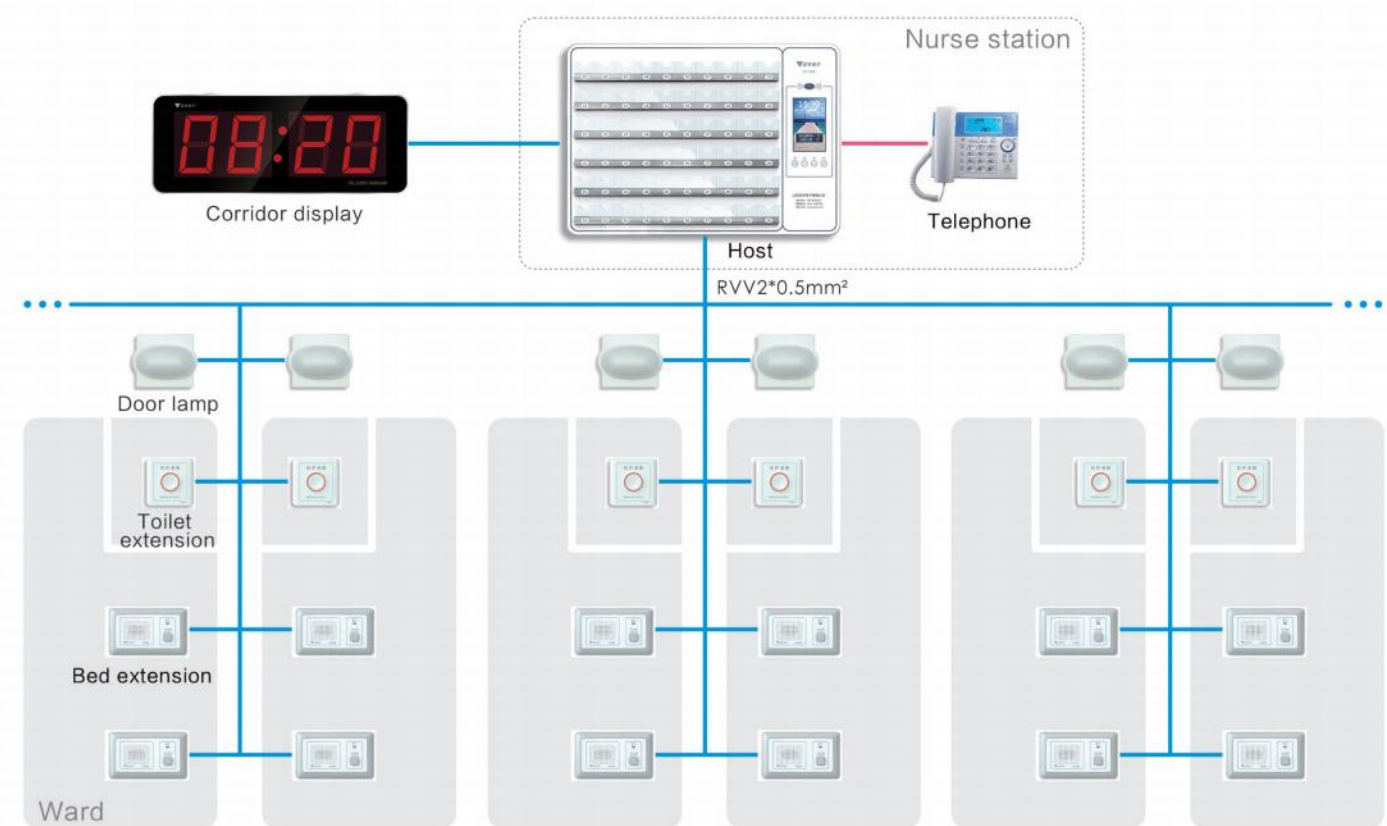
Corridor

YH-X245KM corridor display


Double-sided multifunctional display can display the room number, bed number, serial number and time of calling the patient, and support the synchronous language number and music function with the host



NETWORK DIAGRAM



MAIN IDEA

- 
Quality communication
- 
Simple installation
- 
Easy operation
- 
Great cost performance

FEATURE

- Cover 2 millions beds over china
- First two bus solution inventor
- 10 generation promotion in 20 years
- Both advanced in technique and stability