

IDEABOND

Color Chart

ISO9001:2008



东元国际
INTDERNATIONAL

COMPANY PROFILE



Company panorama



Lobby



Meeting room



Office

IDEABOND



东元国际
INTDERNATIONAL

GENERAL TECHNICAL DATA

Testing items		Result	Testing items		Result	Testing items		Result
Appearance qualit	Vesige	Indistinct	Weight	±4mm=5.7kg/m ²	Finish coating thickness	30±5 μ m		
	Coating omit	No	Outdoor temperature	No abnormality	Gloss tolerance	4.3(gloss56.8)		
	Ripples	No	Thermal expansion	1.59×10 ³ °C ⁻¹	Pencil hardness	3H		
	Flaw	No	Deflection temperature	105 °C	Toughness(T-bend)	2T no rift		
	Abrasion	No	Thermal conductivity	0.102kcal/mhr°C	Coating adhesive force	Class 1 (4B)		
	Scratch	No	Flexural rigidity	14.0×10 ³	Impact resistance(50kg.cm)	no depainting,no crack		
	Aberration	Indistinct	Penetrating resistance	9.0kn	Grinding resistance	7.4L/ μ m		
Dimensions deviation	Length	0~+0.4mm	180° peel strength	911.7N/mm	Mortar resistance	24 Hrs Pat test exceed		
	Width	0~+0.6mm	Acoustic insulation	25dB	Humidity resistance	3000hr no blister		
	Thickness	-0.02~0mm	Bending elastic modulus	2.8×10 ⁴ MPa	Boiling-water resistance	No change		
	Diagonals windage	1.7mm	Shearing resistance	28.6MPa	Salt-spray resistance	3000 hrs no blister		
	Edge unstraightness	0.4mm/m	Fire propagation	Qualifide	Acid resistance	No change		
	Warpage	2.0mm/m	Wind-pressure resi stance	Passed	Alkali resistance	Passed		
			Properties against water	Passed	Solvent resistance	Passed		
		Properties against air	Passed	Color retention	△E<5			
		Bending strength	112MPa	Chalk resistance	Max value:8unit			
		Minimum ben ding re dius	=300mm	Gloss retention	90%			

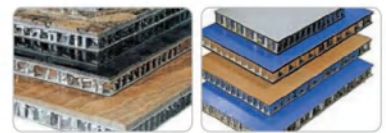
ALUMINIUM HONEYCOMB COMPOSITE PANEL

IDEABOND Honeycomb is an aluminium composite panel consisting of two cover sheets and a honeycomb core of aluminum bonded in a continuous process, which allows the production of large size panels with superior flatness. The material is rigid as well as resilient, and with high peel strength and excellent mechanical properties. With regard to finish of the surface, high quality lacquering system contributes to outstanding resistance to weather and industrial pollution. These particular characteristics make IDEABOND Honeycomb the ideal choice, not only for outdoor application, such as facade cladding, roofing, balconies, shelters etc., but also for interior design like artistic ceiling.



SPECIFICATION

Thickness(H)	Entity	6 mm	10 mm	15 mm	20 mm	25 mm
Thickness of ALU front sheet(d1)	[mm]	1.0 mm				
Thickness of ALU back sheet(d2)	[mm]	0.5	0.5	1.0	1.0	1.0
Weight	[Kg/m ²]	4.8	5.1	6.8	7.2	7.5



APPLICATION SCOPES

IDEABOND is used as cladding for diverse applications such as office buildings, hospitals, convention centers, airports, hotels, and critical design elements such as entrances, canopies, column covers and interiors, image programs, etc. Now let's use IDEABOND to add an image premium to the applications:

Curtain walls	Interior/Exterior decoration
Floor, ceilings	Washroom/Kitchen
Furniture	Roofs, roof edging
Elevators	Image programs
Balcony	Shops & tunned



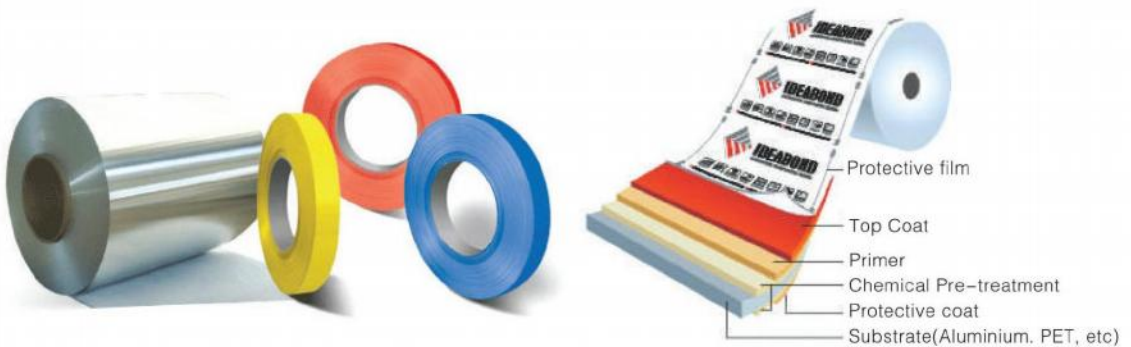


东元国际
INTDERNATIONAL

COLOR - COATED ALUMINUM COIL

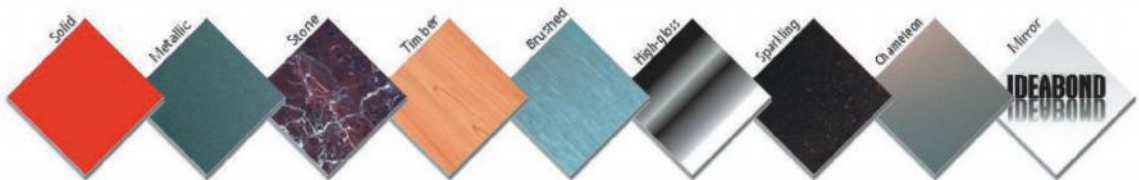


IDEABOND Color-coated Aluminum Coil combines all advantages of modern coil-coating technology in our full-automatic production line. The aluminum substrate gets degreased, chemically pre-treated and coated in a single step—resulting production process. IDEABOND owns patented technology of 3 digital coating systems which allow us to fulfill a variety of patterns on aluminum surface with excellent properties. IDEABOND conducts ongoing and intensive tests of raw materials and finished products in our cutting-edge laboratories and proved itself through years of experience, innovative developments and first-class service.

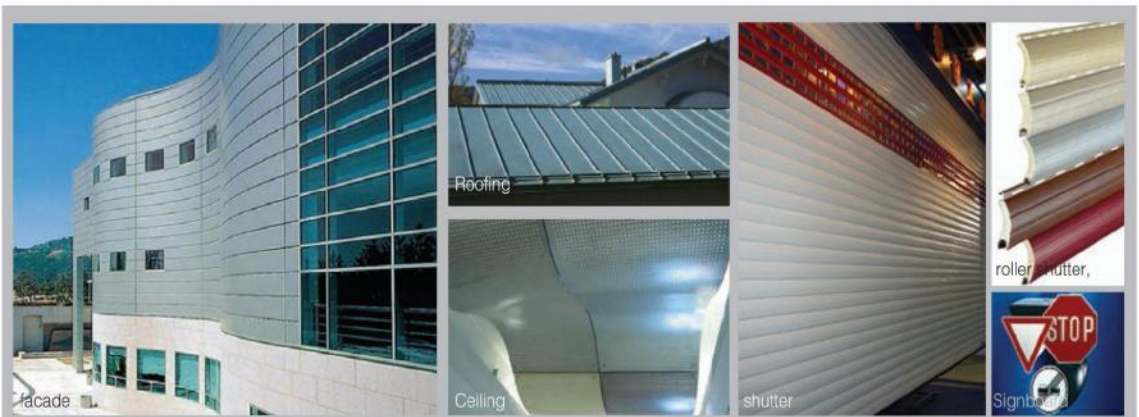


SPECIFICATION

- Substrates: Aluminium (AA1100, 3003, 3004, 3105, 5006, 5052, 8011 etc) PET, etc.
- Gauge range: Alu. 0.08 ~ 1,2mm.
- Width: <1800mm.
- Coating systems: Polyester, PVDF, Epoxy, Polyamide, Polyurethan etc.
- Further processing: Strips, Cut, Emboss and Packing.
- Colors & Finishes: Solid, Metallic, Stone- Wood, Look, Anti Graffiti, Anti Static, Anti Abrasion, Spectra, Wrinkle, etc.



TYPICAL APPLICATION



ALUMINIUM COMPOSITE PANEL

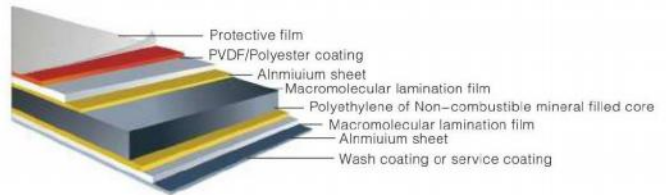
IDEABOND aluminium composite material consists of two pre-coated aluminium skins thermobonded to a polyethylene core. With excellent product properties, such as extraordinary flatness, large variety of colors, high strength-to-weight ratio, and perfect formability etc. IDEABOND was developed to provide a host of advantages for imaginative design and creativity in many applications.

IDEABOND FR aluminium composite material is composed of aluminium skins and the fire-retardant core (non-combustible mineral filled core). During the manufacturing process, the skins are thermally bonded to the core material in a continuous process, ensuring high strength, rigidity and workability. With its mineral-filled core material, IDEABOND FR has successfully established its approval in fire-performance tests.



CONSTITUTION STRUCTURE

- Protective film
- PVDF/Polyester coating
- Aluminium sheet
- Macromolecular lamination film
- Polyethylene or Non-combustible mineral filled core
- Macromolecular lamination film
- Aluminium sheet
- Wash coating or service coating



ITEMS	THICKNESS(mm)	ALU.THICKNESS(mm)	PANEL WIDTH(mm)	PANEL LENGTH(mm)
Standard	3,4	0.21,0.5	1220	2440
Options	5,6	0.12~0.6	900,1250,1500,1650	≤8000

FIRE BEHAVIOR

IDEABOND retards the rapid spread of fire through the non-inflammable aluminium cover sheets which protect the poly-ethylene core without toxicity.

IDEABOND FR is a fire-safe material with a flame-retardant mineral core to prevent the proliferation of flames and restrict the development of smoke detrimental to evacuation activities. It also meets the mandatory requirements for interior and exterior use in most countries, The following technical data is from the test report issued by SGS U.K.CO.,Ltd & SGS U.S. Testing Company Inc, respectively:

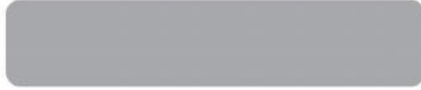
TESTING ITEMS	TEST CONDITION	RESULT	CONCLUSION	STANDARD
Fire safety test	BS 476:Part 6:1989	Total fire propagation index:0.05	Class 0	BS 476:Part 6:1989
Fire safety test	Relative Humidity of 50 ±10° F Temperature of 23 ±2° C	Flame spread at 1.5min:60mm Final flame spread:60mm	Class 1	BS 476:Part 7:1997
Fire safety test	Relative humidity of 50 ±5° F Temperature of 73 ±5° F	Flame spread index:10 Smoke developdd value:15	Class A	ASTM E-84-04

BS:British Standard; ASTM: American Society for Testing and Materials

For more details, please refer to a full set of IDEABOND data sheets or consult our nearest technical advisor for advice.



东元国际
INTDERNATIONAL



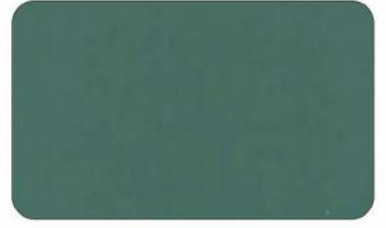
PVDF



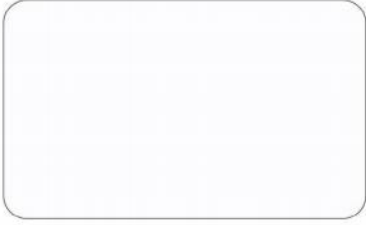
AF-406 Pure white



AF-421 Pale white



AF-410 Mouse grey



AF-404 Flat white



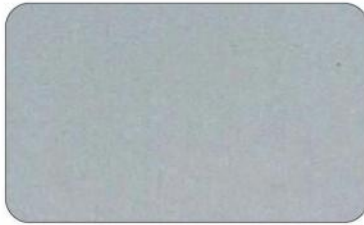
AF-402 Ivory white



AF-364 Blue metallic



AF-403 Silver metallic



AF-408 Silver



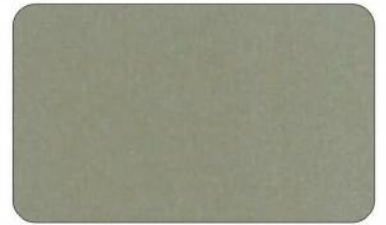
AF-411 Smoke silver



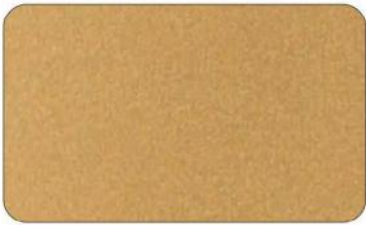
AF-405 Champagne metallic



AF-407 Champagne gold metallic



AF-425 Brown silver



AF-401 Gold metallic



AF-418 Brown copper metallic



AF-417 Coffee metallic



AF-416 Brown coffee



AF-400 Mouse gray metallic



AF-461 Black metallic



AF-370 Red



AF-360 Blue



AF-380 Orange

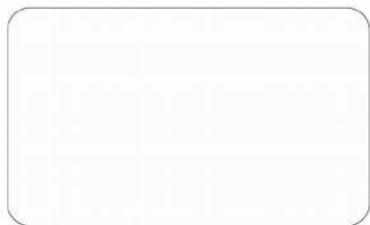
◆ Custom colors are available, upon the minimum order quantity request.



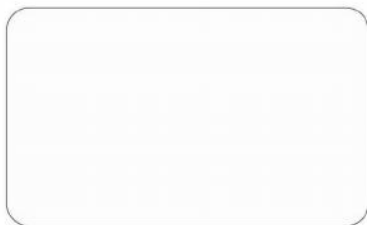
东元国际
INTDERNATIONAL



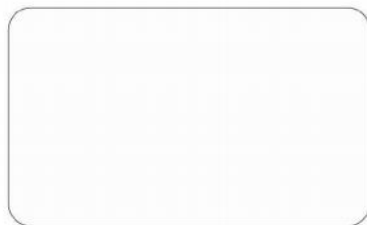
POLYESTER(PE)



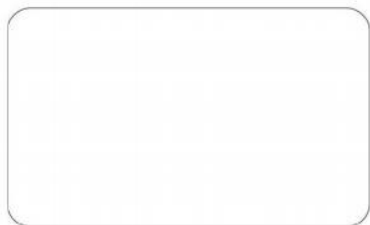
AE-31A Pure white



AE-31D Rice white



AE-32R Grey white



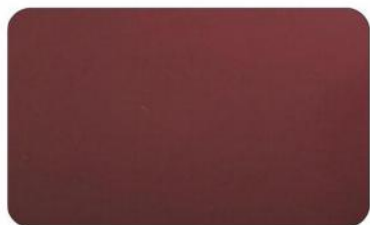
AE-31C Flat white



AE-31B Ivory white



AE-32C Mouse grey



AE-37E Rose red



AE-37B Brown red



AE-39A Black



AE-38C Salmon



AE-37C Mauve



AE-37A Red



AE-38A Pure yellow



AE-38B Advertising yellow



AE-38E Orange



AE-35F Grass green



AE-35A Verdure



AE-35B Green



AE-36A Light blue



AE-36C Post blue



AE-36B Dark blue

◆ The color may slightly vary between production lots, to ensure the color consistency. We recommend placing total requirement in one order.

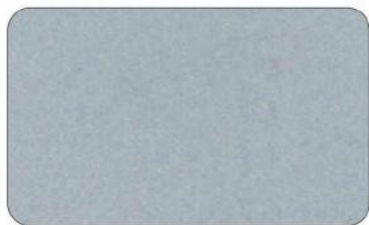


东元国际
INTDERNATIONAL

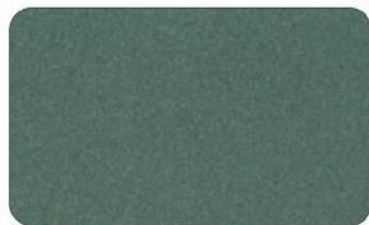
POLYESTER(PE)



AE-32D Silver metallic



AE-32E Silver



AE-32H Mouse gray metallic



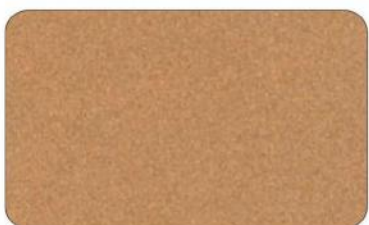
AE-32F Champagne silver metallic



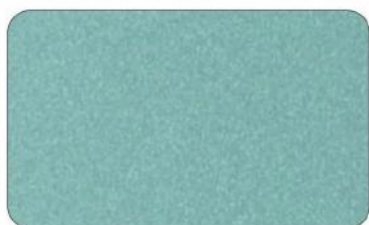
AE-32K Champagne gold metallic



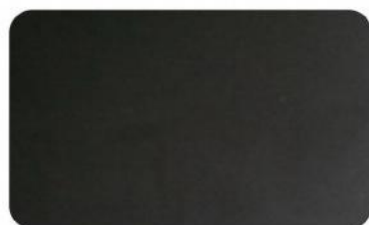
AE-33B Light gold metallic



AE-33A Brown copper metallic



AE-30A Jade metallic

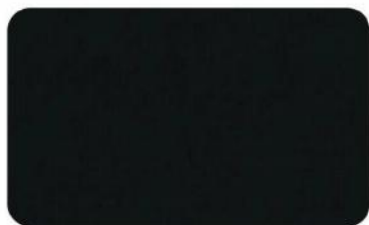


AE-39E Black metallic

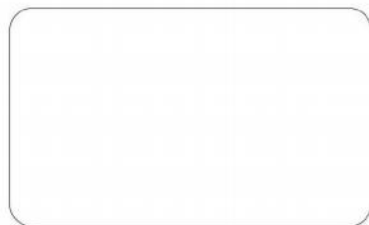
HIGH GLOSS



AE-101 High gloss red



AE-102 High gloss black



AE-103 High gloss white



AE-106 High gloss blue



AE-107 High gloss orange



AE-108 High gloss yellow

PEARL



AE-60A Pearl white



AE-60B Pearl yellow



AE-66A Pearl blue

SPECTRA



AS-915



AS-908

◆ This color chart is only for reference, please confirm the color with color sample.



东元国际
INTDERNATIONAL



MIRROR



AE-201 Silver mirror



AE-202 Gold mirror

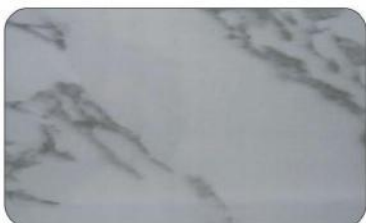


AE-206 Black mirror

STONE



AE-501



AE-504



AE-506



AE-507



AE-509



AE-510

WOOD



AE-301



AE-302



AE-303



AE-304



AE-305



AE-306

BRUSHED



LE-JA32A Silver brushed



LE-JA32B Gold brushed



LE-ZC32P Stainless steel brushed

TOUCH



LE-ZA39A Black brushed



TE-ZE306



TE-ZF33B

