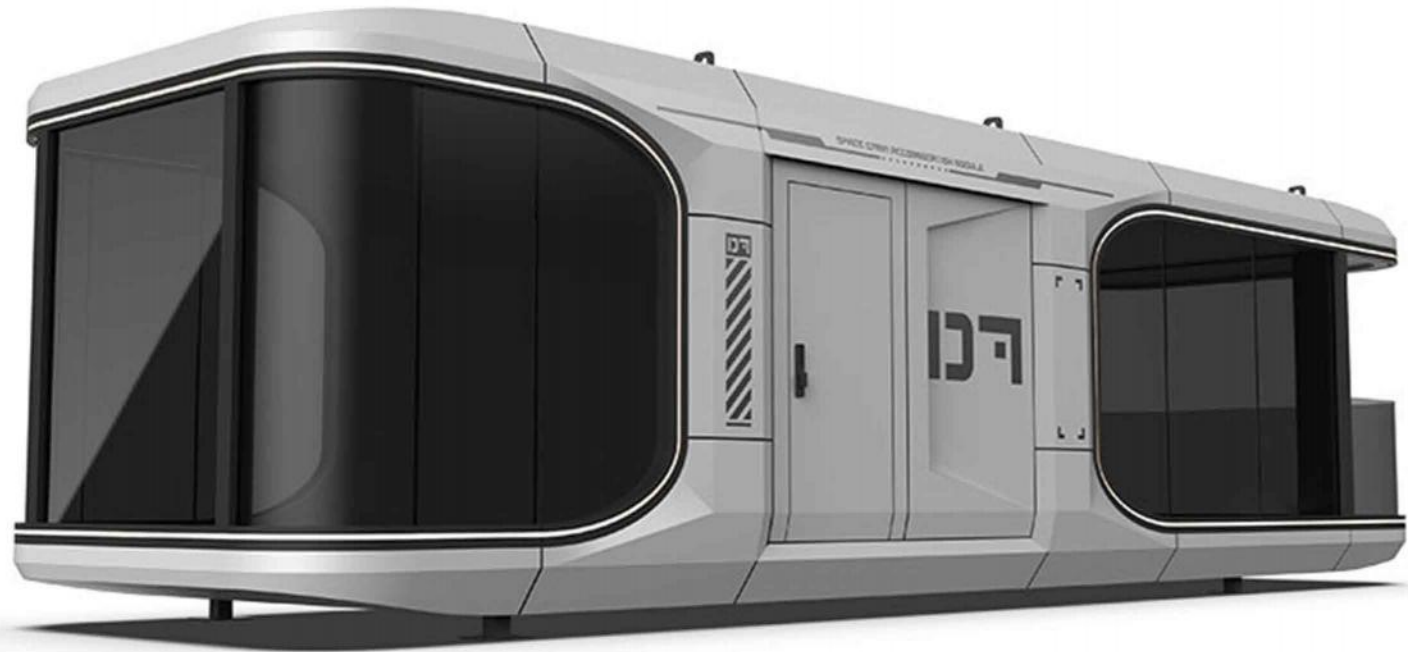


CONSTELLATION SPACE CAPSULE PRODUCT BROCHURE

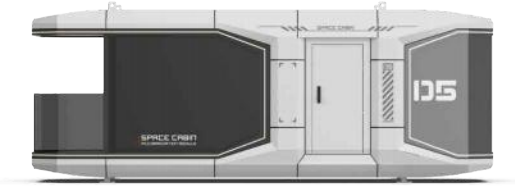
太空舱产品宣传册





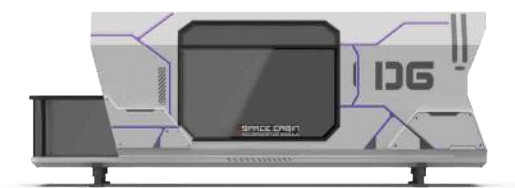
105

SPACE CAPSULE HOUSE



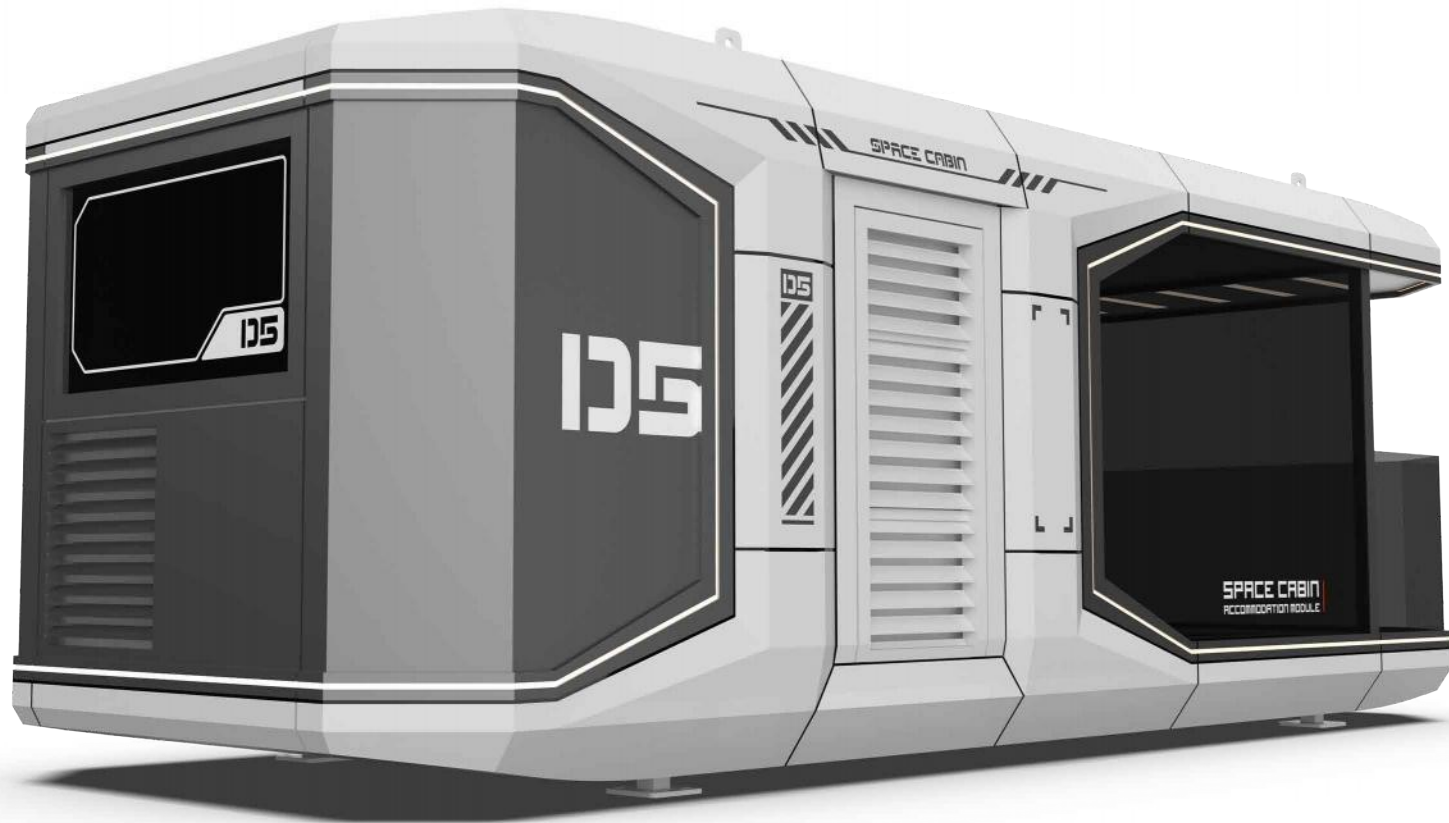
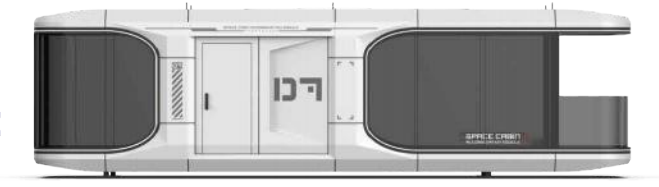
106

SPACE CAPSULE HOUSE



107

SPACE CAPSULE HOUSE



109

SPACE CAPSULE HOUSE



102

SPACE CAPSULE HOUSE



108

SPACE CAPSULE HOUSE



PRODUCT INTRODUCTION

产品介绍

DS

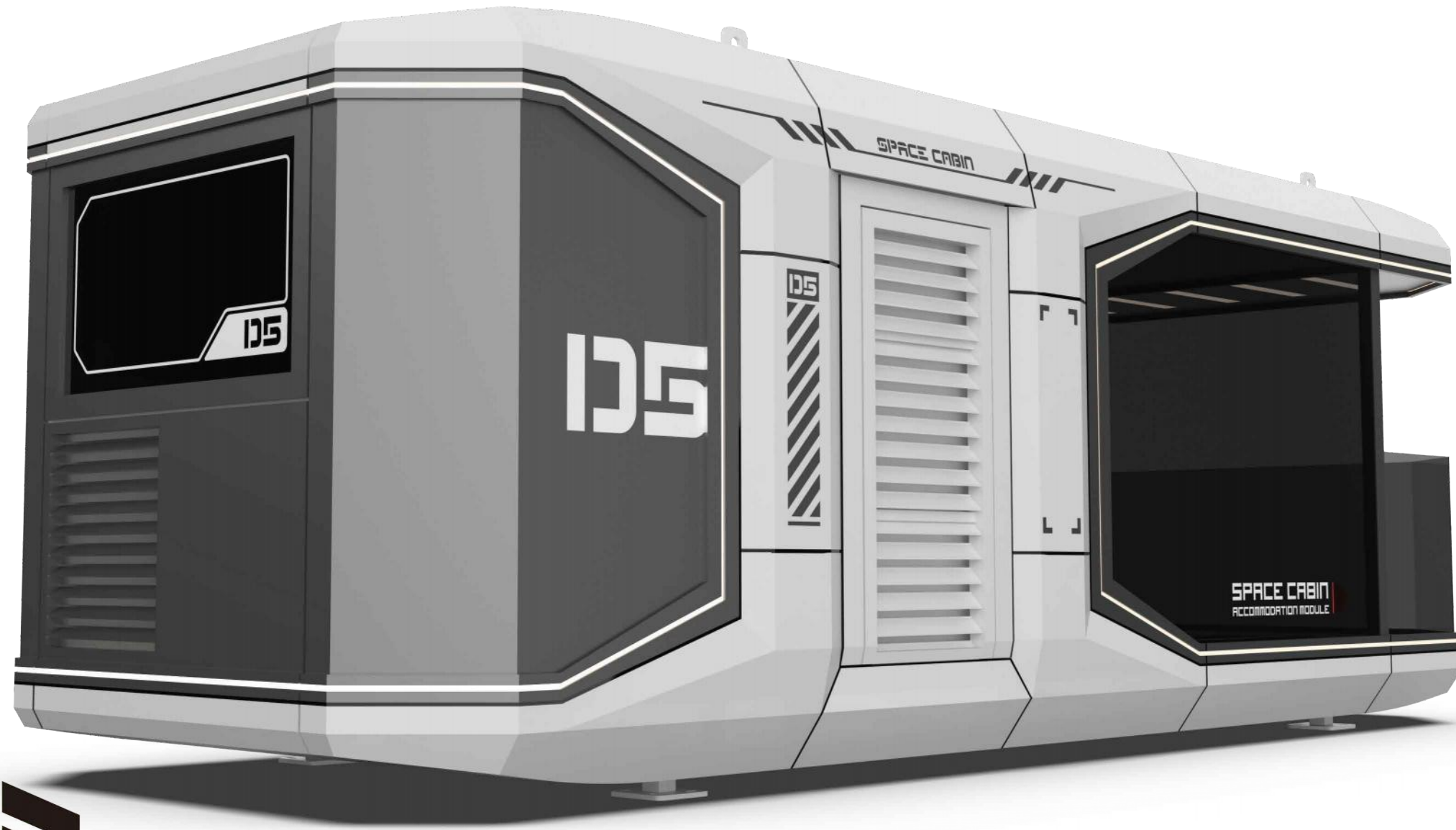
SPACE CABIN
ACCOMMODATION MODULE

SPACE CABIN

DS

PRODUCT PICTURE

产品主图



SPACE CABIN ACCOMMODATION MODULE





PRODUCT INTERIOR

产品内饰



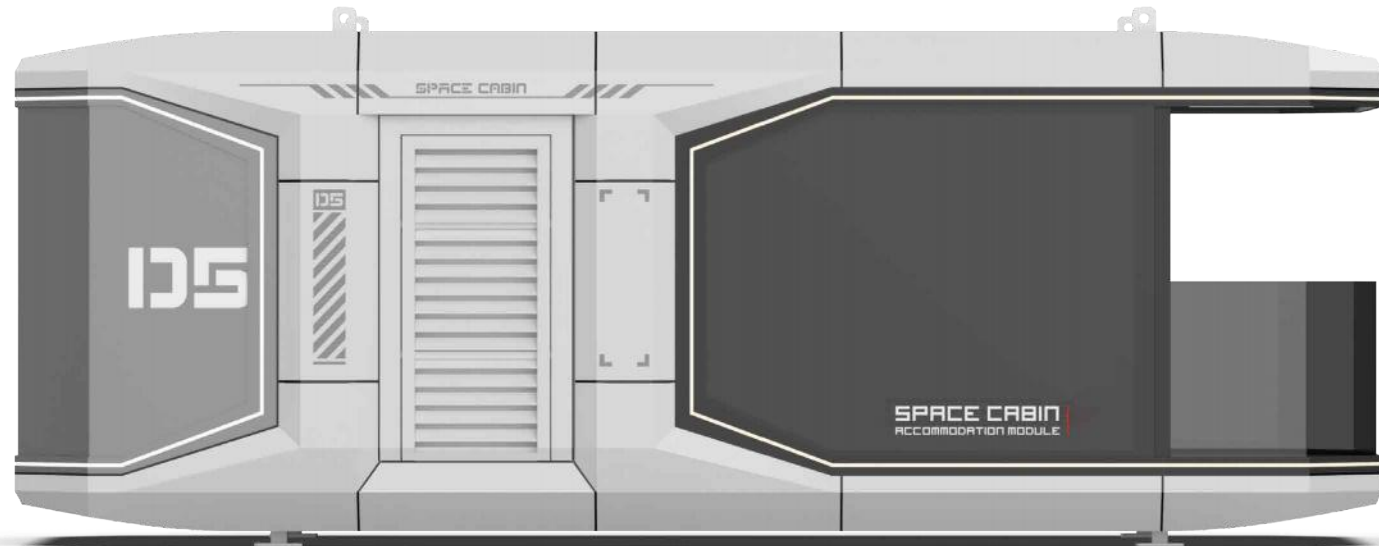
SPACE CABIN
ACCOMMODATION MODULE



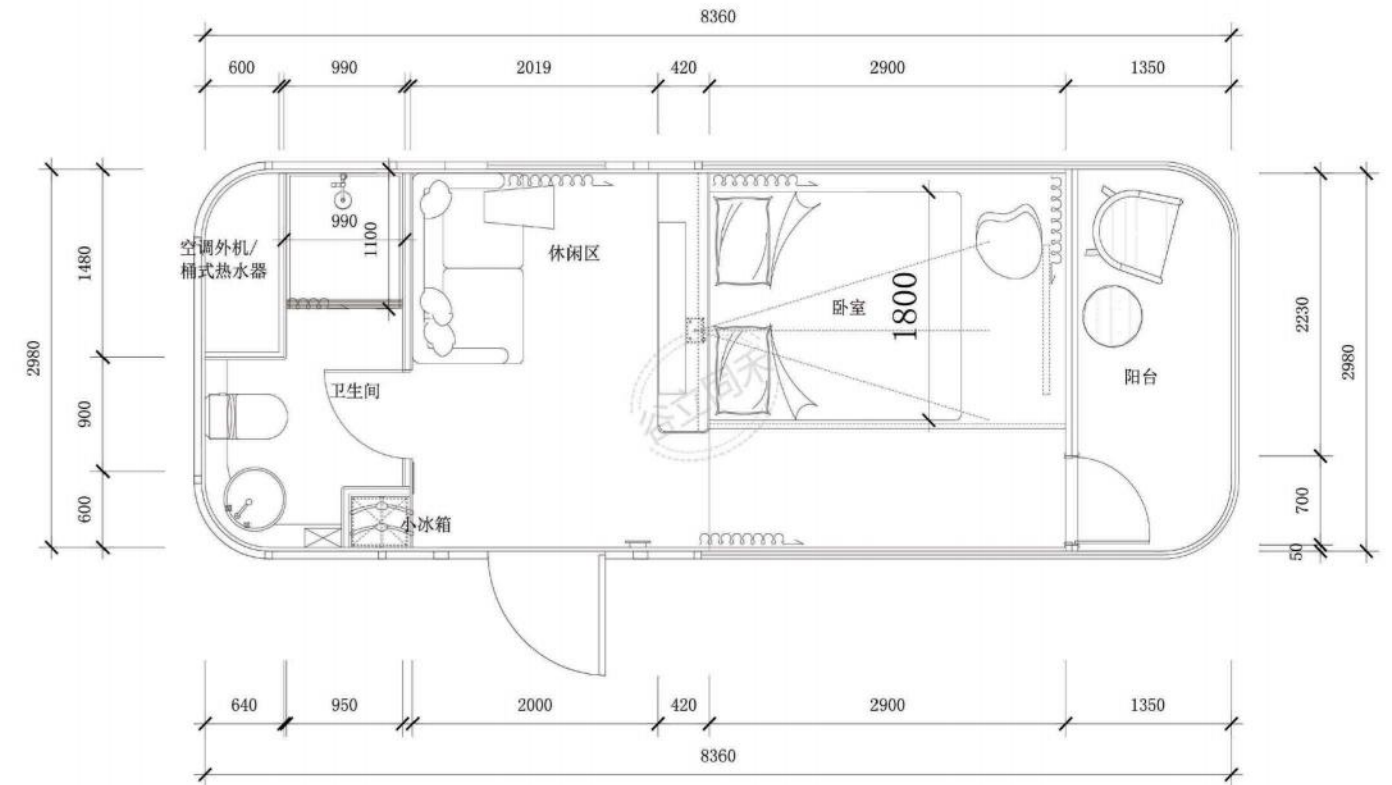
CONFIGURATION INSTRUCTIONS

配置说明

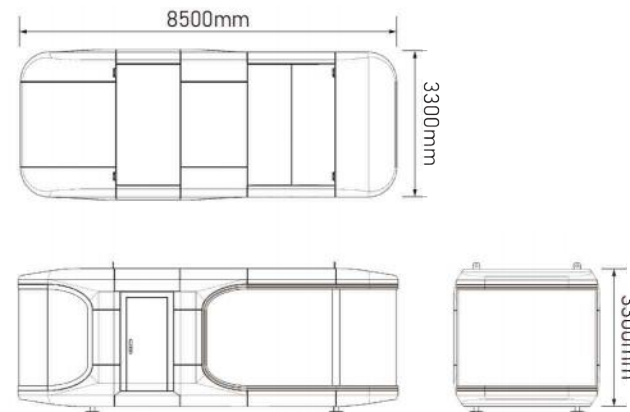
SPACE CABIN ACCOMMODATION MODULE



*以实物为准/Subject to The Actual Product



产品信息 (Configuration instructions)	
外形尺寸 Dimensions	8500mm*3300mm*3300mm
占地面积 Floor Area	28.4m ²
入住人数 Occupancy	2人
用电功率 Power consumption	12KW
约总重量 Approximate total weight	7吨



主体外结构 (Extracorporeal structure)		
No.	结构 (Structure)	材料 (Material)
1	钢结构框架 Steel structure frame	钢结构框架 Steel structure frame
2	外墙面板 Exterior wall panels	铝制 Aluminum
3	隔热保温 Heat insulation	100mm聚氨酯保温层 100mm polyurethane insulation layer
4	外墙玻璃 External wall glass	6+18A+6中空LOW-E玻璃或6+6夹胶断热玻璃 6+18A+6 hollow LOW-E glass or 6+6 amine insulating glass
5	外壳表面处理 Shell surface treatment	金属氟碳漆烤漆 Metal fluorocarbon paint baking paint
6	阳台 Balcony	全景阳台(10mm钢化玻璃) Panoramic balcony (10mm tempered glass)
7	外围灯带 Peripheral light strip	外围灯带(环绕氛围灯带) Peripheral light strip (surrounding ambient light strip)
8	入户门 Entrance door	智能门禁系统 Intelligent access control system

舱内环保精装修 (Eco-friendly fine decoration inside Structural materials)		
No.	结构 (Structure)	材料 (Material)
9	天花板 Ceiling	可饰面一体板 Can be decorated with integrated board
10	墙面 Wall surface	可饰面一体板 Can be decorated with integrated board
11	地面 Floor	高级木纹锁扣地板 High-grade wood grain lock floor
12	室内灯效 Indoor lighting effect	3000K暖黄光 3000K warm yellow light
13	室外灯效 Outdoor lighting effect	4000K暖白光 4000K warm white light
14	指控系统 Control system	全屋集成智控系统 The whole house integrated intelligent control system
15	插座面板 Socket panel	品牌开关面板 Brand switch panel

全屋设备 (Whole house equipment)		
No.	结构 (Structure)	材料 (Material)
16	空调 Air conditioner	风管机 Ducted air conditioner
17	浴霸 Yuba	风暖式三合一集成浴霸 Air-heated three-in-one integrated bathroom

卫浴五金(Bathroom Fittings)		
No.	结构 (Structure)	材料 (Material)
18	卫生间隐私门 Bathroom privacy door	磨砂钢化玻璃 Frosted tempered glass
19	挂衣架毛巾架 Hanger Towel Rack	挂衣架毛巾架 Hanger Towel Rack
20	花洒 Shower	50L桶式热水器 50L bucket water heater
21	台盆 Basin	台上盆 Above counter basin
22	马桶 Toilet	智能马桶 Smart toilet
23	水龙头 Faucet	高脚水龙头 Tall faucet

其他配件(Other Accessories)	
No.	结构 (Structure)
24	运输固定件/连接件 Shipping Fixtures/Connectors

选配配件(Optional accessories)	
No.	结构 (Structure)
25	窗帘 Curtain
26	电动窗帘 Electric curtain
27	插卡通电/取卡通电 Plug in card power/take card power
28	地暖: 电地暖 Floor heating: Electric floor heating
29	管道防冻: 电伴热 Pipeline antifreeze: electric heat tracing
30	影音设备: 投影仪 Audio-visual equipment: Projector
31	天窗 Skylight
32	循环换气系统 Circulation ventilation system
33	安全报警: 烟感 Security alarm: smoke
34	多情景模式功能面板 Multi-scene mode function panel
35	照明智能控制 Intelligent lighting control
36	窗帘智能控制 Intelligent curtain control
37	智能语音系统 Intelligent voice system
38	酒店链接系统 Hotel link system



SPACE CABIN ACCOMMODATION MODULE



SPACE CABIN ACCOMMODATION MODULE



PRODUCT INTRODUCTION

产品介绍

136

136

SPACE CABIN
ACCOMMODATION MODULE

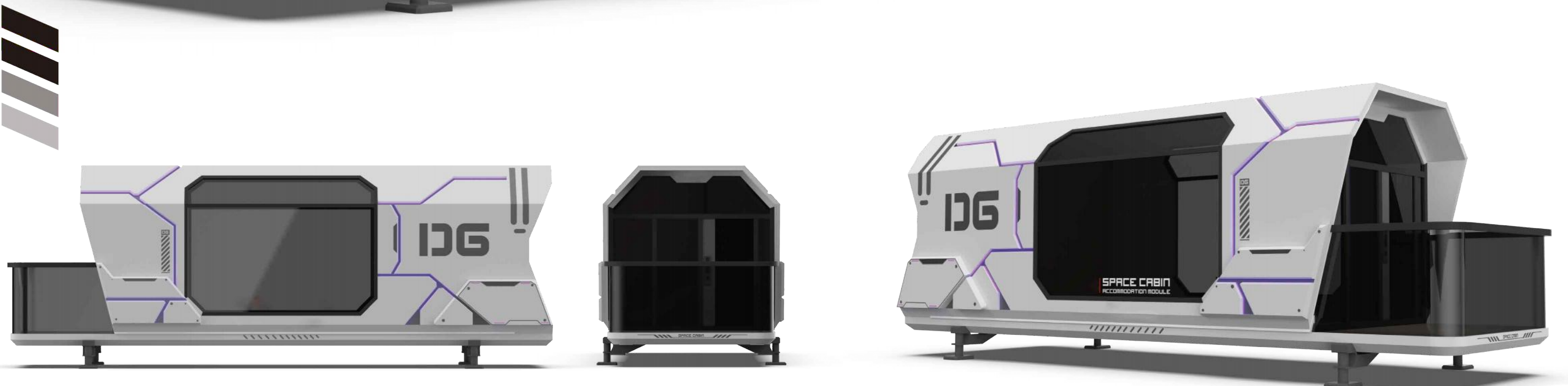
136

PRODUCT PICTURE

产品主图



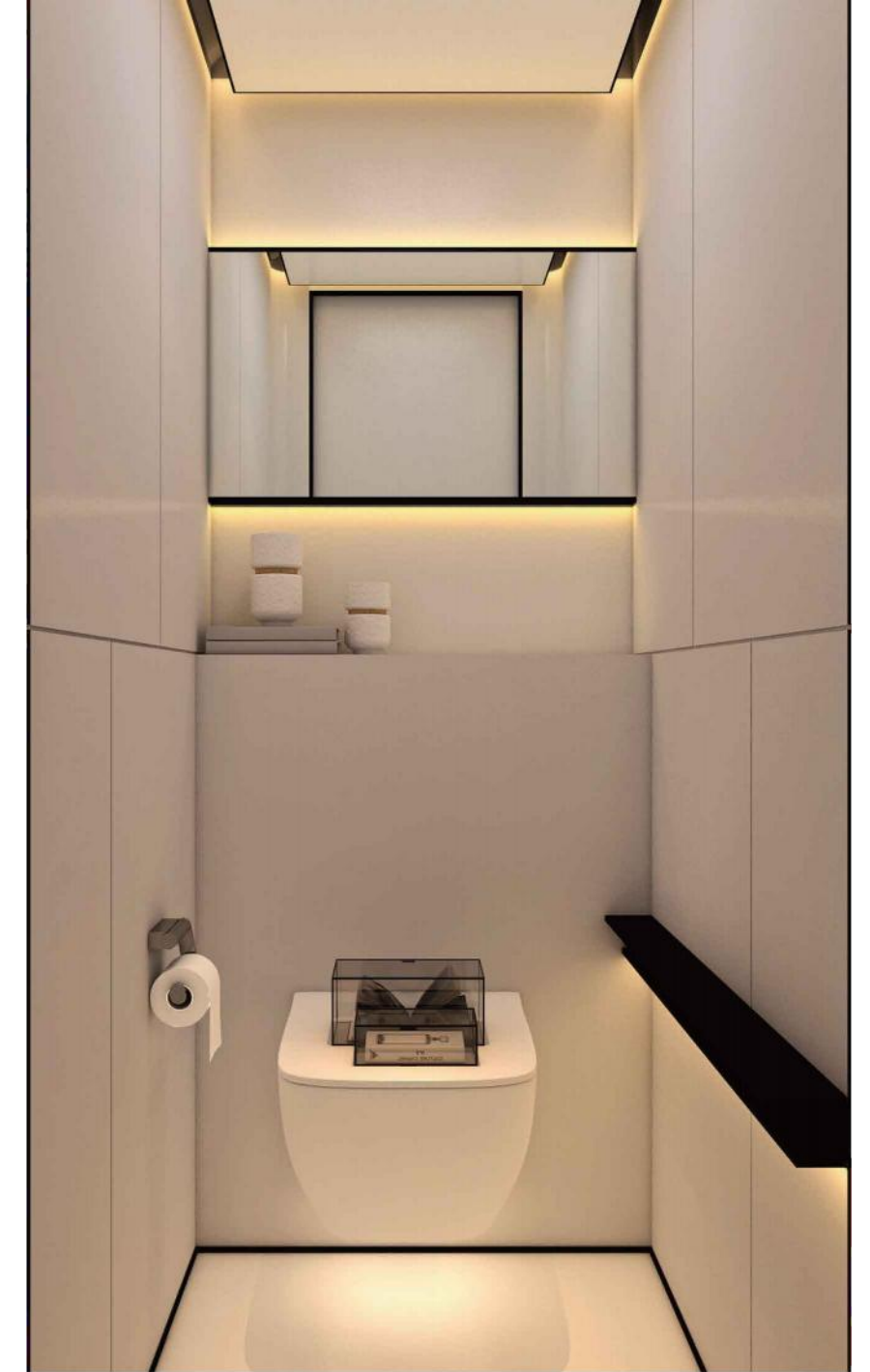
**SPACE CABIN
ACCOMMODATION
MODULE**





PRODUCT INTERIOR

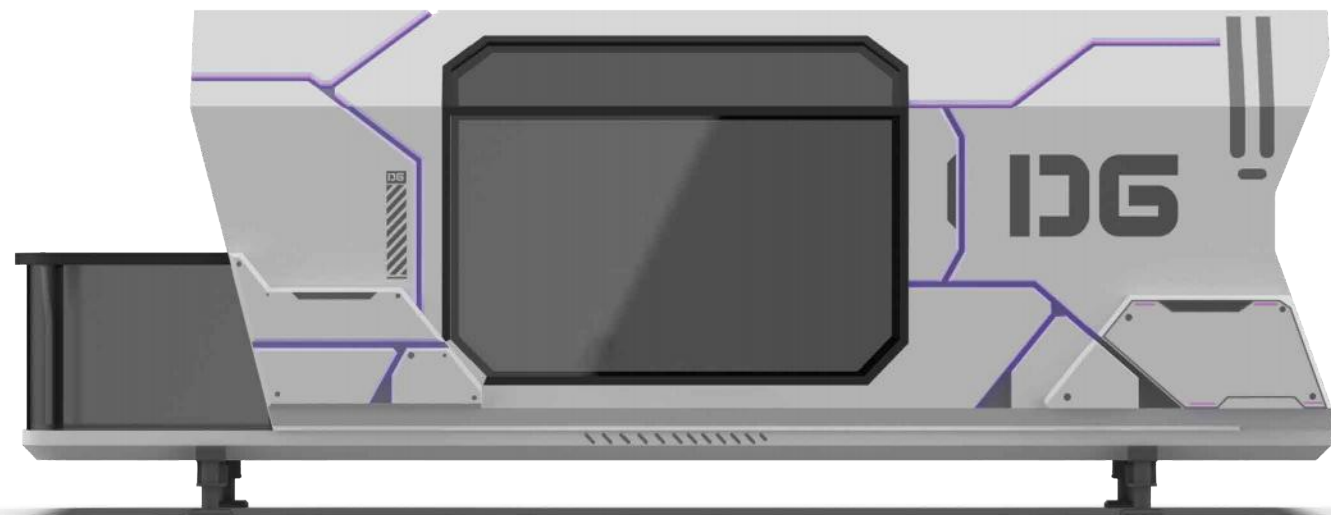
产品内饰



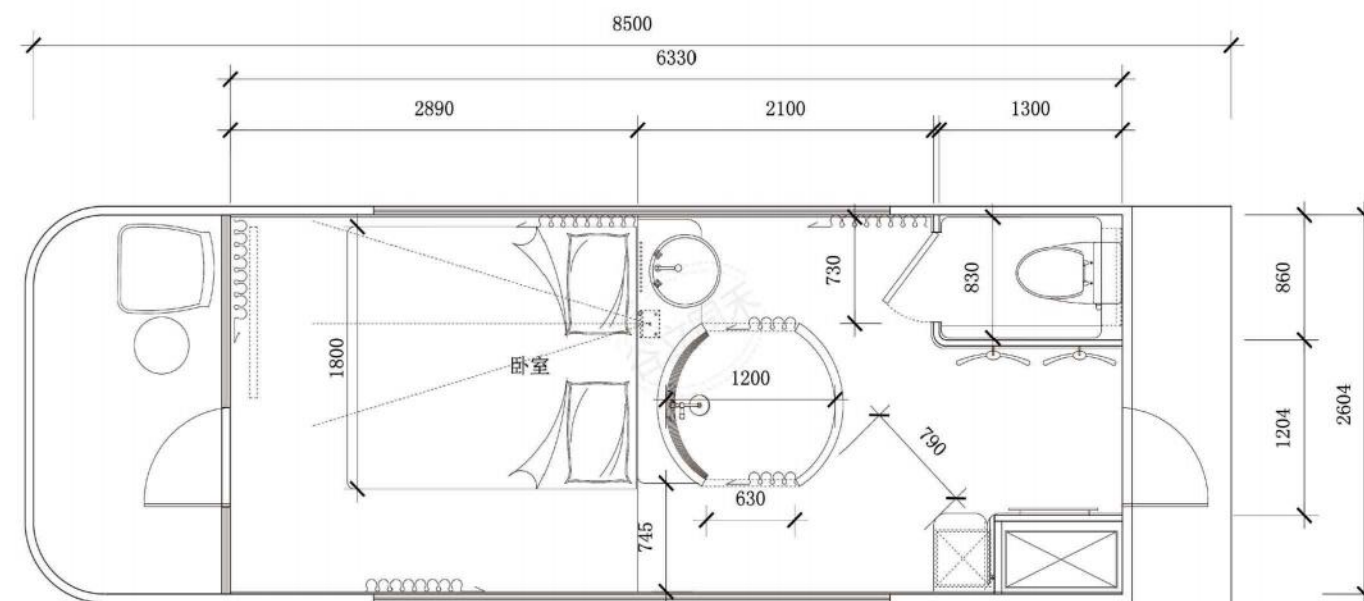
CONFIGURATION INSTRUCTIONS

配置说明

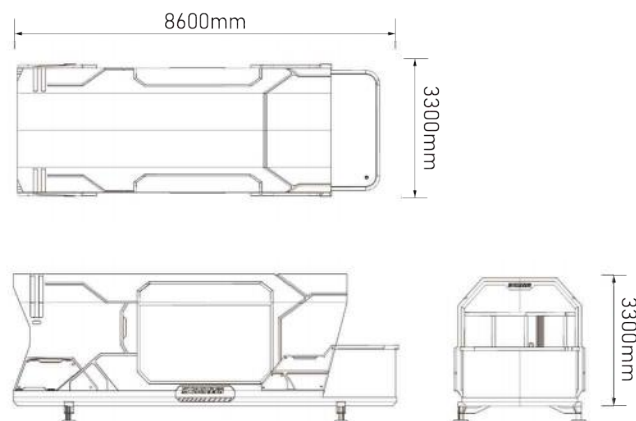
SPACE CABIN ACCOMMODATION MODULE



*以实物为准/Subject to The Actual Product



产品信息 (Configuration instructions)	
外形尺寸 Dimensions	8600mm*3300mm*3300mm
占地面积 Floor Area	28.4m ²
入住人数 Occupancy	2人
用电功率 Power consumption	12KW
约总重量 Approximate total weight	7吨



主体外结构 (Extracorporeal structure)		
No.	结构 (Structure)	材料 (Material)
1	钢结构框架 Steel structure frame	钢结构框架 Steel structure frame
2	外墙面板 Exterior wall panels	铝制 Aluminum
3	隔热保温 Heat insulation	100mm聚氨酯保温层 100mm polyurethane insulation layer
4	外墙玻璃 External wall glass	6+18A+6中空LOW-E玻璃或6+6夹胶断热玻璃 6+18A+6 hollow LOW-E glass or 6+6 amine insulating glass
5	外壳表面处理 Shell surface treatment	金属氟碳漆烤漆 Metal fluorocarbon paint baking paint
6	阳台 Balcony	全景阳台(10mm钢化玻璃) Panoramic balcony (10mm tempered glass)
7	外围灯带 Peripheral light strip	外围灯带(环绕氛围灯带) Peripheral light strip (surrounding ambient light strip)
8	入户门 Entrance door	智能门禁系统 Intelligent access control system

舱内环保精装修 (Eco-friendly fine decoration inside Structural materials)		
No.	结构 (Structure)	材料 (Material)
9	天花板 Ceiling	可饰面一体板 Can be decorated with integrated board
10	墙面 Wall surface	可饰面一体板 Can be decorated with integrated board
11	地面 Floor	高级木纹锁扣地板 High-grade wood grain lock floor
12	室内灯效 Indoor lighting effect	3000K暖黄光 3000K warm yellow light
13	室外灯效 Outdoor lighting effect	4000K暖白光 4000K warm white light
14	指控系统 Control system	全屋集成智控系统 The whole house integrated intelligent control system
15	插座面板 Socket panel	品牌开关面板 Brand switch panel

全屋设备 (Whole house equipment)		
No.	结构 (Structure)	材料 (Material)
16	空调 Air conditioner	风管机 Ducted air conditioner
17	浴霸 Yuba	风暖式三合一集成浴需 Air-heated three-in-one integrated bathroom

卫浴五金(Bathroom Fittings)		
No.	结构 (Structure)	材料 (Material)
18	卫生间隐私门 Bathroom privacy door	磨砂钢化玻璃 Frosted tempered glass
19	挂衣架毛巾架 Hanger Towel Rack	挂衣架毛巾架 Hanger Towel Rack
20	花洒 Shower	50L桶式热水器 50L bucket water heater
21	台盆 Basin	台上盆 Above counter basin
22	马桶 Toilet	智能马桶 Smart toilet
23	水龙头 Faucet	高脚水龙头 Tall faucet

其他配件(Other Accessories)	
No.	结构 (Structure)
24	运输固定件/连接件 Shipping Fixtures/Connectors

选配配件(Optional accessories)			
No.	结构 (Structure)	No.	结构 (Structure)
25	窗帘 Curtain	32	循环换气系统 Circulation ventilation system
26	电动窗帘 Electric curtain	33	安全报警:烟感 Security alarm: smoke
27	插卡通电/取卡通电 Plug in card power/take card power	34	多情景模式功能面板 Multi-scene mode function panel
28	地暖:电地暖 Floor heating: Electric floor heating	35	照明智能控制 Intelligent lighting control
29	管道防冻:电伴热 Pipeline antifreeze: electric heat tracing	36	窗帘智能控制 Intelligent curtain control
30	影音设备:投影仪 Audio-visual equipment: Projector	37	智能语音系统 Intelligent voice system
31	天窗 Skylight	38	酒店链接系统 Hotel link system



PRODUCT INTRODUCTION
IDG 场景效果图

SPACE CABIN ACCOMMODATION MODULE



PRODUCT INTRODUCTION

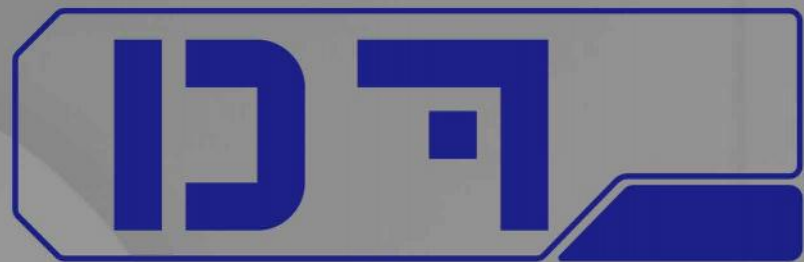
DG 场景效果图

SPACE CABIN ACCOMMODATION MODULE



PRODUCT INTRODUCTION

产品介绍



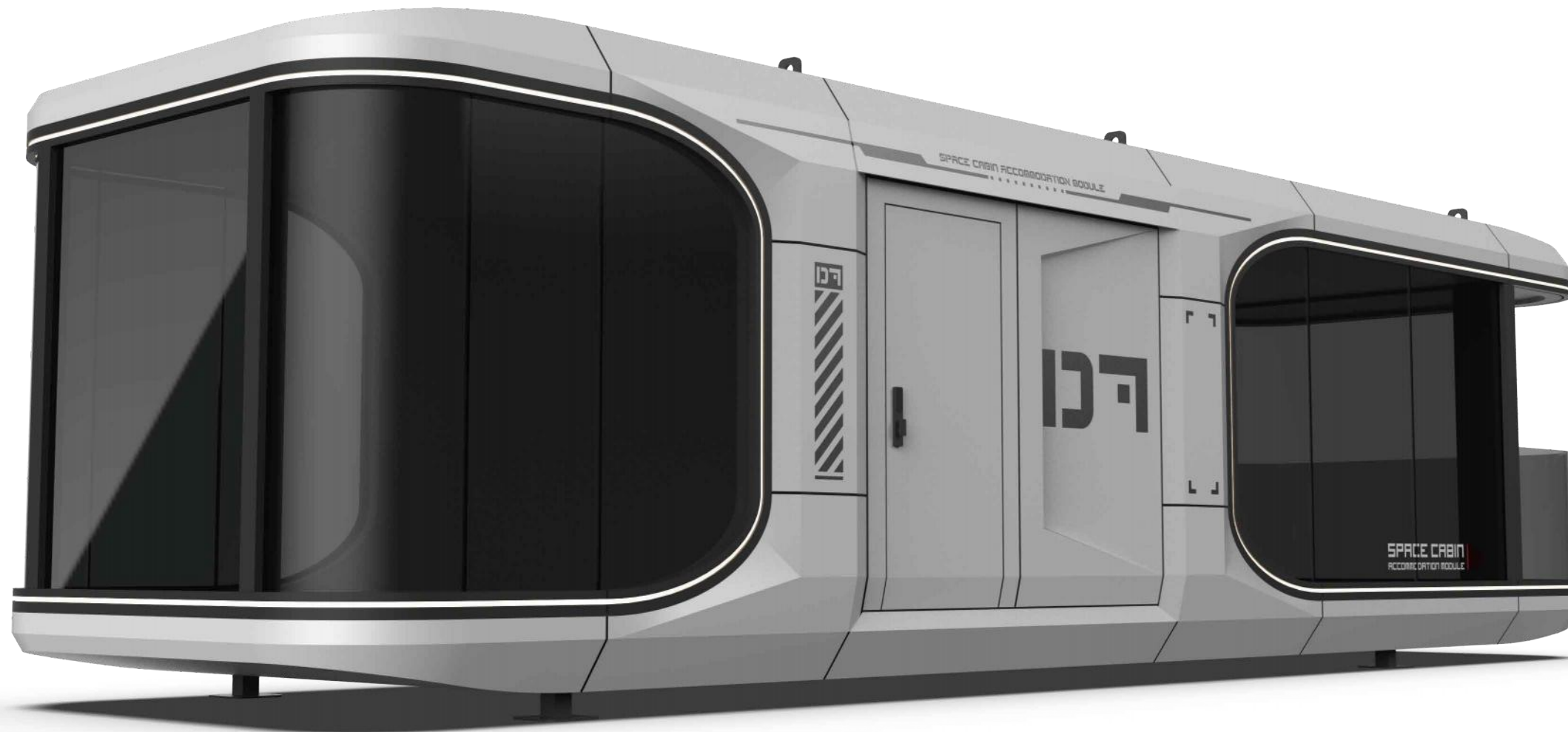
SPACE CABIN ACCOMMODATION MODULE

科 创

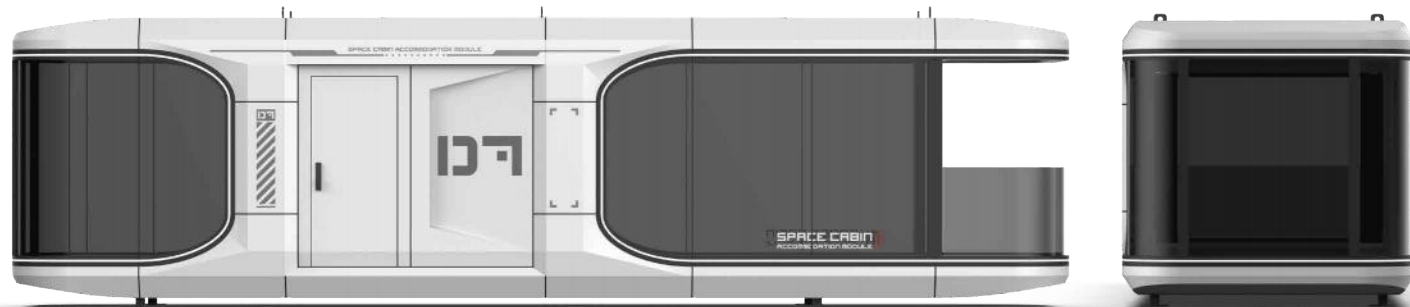
SPACE CABIN
ACCOMMODATION MODULE

PRODUCT PICTURE

产品主图



SPACE CABIN ACCOMMODATION MODULE



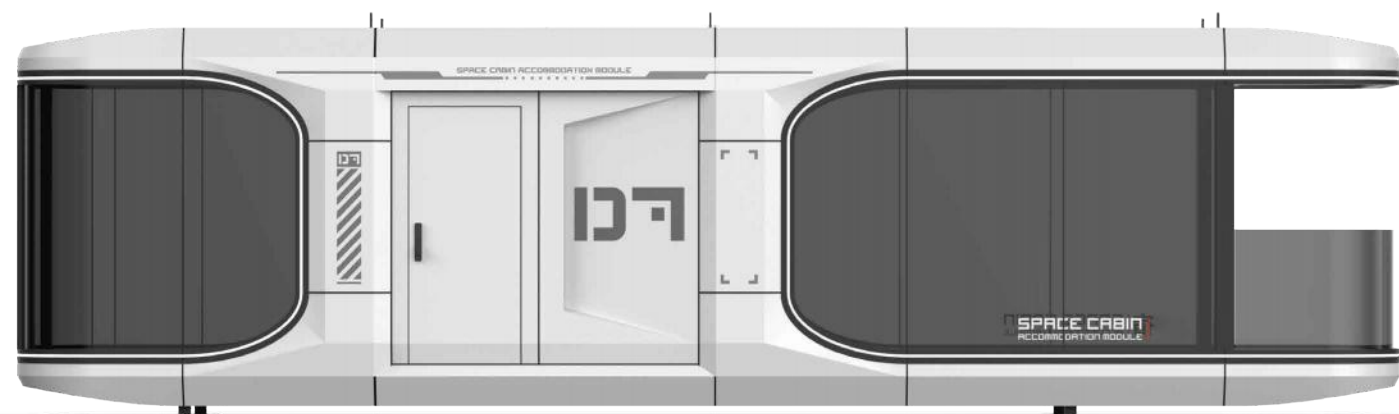




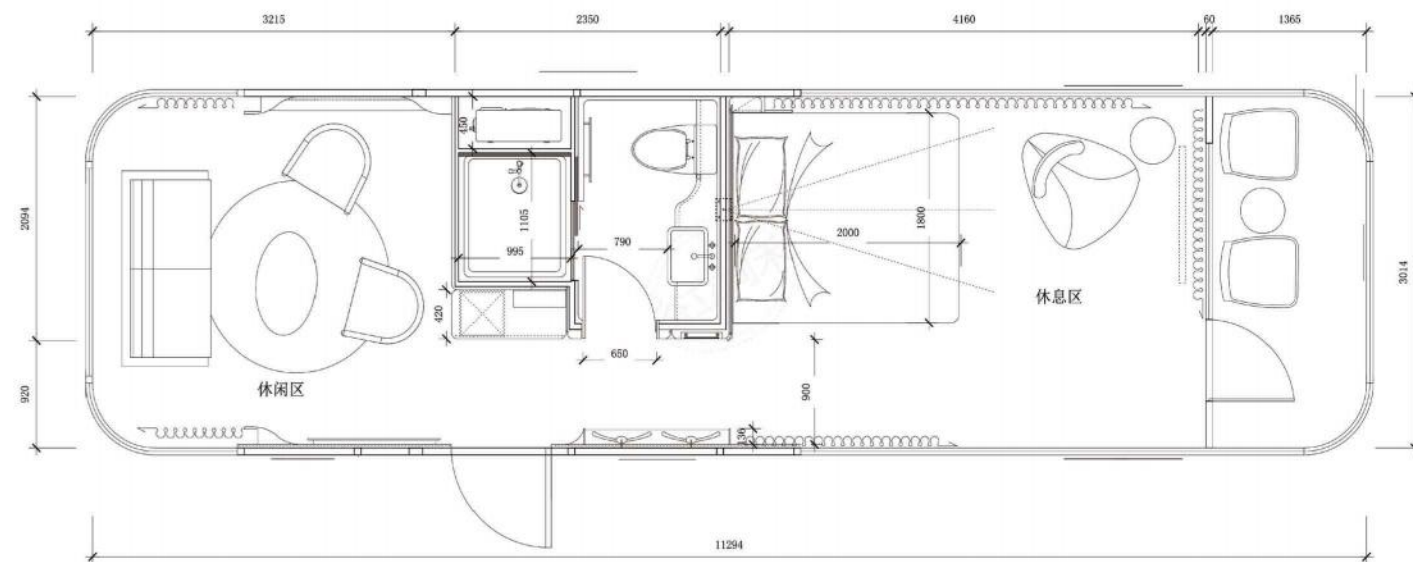
CONFIGURATION INSTRUCTIONS

配置说明

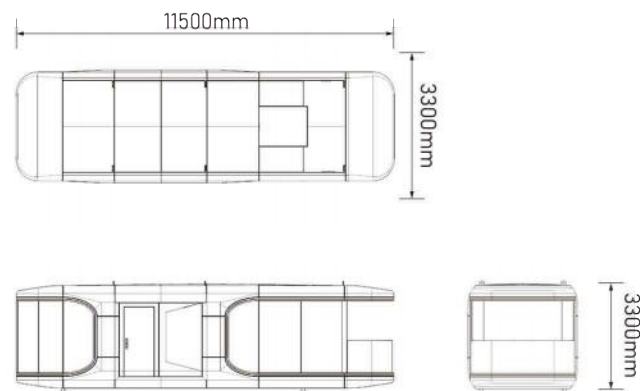
SPACE CABIN ACCOMMODATION MODULE



*以实物为准/Subject to The Actual Product



产品信息 (Configuration instructions)	
外形尺寸 Dimensions	11500mm*3300mm*3300mm
占地面积 Floor Area	38m ²
入住人数 Occupancy	2人
用电功率 Power consumption	12KW
约总重量 Approximate total weight	9吨



主体外结构 (Extracorporeal structure)		
No.	结构 (Structure)	材料 (Material)
1	钢结构框架 Steel structure frame	钢结构框架 Steel structure frame
2	外墙面板 Exterior wall panels	铝制 Aluminum
3	隔热保温 Heat insulation	100mm聚氨酯保温层 100mm polyurethane insulation layer
4	外墙玻璃 External wall glass	6+18A+6中空LOW-E玻璃或6+6夹胶断热玻璃 6+18A+6 hollow LOW-E glass or 6+6 amine insulating glass
5	外壳表面处理 Shell surface treatment	金属氟碳漆烤漆 Metal fluorocarbon paint baking paint
6	阳台 Balcony	全景阳台(10mm钢化玻璃) Panoramic balcony (10mm tempered glass)
7	外围灯带 Peripheral light strip	外围灯带(环绕氛围灯带) Peripheral light strip (surrounding ambient light strip)
8	入户门 Entrance door	智能门禁系统 Intelligent access control system

舱内环保精装修 (Eco-friendly fine decoration inside Structural materials)		
No.	结构 (Structure)	材料 (Material)
9	天花板 Ceiling	可饰面一体板 Can be decorated with integrated board
10	墙面 Wall surface	可饰面一体板 Can be decorated with integrated board
11	地面 Floor	高级木纹锁扣地板 High-grade wood grain lock floor
12	室内灯效 Indoor lighting effect	3000K暖黄光 3000K warm yellow light
13	室外灯效 Outdoor lighting effect	4000K暖白光 4000K warm white light
14	指控系统 Control system	全屋集成智控系统 The whole house integrated intelligent control system
15	插座面板 Socket panel	品牌开关面板 Brand switch panel

全屋设备 (Whole house equipment)		
No.	结构 (Structure)	材料 (Material)
16	空调 Air conditioner	风管机 Ducted air conditioner
17	浴霸 Yuba	风暖式三合一集成浴需 Air-heated three-in-one integrated bathroom

卫浴五金(Bathroom Fittings)

No.	结构(Structure)	材料(Material)
18	卫生间隐私门 Bathroom privacy door	磨砂钢化玻璃 Frosted tempered glass
19	挂衣架毛巾架 Hanger Towel Rack	挂衣架毛巾架 Hanger Towel Rack
20	花洒 Shower	50L桶式热水器 50L bucket water heater
21	台盆 Basin	台上盆 Above counter basin
22	马桶 Toilet	智能马桶 Smart toilet
23	水龙头 Faucet	高脚水龙头 Tall faucet

其他配件(Other Accessories)

No.	结构(Structure)
24	运输固定件/连接件 Shipping Fixtures/Connectors

选配配件(Optional accessories)

No.	结构(Structure)	No.	结构(Structure)
25	窗帘 Curtain	32	循环换气系统 Circulation ventilation system
26	电动窗帘 Electric curtain	33	安全报警:烟感 Security alarm: smoke
27	插卡通电/取卡通电 Plug in card power/take card power	34	多情景模式功能面板 Multi-scene mode function panel
28	地暖:电地暖 Floor heating: Electric floor heating	35	照明智能控制 Intelligent lighting control
29	管道防冻:电伴热 Pipeline antifreeze: electric heat tracing	36	窗帘智能控制 Intelligent curtain control
30	影音设备:投影仪 Audio-visual equipment: Projector	37	智能语音系统 Intelligent voice system
31	天窗 Skylight	38	酒店链接系统 Hotel link system



PRODUCT INTRODUCTION

177场景效果图

SPACE CABIN ACCOMMODATION MODULE



PRODUCT INTRODUCTION
产品场景效果图

SPACE CABIN ACCOMMODATION MODULE



PRODUCT INTRODUCTION

产品介绍

129

129

X-Inspace

Science fiction-like life

Technology inspiration Beyond time and space

Technology / Intelligent caravan

CAUTION



SPACE CABIN
TOURIST ACCOMMODATION

MOBILE CAPSULE RESIDENCE

PRODUCT PICTURE

产品主图



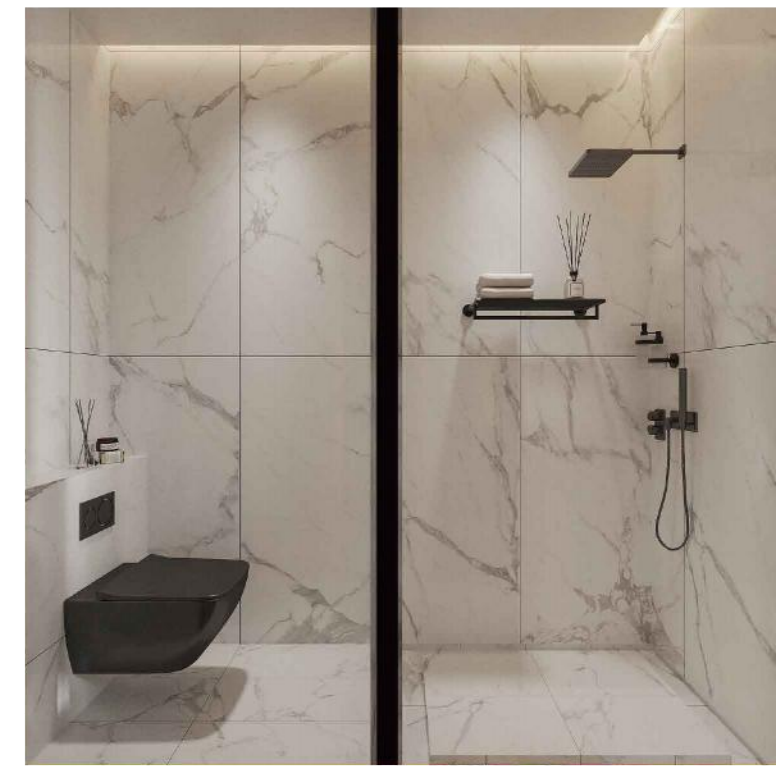
SPACE CABIN ACCOMMODATION MODULE





PRODUCT INTERIOR

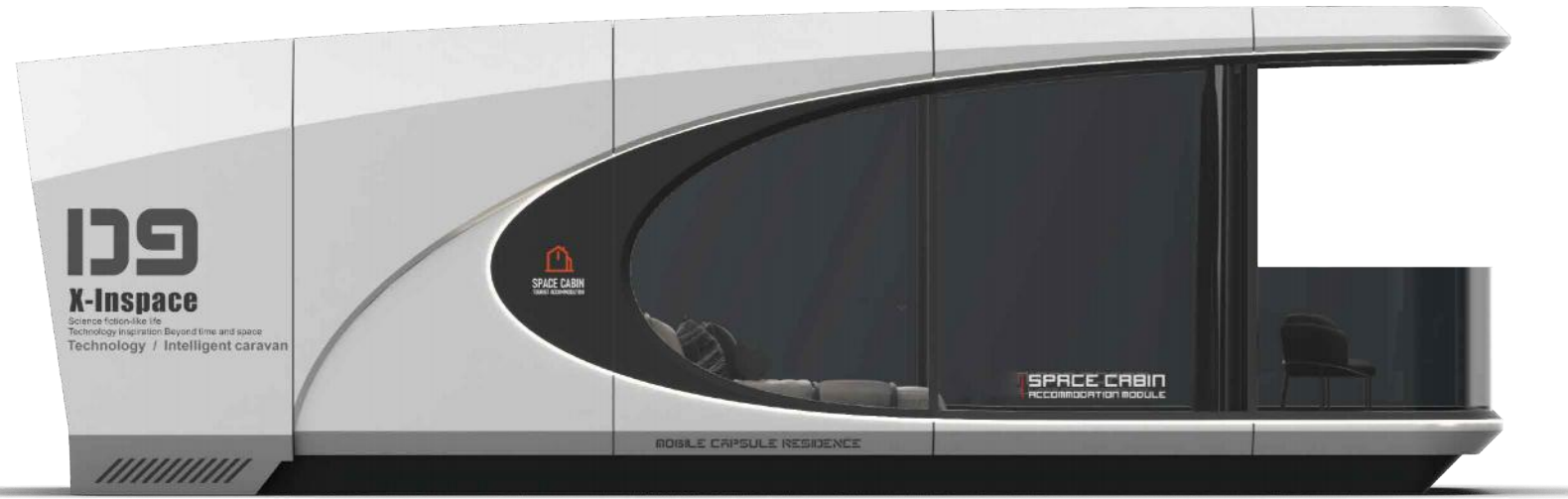
产品内饰



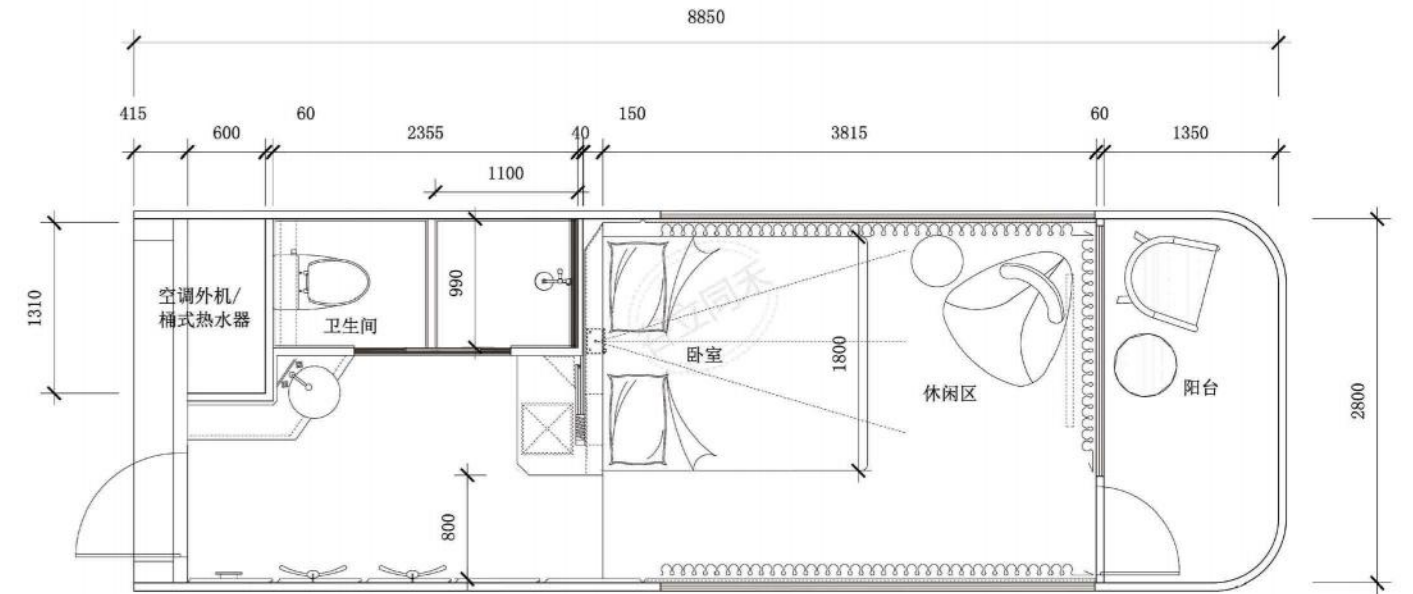
CONFIGURATION INSTRUCTIONS

配置说明

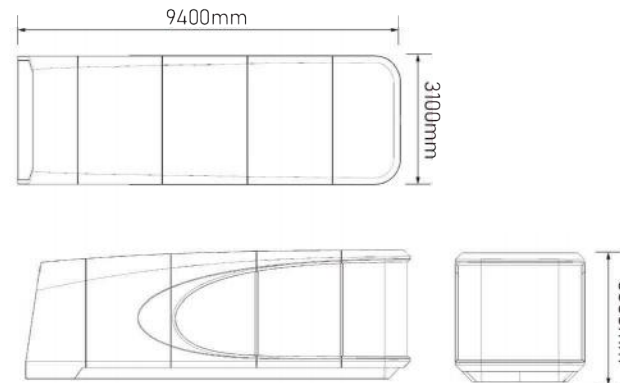
SPACE CABIN ACCOMMODATION MODULE



*以实物为准/Subject to The Actual Product



产品信息 (Configuration instructions)	
外形尺寸 Dimensions	9400mm*3100mm*3300mm
占地面积 Floor Area	29.7m ²
入住人数 Occupancy	2人
用电功率 Power consumption	12KW
约总重量 Approximate total weight	8吨



主体外结构 (Extracorporeal structure)		
No.	结构 (Structure)	材料 (Material)
1	钢结构框架 Steel structure frame	钢结构框架 Steel structure frame
2	外墙面板 Exterior wall panels	铝制 Aluminum
3	隔热保温 Heat insulation	100mm聚氨酯保温层 100mm polyurethane insulation layer
4	外墙玻璃 External wall glass	6+18A+6中空LOW-E玻璃或6+6夹胶断热玻璃 6+18A+6 hollow LOW-E glass or 6+6 amine insulating glass
5	外壳表面处理 Shell surface treatment	金属氟碳漆烤漆 Metal fluorocarbon paint baking paint
6	阳台 Balcony	全景阳台(10mm钢化玻璃) Panoramic balcony (10mm tempered glass)
7	外围灯带 Peripheral light strip	外围灯带(环绕氛围灯带) Peripheral light strip (surrounding ambient light strip)
8	入户门 Entrance door	智能门禁系统 Intelligent access control system

舱内环保精装修 (Eco-friendly fine decoration inside Structural materials)		
No.	结构 (Structure)	材料 (Material)
9	天花板 Ceiling	可饰面一体板 Can be decorated with integrated board
10	墙面 Wall surface	可饰面一体板 Can be decorated with integrated board
11	地面 Floor	高级木纹锁扣地板 High-grade wood grain lock floor
12	室内灯效 Indoor lighting effect	3000K暖黄光 3000K warm yellow light
13	室外灯效 Outdoor lighting effect	4000K暖白光 4000K warm white light
14	指控系统 Control system	全屋集成智控系统 The whole house integrated intelligent control system
15	插座面板 Socket panel	品牌开关面板 Brand switch panel

全屋设备 (Whole house equipment)		
No.	结构 (Structure)	材料 (Material)
16	空调 Air conditioner	风管机 Ducted air conditioner
17	浴霸 Yuba	风暖式三合一集成浴霸 Air-heated three-in-one integrated bathroom



其他配件(Other Accessories)

No.	结构 (Structure)
24	运输固定件/连接件 Shipping Fixtures/Connectors

选配配件(Optional accessories)

No.	结构 (Structure)	No.	结构 (Structure)
25	窗帘 Curtain	32	循环换气系统 Circulation ventilation system
26	电动窗帘 Electric curtain	33	安全报警:烟感 Security alarm: smoke
27	插卡通电/取卡通电 Plug in card power/take card power	34	多情景模式功能面板 Multi-scene mode function panel
28	地暖:电地暖 Floor heating: Electric floor heating	35	照明智能控制 Intelligent lighting control
29	管道防冻:电伴热 Pipeline antifreeze: electric heat tracing	36	窗帘智能控制 Intelligent curtain control
30	影音设备:投影仪 Audio-visual equipment: Projector	37	智能语音系统 Intelligent voice system
31	天窗 Skylight	38	酒店链接系统 Hotel link system

卫浴五金(Bathroom Fittings)

No.	结构 (Structure)	材料 (Material)
18	卫生间隐私门 Bathroom privacy door	磨砂钢化玻璃 Frosted tempered glass
19	挂衣架毛巾架 Hanger Towel Rack	挂衣架毛巾架 Hanger Towel Rack
20	花洒 Shower	50L桶式热水器 50L bucket water heater
21	台盆 Basin	台上盆 Above counter basin
22	马桶 Toilet	智能马桶 Smart toilet
23	水龙头 Faucet	高脚水龙头 Tall faucet

PRODUCT INTRODUCTION
19 场景效果图

SPACE CABIN ACCOMMODATION MODULE



SPACE CABIN
ACCOMMODATION MODULE

01
X-Inspace
Science fiction-like life
Technology Inspiration Beyond time and space
Technology Intelligent caravan

PRODUCT INTRODUCTION

SPACE CABIN ACCOMMODATION MODULE



SPACE CABIN
ACCOMMODATION MODULE

01

X-Inspace

Science fiction-like life
Technology Inspiration Beyond time and space
Technology / Intelligent caravan

SPACE CABIN

PRODUCT INTRODUCTION

产品介绍

12

12

SPACE CABIN
ACCOMMODATION MODULE

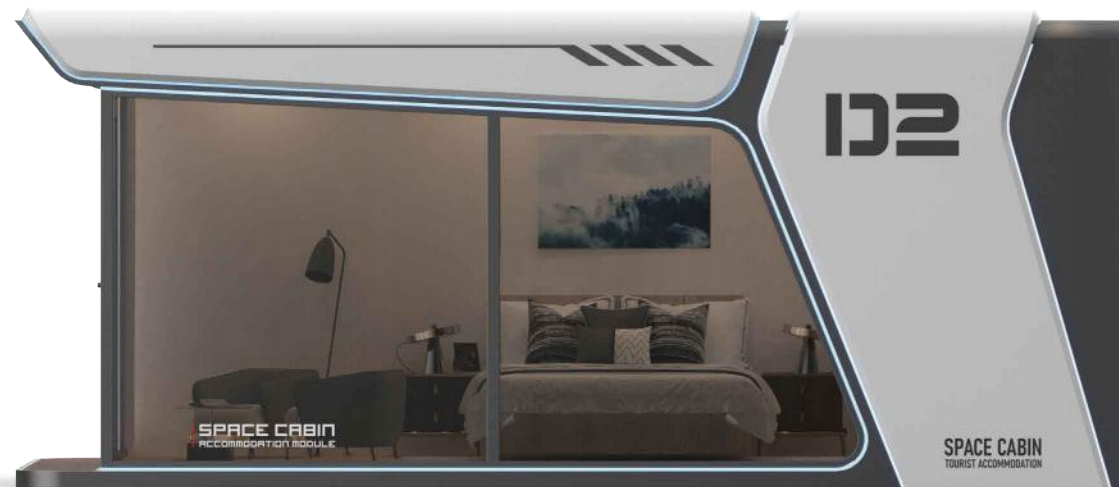
SPACE C
TOURIST ACCOM

PRODUCT PICTURE

产品主图



SPACE CABIN ACCOMMODATION MODULE



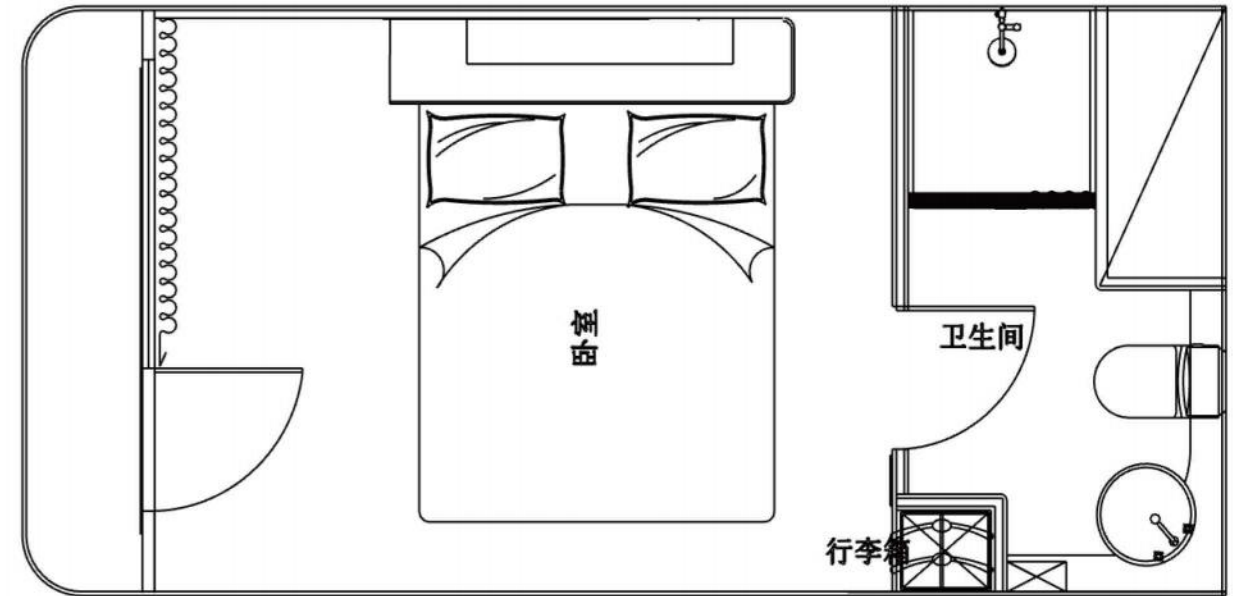
CONFIGURATION INSTRUCTIONS

配置说明

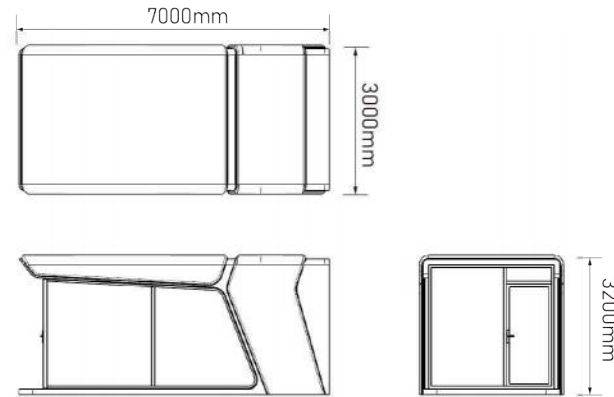
SPACE CABIN ACCOMMODATION MODULE



*以实物为准/Subject to The Actual Product



产品信息 (Configuration instructions)	
外形尺寸 Dimensions	7000mm*3000mm*3200mm
占地面积 Floor Area	22.4m ²
入住人数 Occupancy	2人
用电功率 Power consumption	12KW
约总重量 Approximate total weight	6吨



主体外结构 (Extracorporeal structure)		
No.	结构 (Structure)	材料 (Material)
1	钢结构框架 Steel structure frame	钢结构框架 Steel structure frame
2	外墙面板 Exterior wall panels	铝制 Aluminum
3	隔热保温 Heat insulation	100mm聚氨酯保温层 100mm polyurethane insulation layer
4	外墙玻璃 External wall glass	6+18A+6中空LOW-E玻璃或6+6夹胶断热玻璃 6+18A+6 hollow LOW-E glass or 6+6 amine insulating glass
5	外壳表面处理 Shell surface treatment	金属氟碳漆烤漆 Metal fluorocarbon paint baking paint
6	阳台 Balcony	全景阳台(10mm钢化玻璃) Panoramic balcony (10mm tempered glass)
7	外围灯带 Peripheral light strip	外围灯带(环绕氛围灯带) Peripheral light strip (surrounding ambient light strip)
8	入户门 Entrance door	智能门禁系统 Intelligent access control system

舱内环保精装修 (Eco-friendly fine decoration inside Structural materials)		
No.	结构 (Structure)	材料 (Material)
9	天花板 Ceiling	可饰面一体板 Can be decorated with integrated board
10	墙面 Wall surface	可饰面一体板 Can be decorated with integrated board
11	地面 Floor	高级木纹锁扣地板 High-grade wood grain lock floor
12	室内灯效 Indoor lighting effect	3000K暖黄光 3000K warm yellow light
13	室外灯效 Outdoor lighting effect	4000K暖白光 4000K warm white light
14	指控系统 Control system	全屋集成智控系统 The whole house integrated intelligent control system
15	插座面板 Socket panel	品牌开关面板 Brand switch panel

全屋设备 (Whole house equipment)		
No.	结构 (Structure)	材料 (Material)
16	空调 Air conditioner	风管机 Ducted air conditioner
17	浴霸 Yuba	风暖式三合一集成浴需 Air-heated three-in-one integrated bathroom

卫浴五金(Bathroom Fittings)

No.	结构 (Structure)	材料 (Material)
18	卫生间隐私门 Bathroom privacy door	磨砂钢化玻璃 Frosted tempered glass
19	挂衣架毛巾架 Hanger Towel Rack	挂衣架毛巾架 Hanger Towel Rack
20	花洒 Shower	50L桶式热水器 50L bucket water heater
21	台盆 Basin	台上盆 Above counter basin
22	马桶 Toilet	智能马桶 Smart toilet
23	水龙头 Faucet	高脚水龙头 Tall faucet

其他配件(Other Accessories)

No.	结构 (Structure)
24	运输固定件/连接件 Shipping Fixtures/Connectors

选配配件(Optional accessories)

No.	结构 (Structure)	No.	结构 (Structure)
25	窗帘 Curtain	32	循环换气系统 Circulation ventilation system
26	电动窗帘 Electric curtain	33	安全报警:烟感 Security alarm: smoke
27	插卡通电/取卡通电 Plug in card power/take card power	34	多情景模式功能面板 Multi-scene mode function panel
28	地暖:电地暖 Floor heating: Electric floor heating	35	照明智能控制 Intelligent lighting control
29	管道防冻:电伴热 Pipeline antifreeze: electric heat tracing	36	窗帘智能控制 Intelligent curtain control
30	影音设备:投影仪 Audio-visual equipment: Projector	37	智能语音系统 Intelligent voice system
31	天窗 Skylight	38	酒店链接系统 Hotel link system



PRODUCT INTRODUCTION

产品介绍

128

TRAVELER
ACCOMMODATION MODULE

128

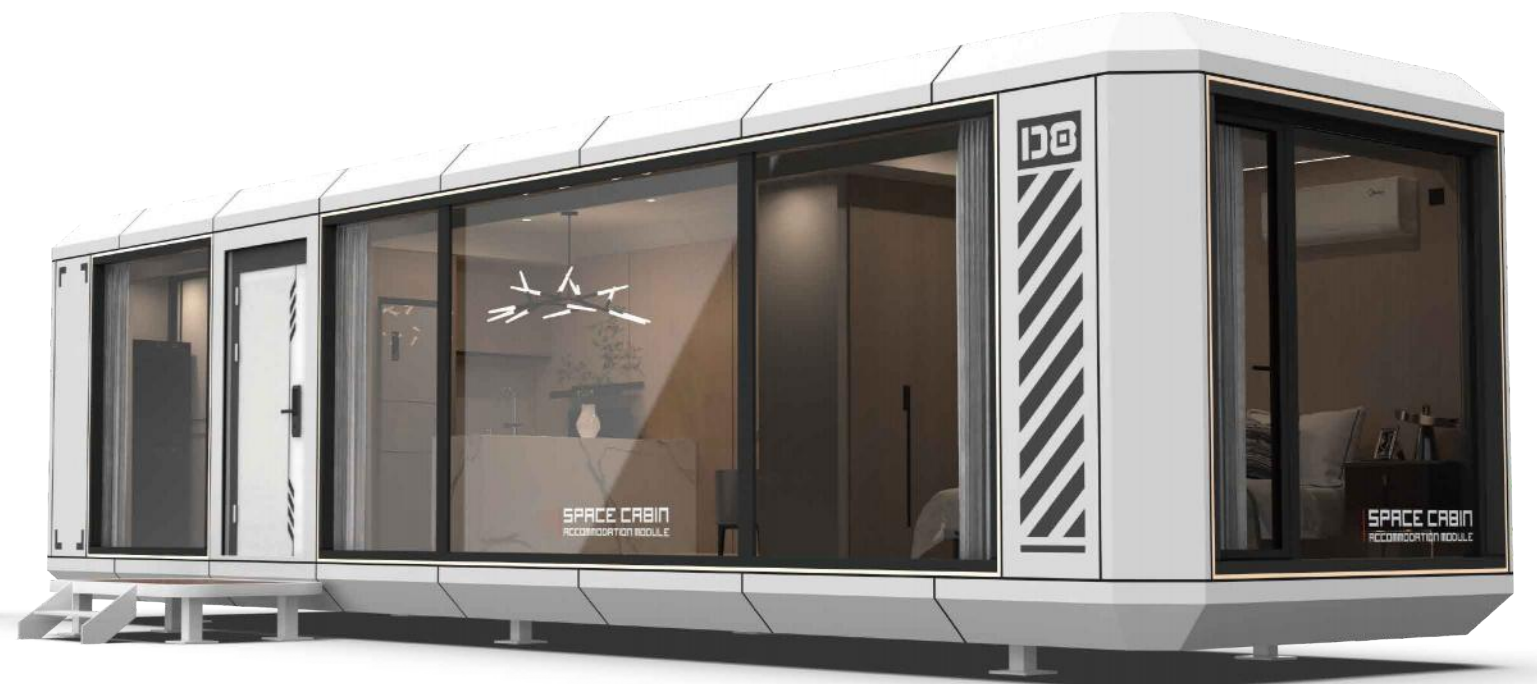
CABIN
INTRODUCTION

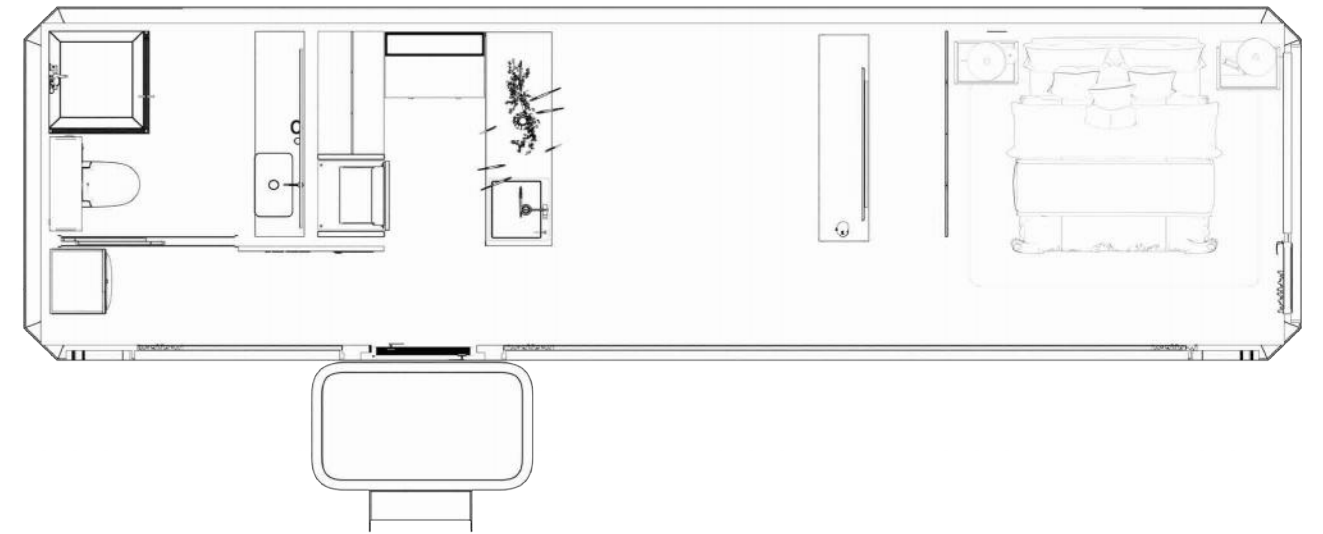
PRODUCT PICTURE

产品主图



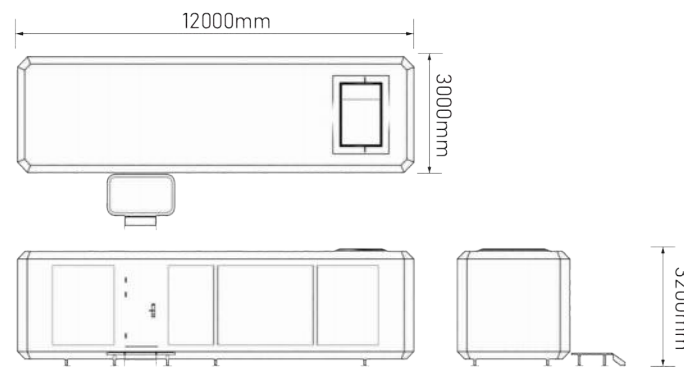
SPACE CABIN ACCOMMODATION MODULE





*以实物为准/Subject to The Actual Product

产品信息 (Configuration instructions)	
外形尺寸 Dimensions	12000mm*3000mm*3200mm
占地面积 Floor Area	29.7m ²
入住人数 Occupancy	2人
用电功率 Power consumption	12KW
约总重量 Approximate total weight	8吨



主体外结构 (Extracorporeal structure)		
No.	结构 (Structure)	材料 (Material)
1	钢结构框架 Steel structure frame	钢结构框架 Steel structure frame
2	外墙面板 Exterior wall panels	铝制 Aluminum
3	隔热保温 Heat insulation	100mm聚氨酯保温层 100mm polyurethane insulation layer
4	外墙玻璃 External wall glass	6+18A+6中空LOW-E玻璃或6+6夹胶断热玻璃 6+18A+6 hollow LOW-E glass or 6+6 amine insulating glass
5	外壳表面处理 Shell surface treatment	金属氟碳漆烤漆 Metal fluorocarbon paint baking paint
6	阳台 Balcony	全景阳台(10mm钢化玻璃) Panoramic balcony (10mm tempered glass)
7	外围灯带 Peripheral light strip	外围灯带(环绕氛围灯带) Peripheral light strip (surrounding ambient light strip)
8	入户门 Entrance door	智能门禁系统 Intelligent access control system

舱内环保精装修 (Eco-friendly fine decoration inside Structural materials)		
No.	结构 (Structure)	材料 (Material)
9	天花板 Ceiling	可饰面一体板 Can be decorated with integrated board
10	墙面 Wall surface	可饰面一体板 Can be decorated with integrated board
11	地面 Floor	高级木纹锁扣地板 High-grade wood grain lock floor
12	室内灯效 Indoor lighting effect	3000K暖黄光 3000K warm yellow light
13	室外灯效 Outdoor lighting effect	4000K暖白光 4000K warm white light
14	指控系统 Control system	全屋集成智控系统 The whole house integrated intelligent control system
15	插座面板 Socket panel	品牌开关面板 Brand switch panel

全屋设备 (Whole house equipment)		
No.	结构 (Structure)	材料 (Material)
16	空调 Air conditioner	风管机 Ducted air conditioner
17	浴霸 Yuba	风暖式三合一集成浴霸 Air-heated three-in-one integrated bathroom

卫浴五金(Bathroom Fittings)		
No.	结构 (Structure)	材料 (Material)
18	卫生间隐私门 Bathroom privacy door	磨砂钢化玻璃 Frosted tempered glass
19	挂衣架毛巾架 Hanger Towel Rack	挂衣架毛巾架 Hanger Towel Rack
20	花洒 Shower	50L桶式热水器 50L bucket water heater
21	台盆 Basin	台上盆 Above counter basin
22	马桶 Toilet	智能马桶 Smart toilet
23	水龙头 Faucet	高脚水龙头 Tall faucet

其他配件(Other Accessories)	
No.	结构 (Structure)
24	运输固定件/连接件 Shipping Fixtures/Connectors

选配配件(Optional accessories)			
No.	结构 (Structure)	No.	结构 (Structure)
25	窗帘 Curtain	32	循环换气系统 Circulation ventilation system
26	电动窗帘 Electric curtain	33	安全报警:烟感 Security alarm: smoke
27	插卡通电/取卡通电 Plug in card power/take card power	34	多情景模式功能面板 Multi-scene mode function panel
28	地暖:电地暖 Floor heating: Electric floor heating	35	照明智能控制 Intelligent lighting control
29	管道防冻:电伴热 Pipeline antifreeze: electric heat tracing	36	窗帘智能控制 Intelligent curtain control
30	影音设备:投影仪 Audio-visual equipment: Projector	37	智能语音系统 Intelligent voice system
31	天窗 Skylight	38	酒店链接系统 Hotel link system

